

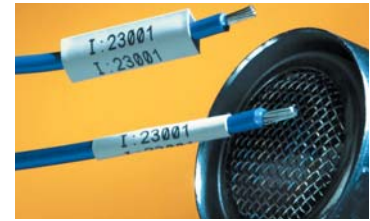
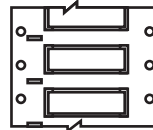
# BBP®12 Small Core Materials

BradyID.com

## B-342 PermaSleeve® PS Polyolefin Wire Marking Sleeves

B-342 PermaSleeve® PS Polyolefin Wire Marking Sleeves are a 3:1 heat shrinkable wire marking sleeve that fits snugly around wires for identification and protection. These fade-resistant and flame retardant sleeves meet the following insulating material and physical property specifications:

- SAE-AMS-DTL-23053/5C (Class 1)
  - SAE-AS-81531
  - MIL-STD-202
  - RoHS Compliant
  - UL Recognized
- Tested per:**
- ASTM E162
  - ASTM E662



**Understanding PermaSleeve Parts:**

Example:  
**PS - 187 - 2 - WT - SC**

Product	Diameter	Width	Color*	Small Core for BBP12	2 Pieces** (Optional)
---------	----------	-------	--------	----------------------	-----------------------

Catalog	Sleeves Per Roll	Approx. Wire Gauge	Range of Wire Dia. Inch (mm) Min. Max.	Supplied Dia. Inch (mm)	Recovered Dia. Inch (mm)	Recovered Wall Thickness Inch (mm)	Sleeve Width Inch (mm)	Rec. Printer	Rec. Ribbon
<b>BBP12 1" Small Core, Single-Sided Printable, 2" Width</b>									
PS-094-2-WT-SC	1,000	28 to 20	0.023 (0.6) - 0.080 (2.0)	0.094 (2.4)	0.024 (0.6)	.024 (0.6) ± .003 (0.07)	2.000 (50.8)	BBP12	R4313/ R6613
PS-094-2-YL-SC	1,000	28 to 20	0.023 (0.6) - 0.080 (2.0)	0.094 (2.4)	0.024 (0.6)	.024 (0.6) ± .003 (0.07)	2.000 (50.8)	BBP12	R4313/ R6613
PS-125-2-WT-SC	1,000	22 to 16	0.046 (1.2) - 0.110 (2.8)	0.125 (3.2)	0.047 (1.2)	.020 (0.5) ± .003 (0.07)	2.000 (50.8)	BBP12	R4313/ R6613
PS-125-2-YL-SC	1,000	22 to 16	0.046 (1.2) - 0.110 (2.8)	0.125 (3.2)	0.047 (1.2)	.020 (0.5) ± .003 (0.07)	2.000 (50.8)	BBP12	R4313/ R6613
PS-187-2-WT-SC	1,000	20 to 10	0.062 (1.6) - 0.150 (3.8)	0.187 (4.7)	0.062 (1.6)	.020 (0.5) ± .003 (0.07)	2.000 (50.8)	BBP12	R4313/ R6613
PS-187-2-YL-SC	1,000	20 to 10	0.062 (1.6) - 0.150 (3.8)	0.187 (4.7)	0.062 (1.6)	.020 (0.5) ± .003 (0.07)	2.000 (50.8)	BBP12	R4313/ R6613
PS-250-2-WT-SC	500	16 to 8	0.094 (2.4) - 0.215 (5.5)	0.250 (6.4)	0.093 (2.4)	.025 (0.6) ± .003 (0.07)	2.000 (50.8)	BBP12	R4313/ R6613
PS-250-2-YL-SC	500	16 to 8	0.094 (2.4) - 0.215 (5.5)	0.250 (6.4)	0.093 (2.4)	.025 (0.6) ± .003 (0.07)	2.000 (50.8)	BBP12	R4313/ R6613
PS-375-2-WT-SC	250	12 to 4	0.125 (3.2) - 0.320 (8.13)	0.375 (9.5)	0.125 (3.1)	.025 (0.6) ± .003 (0.07)	2.000 (50.8)	BBP12	R4313/ R6613
PS-375-2-YL-SC	250	12 to 4	0.125 (3.2) - 0.320 (8.13)	0.375 (9.5)	0.125 (3.1)	.025 (0.6) ± .003 (0.07)	2.000 (50.8)	BBP12	R4313/ R6613
PS-500-2-WT-SC	250	8 to 1	0.187 (4.8) - 0.450 (11.4)	0.500 (12.7)	0.187 (4.7)	.025 (0.6) ± .003 (0.07)	2.000 (50.8)	BBP12	R4313/ R6613
PS-500-2-YL-SC	250	8 to 1	0.187 (4.8) - 0.450 (11.4)	0.500 (12.7)	0.187 (4.7)	.025 (0.6) ± .003 (0.07)	2.000 (50.8)	BBP12	R4313/ R6613
PS-750-2-WT-SC	100	6 to 4/0	0.250 (6.6) - 0.700 (17.8)	0.750 (19.0)	0.250 (6.4)	.025 (0.6) ± .003 (0.07)	2.000 (50.8)	BBP12	R4313/ R6613
PS-750-2-YL-SC	100	6 to 4/0	0.250 (6.6) - 0.700 (17.8)	0.750 (19.0)	0.250 (6.4)	.025 (0.6) ± .003 (0.07)	2.000 (50.8)	BBP12	R4313/ R6613
PS-1000-2-WT-SC	100	2 to 0.950 dia.	0.333 (8.5) - 0.950 (24.1)	1.000 (25.4)	0.375 (9.5)	.036 (0.9) ± .003 (0.07)	2.000 (50.8)	BBP12	R4313/ R6613
PS-1000-2-YL-SC	100	2 to 0.950 dia.	0.333 (8.5) - 0.950 (24.1)	1.000 (25.4)	0.375 (9.5)	.036 (0.9) ± .003 (0.07)	2.000 (50.8)	BBP12	R4313/ R6613
<b>BBP12 1" Small Core, Double-Sided Printable, 2" Width</b>									
3PS-094-2-WT-SC	1,000	28 to 20	0.023 (0.6) - 0.080 (2.0)	0.094 (2.4)	0.024 (0.6)	.024 (0.6) ± .003 (0.07)	2.000 (50.8)	BBP12	R4313/ R6613
3PS-094-2-YL-SC	1,000	28 to 20	0.023 (0.6) - 0.080 (2.0)	0.094 (2.4)	0.024 (0.6)	.024 (0.6) ± .003 (0.07)	2.000 (50.8)	BBP12	R4313/ R6613
3PS-125-2-WT-SC	1,000	22 to 16	0.046 (1.2) - 0.110 (2.8)	0.125 (3.2)	0.047 (1.2)	.020 (0.5) ± .003 (0.07)	2.000 (50.8)	BBP12	R4313/ R6613
3PS-125-2-YL-SC	1,000	22 to 16	0.046 (1.2) - 0.110 (2.8)	0.125 (3.2)	0.047 (1.2)	.020 (0.5) ± .003 (0.07)	2.000 (50.8)	BBP12	R4313/ R6613
3PS-187-2-WT-SC	1,000	20 to 10	0.062 (1.6) - 0.150 (3.8)	0.187 (4.7)	0.062 (1.6)	.020 (0.5) ± .003 (0.07)	2.000 (50.8)	BBP12	R4313/ R6613
3PS-187-2-YL-SC	1,000	20 to 10	0.062 (1.6) - 0.150 (3.8)	0.187 (4.7)	0.062 (1.6)	.020 (0.5) ± .003 (0.07)	2.000 (50.8)	BBP12	R4313/ R6613
3PS-250-2-WT-SC	500	16 to 8	0.094 (2.4) - 0.215 (5.5)	0.250 (6.4)	0.093 (2.4)	.025 (0.6) ± .003 (0.07)	2.000 (50.8)	BBP12	R4313/ R6613
3PS-250-2-YL-SC	500	16 to 8	0.094 (2.4) - 0.215 (5.5)	0.250 (6.4)	0.093 (2.4)	.025 (0.6) ± .003 (0.07)	2.000 (50.8)	BBP12	R4313/ R6613
3PS-375-2-WT-SC	250	12 to 4	0.125 (3.2) - 0.320 (8.1)	0.375 (9.5)	0.125 (3.1)	.025 (0.6) ± .003 (0.07)	2.000 (50.8)	BBP12	R4313/ R6613
3PS-375-2-YL-SC	250	12 to 4	0.125 (3.2) - 0.320 (8.1)	0.375 (9.5)	0.125 (3.1)	.025 (0.6) ± .003 (0.07)	2.000 (50.8)	BBP12	R4313/ R6613
3PS-500-2-WT-SC	250	8 to 1	0.187 (4.8) - 0.450 (11.4)	0.500 (12.7)	0.187 (4.7)	.025 (0.6) ± .003 (0.07)	2.000 (50.8)	BBP12	R4313/ R6613
3PS-500-2-YL-SC	250	8 to 1	0.187 (4.8) - 0.450 (11.4)	0.500 (12.7)	0.187 (4.7)	.025 (0.6) ± .003 (0.07)	2.000 (50.8)	BBP12	R4313/ R6613
3PS-750-2-WT-SC	100	6 to 4/0	0.250 (6.4) - 0.700 (17.8)	0.750 (19.0)	0.250 (6.4)	.025 (0.6) ± .003 (0.07)	2.000 (50.8)	BBP12	R4313/ R6613
3PS-750-2-YL-SC	100	6 to 4/0	0.250 (6.4) - 0.700 (17.8)	0.750 (19.0)	0.250 (6.4)	.025 (0.6) ± .003 (0.07)	2.000 (50.8)	BBP12	R4313/ R6613
3PS-1000-2-WT-SC	100	2 to 0.950 dia.	0.333 (8.5) - 0.950 (24.1)	1.000 (25.4)	0.375 (9.5)	.036 (0.9) ± .003 (0.07)	2.000 (50.8)	BBP12	R4313/ R6613
3PS-1000-2-YL-SC	100	2 to 0.950 dia.	0.333 (8.5) - 0.950 (24.1)	1.000 (25.4)	0.375 (9.5)	.036 (0.9) ± .003 (0.07)	2.000 (50.8)	BBP12	R4313/ R6613

Approx. wire gauge based on AWG for THHN wire.

*Choosing Your PermaSleeve Color	
<b>Standard Stock Colors:</b> WT = White YL = Yellow	<b>Special Order Colors:</b> (Contact Brady Customer Service for availability) BK = Black      GR = Green      PK = Pink BL = Blue      GY = Gray      RD = Red BR = Brown      OR = Orange      VT = Violet

** Choosing Your PermaSleeve Pieces (optional):	
While 1 marker per sleeve is standard, you may special order to have each sleeve slit multiple times to produce multiple pieces. Example: PS-187-2-WT-SC becomes PS-187-2-WT-SC-2 This "2" means that this 2.000" sleeve is slit into two 1.000" pieces.	
<b>Standard Slit Option:</b> 1 marker per sleeve	<b>Other Available Slit Options:</b> (Contact Brady Customer Service for availability) 2, 3 or 4 markers per sleeve

Benchtop Printers

BBP®12 Label Printer