



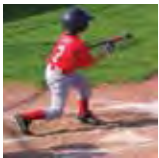
Carbon Fiber Sleeve For High Strength Tubular Structures



Fabricators know that resin coated carbon fiber structures are stronger and lighter than virtually any other construction types. CARBON FIBER construction techniques are appearing in everything from state of the art military and aerospace airframes to hockey sticks, fishing rods, and model cars.

Our Carbon Fiber braided sleeving provides a strong, biaxial carbon fiber matrix for stiff, lightweight tubular structures up to 3" in diameter without seams or overlap. The tightly braided, thick flexible sleeving will form itself to accommodate elliptical or asymmetrical profiles and provide the full coverage required for radial stability and torsional strength. Carbon Fiber constructions can be cut, drilled, sanded, and tooled with commonly available power or hand tools. They can be painted or left with the braid structure exposed.

- **Ideal for Strong, Lightweight Tubular Structures**
- **Variety of Diameters, Wall Thicknesses, and Braid Patterns**
- **Fast Turnaround on Custom Requirements**
- **Custom Lengths Available**



	Nominal Size	Part #	Wall Thickness	Expansion Range		Standard Spool Put-Ups		Available Colors	Lbs/100'
				Min.	Max.	Bulk Spool	Shop Spool		
CARBON LIGHT	1/4"	CAL0.25BK	.013"	1/8"	5/16"	500'	100'	Black (BK)	0.38
	1/2"	CAL0.50BK	.013"	1/4"	5/8"	250'	50'	Black (BK)	0.75
	3/4"	CAL0.75BK	.013"	5/16"	7/8"	250'	50'	Black (BK)	1.21
	1"	CAL1.00BK	.013"	3/8"	1 1/16"	200'	50'	Black (BK)	1.51
	1 1/4"	CAL1.25BK	.013"	1/2"	1 1/2"	125'	25'	Black (BK)	1.81
	1 1/2"	CAL1.50BK	.013"	5/8"	1 3/4"	100'	25'	Black (BK)	2.26
CARBON MEDIUM	2"	CAL2.00BK	.013"	3/4"	2 3/16"	100'	25'	Black (BK)	2.72
	1/2"	CAN0.50BK	.020"	1/4"	5/8"	250'	50'	Black (BK)	1.21
	3/4"	CAN0.75BK	.020"	5/16"	7/8"	250'	50'	Black (BK)	1.81
	1"	CAN1.00BK	.020"	7/16"	1 1/16"	200'	50'	Black (BK)	2.42
	1 1/4"	CAN1.25BK	.020"	9/16"	1 1/2"	125'	25'	Black (BK)	3.02
	1 1/2"	CAN1.50BK	.020"	3/4"	1 3/4"	100'	25'	Black (BK)	3.62
CARBON HEAVY	2"	CAN2.00BK	.020"	7/8"	2 3/16"	100'	25'	Black (BK)	4.52
	2 1/2"	CAN2.50BK	.020"	1 1/16"	3"	100'	25'	Black (BK)	5.43
	3/4"	CAH0.75BK	.030"	3/8"	7/8"	250'	50'	Black (BK)	2.72
	1"	CAH1.00BK	.030"	1/2"	1 1/16"	200'	50'	Black (BK)	3.62
	1 1/4"	CAH1.25BK	.030"	11/16"	1 1/2"	125'	25'	Black (BK)	4.83
	1 1/2"	CAH1.50BK	.030"	13/16"	1 3/4"	100'	25'	Black (BK)	5.43
	2"	CAH2.00BK	.030"	1"	2 3/16"	100'	25'	Black (BK)	7.25
	2 1/2"	CAH2.50BK	.030"	1 1/4"	3"	100'	25'	Black (BK)	9.09
	3"	CAH3.00BK	.030"	1 1/2"	3 1/2"	50'	25'	Black (BK)	10.87



Strong, lightweight, and stable carbon fiber tubes are easy to machine and finish, and mate well with metal fittings.

