



**Specialty Wire & Cord Sets** [specialtywire.com](http://specialtywire.com)

One Gallagher Rd., Hamden, CT 06517  
Phone: (203) 498-2932 | Fax: (203) 498-1602

## Power Cords - Thermoset Rubber (In Stock) RoHS Compliant

Retracted Lengths 48", 36", 30", 24", 18", 12"    Extended Lengths 1:5 Ratio    90deg C    UL/CSA

When rugged duty in an industrial environment is a requirement, choose thermoset rubber retractile cords. Available as light duty SVO types, medium duty SJ0OW types and heavy duty SOOW types.

P/N	Conds	Strand	Volts	AMP	Cable OD **	Coil OD	Weight	Weight	Weight	Weight
<b>18 AWG TYPE SVO UL/CSA 90deg C RoHS</b>										
							12"	24"	36"	48"
R1820	2	41/34	300	10	0.26	0.895	0.5	0.8	1	1.3
R1830	3	41/34	300	10/7	0.275	0.93	0.6	0.9	1.2	1.6
<b>18 AWG TYPE SJ0OW UL/CSA 90deg C RoHS</b>										
R1821	2	41/34	300	10	0.32	1.14	0.6	1.1	1.9	2.2
R1831	3	41/34	300	10/7	0.35	1.21	0.7	1.2	1.85	2.26
R1841	4	41/34	300	7/5.6	0.38	1.385	1	1.7	2.5	3.2
R1851	5	41/34	300	5.6	0.44	1.6	1.1	1.9	2.9	3.75
<b>18AWG TYPE SOOW UL/CSA 90C RoHS</b>										
R1832	3	41/34	600	10/7	0.385	1.4	1	1.7	2.5	3.2
R1842	4	41/34	600	7/5.6	0.415	1.455	1.2	2.2	3.3	4
R18102	10	41/34	600	5.6	0.6	2.05	2.2	4.2	6.1	8
<b>18 AWG TYPE AWM UL/CSA 90deg C RoHS</b>										
							12"	24"	36"	48"
R187A	7	41/34	300	4.9	0.5	1.72	1.4	2.6	3.9	5
R1815A	15	41/34	300	4.9	0.57	2	1.9	3.6	5.35	7
<b>16 AWG TYPE SJ0OW UL/CSA 90deg C RoHS</b>										
R1621	2	65/34	300	13	0.36	1.345	0.7	1.3	1.9	2.5
R1631	3	65/34	300	13/10	0.385	1.4	0.8	1.5	2.2	2.9
R1641	4	65/34	300	10/8	0.42	1.465	1.1	2.2	3.2	4
<b>16 AWG TYPE SOOW UL/CSA 90deg C RoHS</b>										
R1632	3	65/34	600	13/10	0.415	1.45	1.1	2.2	3.2	4
R1642	4	65/34	600	10/8	0.445	1.61	1.35	2.5	3.8	4.9
R1642	5	65/34	600	8	0.525	1.9	1.45	2.8	4.2	5.5
R1652	6	65/34	600	8	0.575	2	1.6	3.2	4.6	6
R1672	7	65.34	600	7	0.575	2	1.9	3.5	5.25	6.9
R1682	8	65/34	600	7	0.605	2.07	2.2	3.85	5.7	7.4
<b>14 AWG TYPE SOOW UL/CSA 90deg C RoHS</b>										
R1432	3	41/30	600	18/15	0.545	1.95	1.8	3.5	5.1	6.6
R1442	4	41/30	600	15/12	0.57	2	1.95	3.85	5.8	7.5
R1472	7	41/30	600	10	0.7	2.45	3	5.9	8.95	11.5
<b>12 AWG TYPE SOOW UL/CSA 90deg C RoHS</b>										
R1232	3	65/30	600	25/20	0.63	2.31	1.85	3.6	5.3	6.9
R1242	4	65/30	600	20/16	0.68	2.41	2.72	5.2	7.8	10
R1272	7	65/30	600	16	0.765	2.85	3.5	6.8	10.2	13.2
<b>10 AWG TYPE SOOW UL/CSA 90deg C RoHS</b>										
R1042	4	104/30	600	20	0.715	2.48	2.95	5.8	8.6	11.25

## Soft Bare Copper TPE Jacket - Black

Color Code - See Chart #2

Tangent Leads - Cut Blunt - 12" long on 12" retracted lengths, 6" long on others unless otherwise specified.

Options Available:

- Special retracted lengths - 240" retracted maximum – 100 ft extended maximum
- Special lead lengths
- NEMA 5-15P Plug (100 pcs minimum)
- Jacket removal and stripping of conductors



## Power Cords - TPE (In Stock) RoHS Compliant

Retracted Lengths 48", 36", 24", 12" Extended Lengths 1:5 Ratio 105deg C UL/CSA

Coiled cords made with TPE, a thermoplastic elastomer with rubber like qualities, offer good mid-range performance at reasonable cost and are the cord of choice for outdoor use in sub-zero temperatures.

Please call for availability of TPE cords requiring higher conductor counts or larger wire gauge sizes.

P/N	Conds	Strand	Volts	AMP	Cable OD **	Cable OD	Weight	Weight	Weight	Weight
<b>18 AWG TYPE SVEOW/SVTO UL/CSA 105deg C RoHS</b>										
							12"	24"	36"	48"
T1820	2	41/34	300	10	0.255	0.875	0.36	0.6	0.75	1.1
T1830	3	41/34	300	10/7	0.27	0.97	0.4	0.65	0.85	1.2
<b>18 AWG TYPE SJEOW/SJTO UL/CSA 105deg C RoHS</b>										
T1821	2	41/34	300	10	0.3	1.01	0.45	0.7	0.85	1.35
T1831	3	41/34	300	10/7	0.33	1.16	0.55	0.8	1.1	1.5
T1841	4	41/34	300	7/5.6	0.355	1.35	0.65	0.9	1.4	1.8
<b>16 AWG TYPE SJEOW/SJTO UL/CSA 105deg C RoHS</b>										
T1621	2	65/34	300	13	0.315	1.14	0.55	0.9	1.3	1.6
T1631	3	65/34	300	13/10	0.35	1.32	0.7	1.2	1.4	1.7
T1641	4	65/34	300	10/8	0.41	1.45	0.95	1.5	1.7	2.8
<b>16 AWG TYPE SEOW/STOW UL/CSA 105deg C RoHS</b>										
T1642	4	65.34	600	10/8	0.42	1.5	1.1	1.7	1.85	2.9
<b>14 AWG TYPE SJEOW/SJTO UL/CSA 105deg C RoHS</b>										
T1421	2	41/30	300	15	0.345	1.32	1.1	1.7	1.85	2.9
T1431	3	41/30	300	00001	0.37	1.37	1.2	1.9	2.7	3.6
<b>14 AWG TYPE SEOW/SJTO UL/CSA 105deg C RoHS</b>										
T1432	3	41/30	600	18/15	0.53	1.95	1.7	3.3	5.1	6.2
T1442	4	41/30	600	15/12	0.575	2	2	3.5	5.2	6.7
<b>12 AWG TYPE SJEOW/SJTO UL/CSA 105deg C RoHS</b>										
T1231	3	65/30	300	25/20	0.44	1.6	1.25	2.5	3.75	4.5
<b>12 AWG TYPE SEOW/SJTO UL/CSA 105deg C RoHS</b>										
T1232	3	65/30	600	25/20	0.6	2.25	1.8	3.5	5.5	7.2
T1242	4	65/30	600	20/16	0.645	2.34	2.2	4.3	6.7	8.5

## Soft Bare Copper/TPE Insulation TPE Jacket - Black

Color Code - See Chart #2

Options Available:

- Special retracted lengths - 240" retracted maximum – 100 ft extended maximum
- Special lead lengths
- NEMA 5-15P Plug (100 pcs minimum)
- Jacket removal and stripping of conductors

\*\*Inches - Dimensions Are Nominal

## Power Cords - PVC (In Stock) RoHS Compliant

Retracted Lengths 48", 36", 30", 24", 18", 12"    Extended Lengths 1:5 Ratio    105C    UL/CSA

A low cost alternative to other types of power cords in less demanding applications. When appearance counts PVC curly cords are winners. They offer glossy finishes in a limitless range of colors when made on a custom basis.

P/N	Conds	Strand	Volts	AMP	Cable OD **	Coil OD	Weight	Weight	Weight	Weight
<b>18 AWG TYPE SVTO UL/CSA 105deg C RoHS Black</b>										
							12"	24"	36"	48"
V1820	2	41/34	300	10	0.255	0.875	0.36	0.6	0.75	1.1
V1830	3	41/34	300	10/7	0.27	0.97	0.4	0.65	0.85	1.2
<b>18 AWG TYPE SJTOW UL/CSA 105deg C RoHS Black</b>										
V1821	2	41/34	300	10	0.3	1.01	0.45	0.7	0.85	1.35
V1831	3	41/34	300	10/7	0.33	1.16	0.55	0.8	1.1	1.5
V1841	4	41/34	300	7/5.6	0.355	1.35	0.65	0.9	1.4	1.8
<b>16 AWG TYPE SJTOW UL/CSA 105deg C RoHS Black</b>										
V1621	2	65/34	300	13	0.315	1.14	0.55	0.9	1.3	1.6
V1631	3	65/34	300	13/10	0.35	1.32	0.7	1.2	1.4	1.7
V1641	4	65/34	300	10/8	0.41	1.45	0.95	1.5	1.7	2.8
<b>14 AWG TYPE SJTOW UL/CSA 105deg C RoHS Black</b>										
V1431	3	41/30	300	18/15	0.37	1.37	1.2	1.9	2.7	3.6
<b>12 AWG TYPE SJTOW UL/CSA 105deg C RoHS Black</b>										
V1231	3	65/30	300	25/20	0.44	1.6	1.25	2.5	3.75	4.5

## Soft Bare Copper/PVC Insulation - PVC Jacket - Black

Color Code - See Chart #2

Options Available:

- Special retracted lengths - 240" retracted maximum – 100 ft extended maximum
- Special leads lengths
- NEMA 5-15P Plug (100 pcs minimum)
- Jacket removal and stripping of conductors
- White Jackets or other colors (Made to Order)

\*\*Inches - Dimensions Are Nominal

## COMMUNICATION/ELECTRONIC CORDS - PVC 23 Gauge (In Stock) RoHS

Retracted Lengths 48", 36", 24", 12" Extended Lengths: Ratio 1:5 80deg C UL

PVC has proven over many years to be a highly suitable material in the manufacture of retractable cords based on its durability and its ability to offer good performance at reasonable cost where power requirements are low to moderate. Its glossy finish is suitable in many applications and if required it can be made in many colors other than black. Included in this group, to name just a few, are cords suited for use in test instruments, medical equipment, barcode readers, hand-held controllers and photograph equipment. PVC cords can be made to UL AWM style 2464 rated at 80 deg 300volts. Please call when there is a requirement for conductor counts other than those shown here.

23 AWG 21/36TC BLACK PVC JACKET UL 2464 80deg C RoHS										
P/N	Conds	Strand	Volts	AMP	Cable OD **	Coil OD	Weight	Weight	Weight	Weight
							12"	24"	36"	48"
V232P	2	21/36	300	1	0.18	0.61	0.25	0.37	0.55	0.7
V233P	3	21/36	300	1	0.19	0.69	0.27	0.45	0.65	0.85
V234P	4	21/36	300	1	0.2	0.71	0.31	0.49	0.72	0.91
V235P	5	21/36	300	1	0.22	0.75	0.35	0.58	0.82	0.98
V236P	6	21/36	300	1	0.23	0.78	0.39	0.6	0.89	1.27
V237P	7	21/36	300	1	0.23	0.78	0.4	0.61	0.9	1.29
V238P	8	21/36	300	1	0.25	0.87	0.45	0.78	1.4	1.8
V2310P	10	21/36	300	1	0.28	0.99	0.59	1.03	1.6	2.4
V2312P	12	21/36	300	1	0.29	1.1	0.7	1.17	1.85	2.6
V2315P	15	21/36	300	1	0.32	1.3	0.83	1.4	2.15	2.8

### Tinned Soft Copper

Color Code See Color Chart #1

PP Insulated - Black PVC Jacket

Shield - Spiral and foil shield available

Options Available:

- Special Retracted Lengths and Tangent Leads

\*Inches - Dimensions Are Nominal

## COMMUNICATION/ELECTRONIC CORDS - PVC 23 Gauge (Spiral Shield) RoHS

Retracted Lengths 48", 36", 24", 12" Extended Lengths: Ratio 1:5 80deg C UL

This group exhibits the same characteristics as shown above but with the addition of aluminum foil shielding. This type of shielding forms an effective barrier to reduce or eliminate Electro Magnetic Interference (EMI) , Radio Frequency Interference (RFI) and Electro Static Discharge (ESD). Tinned copper served shields are also available and can be combined with foil shielding for even better performance. Please call when there is a requirement for conductor counts other than those shown here.

### 23AWG 21/36TC BLACK PVC JACKET SHIELDED UL 2464 80deg C RoHS

P/N	Conds	Strand	Volts	AMP	Cable OD **	Coil OD	Weight	Weight	Weight	Weight
							12"	24"	36"	48"
V233PS	3	21/36	300	1	0.2	0.68	0.26	0.44	0.65	0.85
V234PS	4	21/36	300	1	0.22	0.73	0.3	0.49	0.71	0.92
V235PS	5	21/36	300	1	0.23	0.76	0.36	0.58	0.83	0.97
V236PS	6	21/36	300	1	0.24	0.79	0.39	0.6	0.89	1.25
V237PS	7	21/36	300	1	0.24	0.43	0.75	1.1	1.4	1.8
V238PS	8	21/36	300	1	0.26	0.875	0.8	0.9	1.6	2
V2310PS	10	21/36	300	1	0.3	1.2	0.85	1.1	1.8	2.3

## Tinned Soft Copper

Color Code See Color Chart #1

PP Insulated - Black PVC Jacket

Options Available:

- Special Retracted Lengths and Tangent Leads
- Also Available with Foil Shield Plus Drain Wire

\*Inches - Dimensions Are Nominal

## COMMUNICATION/ELECTRONIC CORDS - TPU 23 Gauge (FR-PU) (In Stock) RoHS Compliant

Retracted Lengths 48", 36", 24", 12" Extended Lengths: Ratio 1:5 60deg C UL

This group of flame retardant cords is recognized by UL as Appliance Wire Material Styles 20197 and 20318. They offer a high degree of performance in severe duty applications and in cold environments. They are especially well suited for usage in test instruments, medical equipment, barcode readers, hand-held computers, game machines, hand-held controllers, headset communications ground to cockpit, photographic equipment and other similar applications. Similar performance is available with non-flame retardant non UL cords at reduced cost. Please call when there is a requirement for conductor counts other than those shown below.

23 AWG 21/36TC BLACK FRPOLYURETHANE JACKET UL 20318 60deg C RoHS										
P/N	Conds	Strand	Volts	AMP	Cable OD **	Coil OD	Weight	Weight	Weight	Weight
							12"	24"	36"	48"
UF232P	2	21/36	300	1	0.18	0.61	0.25	0.37	0.55	0.7
UF233P	3	21/36	300	1	0.19	0.69	0.27	0.45	0.65	0.85
UF234P	4	21/36	300	1	0.2	0.71	0.31	0.49	0.72	0.91
UF235P	5	21/36	300	1	0.22	0.75	0.35	0.58	0.82	0.98
UF236P	6	21/36	300	1	0.23	0.78	0.39	0.6	0.89	1.27
UF237P	7	21/36	300	1	0.23	0.78	0.4	0.61	0.9	1.29
UF238P	8	21/36	300	1	0.25	0.87	0.45	0.78	1.4	1.8
UF2310P	10	21/36	300	1	0.28	0.99	0.59	1.03	1.6	2.4
UF2312P	12	21/36	300	1	0.29	1.1	0.7	1.17	1.85	2.6
UF2315P	15	21/36	300	1	0.310	1.12	0.90	1.50	2.30	3.25
UF2320P	20	21/36	300	1	0.345	1.20	1.17	1.95	3.10	4.35

## Tinned Soft Copper/PP Insulated, FR-PU Jacketed - Black Matte Finish

Color Code - See Color Chart #1

Options Available:

- Special Retracted Lengths - 120" maximum on most constructions.
- Glossy PU Jacket - Non UL - Change the prefix letter from UF to U
- Special Retracted Lengths and Tangent Leads

\*\*Inches - Dimensions Are Nominal



## COMMUNICATION/ELECTRONIC SHIELDED CORDS - TPU (FR-PU) 23 Gauge (In Stock) RoHS Compliant

Retracted Lengths 48", 36", 24", 12" Extended Lengths: Ratio 1:5 60deg C UL

These cords exhibit the same characteristics as shown above but with the addition of aluminum foil shielding. This type of shielding forms an effective barrier to reduce or eliminate Electro Magnetic Interference (EMI) , Radio Frequency Interference (RFI) and Electro Static Discharge (ESD). Tinned copper served shields are also available and can be combined with foil shielding for even better performance.

23AWG 21/36TC FR POLYURETHANE JACKET SHIELDED UL 20318 60deg C RoHS										
P/N	Conds	Strand	Volts	AMP	Cable OD **	Coil OD	Weight	Weight	Weight	Weight
							12"	24"	36"	48"
UF232PA	2	21/36	300	1	0.19	0.6	0.21	0.35	0.52	0.69
UF233PA	3	21/36	300	1	0.2	0.68	0.26	0.44	0.65	0.85
UF234PA	4	21/36	300	1	0.22	0.73	0.3	0.49	0.71	0.92
UF235PA	5	21/36	300	1	0.23	0.76	0.36	0.58	0.83	0.97
UF236PA	6	21/36	300	1	0.24	0.79	0.39	0.6	0.89	1.25
UF237PA	7	21/36	300	1	0.24	0.43	0.75	1.1	1.4	1.8
UF238PA	8	21/36	300	1	0.26	0.875	0.8	0.9	1.6	2
UF2310PA	10	21/36	300	1	0.285	1	0.85	1.1	1.8	2.3
UF2315PA	15	21/36	300	1	0.310	1.12	0.90	1.5	2.30	3.25
UF2320PA	20	21/36	300	1	0.345	1.20	1.17	1.95	3.10	4.35

## Tinned Soft Copper/PP Insulated, FR-PU Jacketed - Black Matte Finish

Color Code - See Color Chart #1

Aluminum Mylar Shield with Drain – 100% Coverage

Options Available:

- Glossy PU Jacket - Non UL - Change the prefix letter from UF to U
- Tinned Copper Served Shield (Spiral Wrap) – 90% Coverage – Change Suffix Letters from PA to PS
- Double Shield of Aluminum Mylar Plus Spiral Wrap - Change Suffix Letters from PA to PAS
- Other Gauge Sizes and/or Strandings Available
- Special Retracted Lengths and Tangent Leads

\*\*Inches - Dimensions Are Nominal

## COMMUNICATION/ELECTRONIC CORDS - TPE 23 Gauge (Made to Order) RoHS Compliant

Retracted Lengths 48", 36", 24", 12"    Extended Lengths: Ratio 1:5    105deg C    C-UL

Thermoplastic Elastomer (TPE) is a material with the look and feel of rubber making it highly suitable for use in retractable cords. It exhibits flexibility, toughness, with good high and low temperature operating characteristics, excellent resistance to water, alcohol and acids, and especially, outstanding electrical properties. They are well suited for usage in test instruments, medical equipment, barcode readers, hand-held computers, game machines, hand-held controllers, photographics equipment, industrial weighing equipment and other similar applications. Please call when there is a requirement for conductor counts other than those shown below.

23AWG 21/36TC BLACK TPE JACKET FOIL SHIELDED NON UL 105deg C RoHS										
P/N	Conds	Strand	Volts	AMP	Cable OD **	Coil OD	Weight	Weight	Weight	Weight
							12"	24"	36"	48"
T232PA	2	21/36	300	1	0.19	0.6	0.21	0.35	0.52	0.69
T233PA	3	21/36	300	1	0.2	0.68	0.26	0.44	0.65	0.85
T234PA	4	21/36	300	1	0.22	0.73	0.3	0.49	0.71	0.92
T235PA	5	21/36	300	1	0.23	0.76	0.36	0.58	0.83	0.97
T236PA	6	21/36	300	1	0.24	0.79	0.39	0.6	0.89	1.25
T237PA	7	21/36	300	1	0.24	0.43	0.75	1.1	1.4	1.8
T238PA	8	21/36	300	1	0.26	0.875	0.8	0.9	1.6	2
T2310PA	10	21/36	300	1	0.3	1.2	0.85	1.1	1.8	2.3

## Tinned Soft Copper/PP Insulated, TPE Jacketed - Black Matte Finish

Color Code - See Color Chart #1

Options Available:

- Special Retracted Lengths - 120" maximum on most constructions.
- Special Tangent Leads

\*\*Inches - Dimensions Are Nominal

## COMMUNICATION/ELECTRONIC CORDS WITH FOIL SHIELD - TPE 23 Gauge (In Stock) RoHS Compliant

Retracted Lengths 48", 36", 24", 12" Extended Lengths: Ratio 1:5 105deg C C-UL

These cords exhibit the same characteristics as shown above but with the addition of aluminum foil shielding.

This type of shielding forms an effective barrier to reduce or eliminate Electro Magnetic Interference (EMI) , Radio Frequency Interference (RFI) and Electro Static Discharge (ESD). Tinned copper served shields are also available and can be combined with foil shielding for even better performance.

### 23 AWG 21/36TC BLACK TPE JACKET 105deg C RoHS NON UL

P/N	Conds	Strand	Volts	AMP	Cable OD **	Coil OD	Weight	Weight	Weight	Weight
							12"	24"	36"	48"
T232P	2	21/36	300	1	0.18	0.61	0.25	0.37	0.55	0.7
T233P	3	21/36	300	1	0.19	0.69	0.27	0.45	0.65	0.85
T234P	4	21/36	300	1	0.2	0.71	0.31	0.49	0.72	0.91
T235P	5	21/36	300	1	0.22	0.75	0.35	0.58	0.82	0.98
T236P	6	21/36	300	1	0.23	0.78	0.39	0.6	0.89	1.27
T237P	7	21/36	300	1	0.23	0.78	0.4	0.61	0.9	1.29
T238P	8	21/36	300	1	0.25	0.87	0.45	0.78	1.4	1.8
T2310P	10	21/36	300	1	0.28	0.99	0.59	1.03	1.6	2.4
T2312P	12	21/36	300	1	0.29	1.1	0.7	1.17	1.85	2.6
T2315P	15	21/36	300	1	0.32	1.3	0.83	1.4	2.15	2.8

## Tinned Soft Copper/PP Insulated, TPE Jacketed - Black Matte Finish

Color Code - See Color Chart #1

Aluminum Mylar Shield with Drain – 100% Coverage

Options Available:

- Tinned Copper Served Shield (Spiral Wrap) – 90% Coverage – Change Suffix Letters from PA to PS
- Double Shield of Aluminum Mylar Plus Spiral Wrap - Change Suffix Letters from PA to PAS
- Other Gauge Sizes and/or Strandings Available
- Special Retracted Lengths - 120" maximum on most constructions.
- Special Tangent Leads

\*\*Inches - Dimensions Are Nominal

## Miniature Cords - PVC 28 Gauge (In Stock) RoHS Compliant

Retracted Lengths 48", 36", 24", 12" Extended Lengths: Ratio 1:5 80deg C UL

Miniature coiled cords are versatile performers where power consumption is minimal combined with the need for light weight and flexibility. Please call when there is a requirement for conductor counts other than those shown below.

28AWG 7/36TC PVC JACKET UL 2464 80C RoHS										
P/N	Conds	Strand	Volts	AMP	Cable OD **	Coil OD	Weight	Weight	Weight	Weight
							12"	24"	36"	48"
V282P	2	7/36	300	1	0.15	0.55	0.16	0.3	0.42	0.58
V283P	3	7/36	300	1	0.16	0.57	0.17	0.31	0.44	0.62
V284P	4	7/36	300	1	0.17	0.58	0.19	0.35	0.47	0.67
V285P	5	7/36	300	1	0.18	0.6	0.22	0.39	0.55	0.76
V286P	6	7/36	300	1	0.19	0.61	0.23	0.42	0.6	0.83
V287P	7	7/36	300	1	0.19	0.61	0.24	0.43	0.6	0.83
V288P	8	7/36	300	1	0.21	0.73	0.27	0.49	0.7	0.93
V2810P	10	7/36	300	1	0.22	0.755	0.31	0.56	0.81	1.12
V2812P	12	7/36	300	1	0.23	0.79	0.33	0.6	0.86	1.2
<b>V2815P</b>	15	7/36	300	1	0.25	0.875	0.35	0.63	0.91	1.26

## Tinned Soft Copper PP Insulated, PVC Jacket - Black

Color Code - See Color Chart #1

Options Available:

- Glossy PU Jacket - Non UL - Change the P/N from V to U
- FR-PU Jacket - UL - Change the P/N from V to UF
- Other Gauge Sizes And/Or Strandings available

\*Inches - Dimensions Are Nominal

## Miniature Cords - with Foil Shield -PVC 28 GAUGE (Made to Order) RoHS

Retracted Lengths 48", 36", 24", 12"Extended Lengths: Ratio 1:5 80deg C UL

Aluminum polyester foil shields with 100% coverage form an effective barrier to reduce or eliminate Electro Magnetic Interference (EMI) or Radio Frequency Interference (RFI) or Electro Static Discharge (ESD). Tinned copper served shields are also available and can be combined with foil shields for even better performance. Please call when there is a requirement for conductor counts other than those shown below.

28AWG 7/36TC PVC JACKET FOIL SHIELDED UL 2464 80C RoHS										
P/N	Conds	Strand	Volts	AMP	Cable OD **	Coil OD	Weight	Weight	Weight	Weight
							12"	24"	36"	48"
V282PA	2	7/36	300	1	0.16	0.57	0.17	0.31	0.44	0.61
V283PA	3	7/36	300	1	0.17	0.59	0.19	0.34	0.5	0.68
V284PA	4	7/36	300	1	0.18	0.6	0.2	0.36	0.52	0.72
V285PA	5	7/36	300	1	0.19	0.61	0.23	0.42	0.6	0.83
V286PA	6	7/36	300	1	0.2	0.63	0.25	0.45	0.65	0.9
V287PA	7	7/36	300	1	0.2	0.65	0.26	0.47	0.68	0.94
V288PA	8	7/36	300	1	0.22	0.75	0.29	0.52	0.75	1.04
V2810PA	10	7/36	300	1	0.23	0.78	0.32	0.58	0.83	1.15
V2812PA	12	7/36	300	1	0.24	0.82	0.34	0.61	0.88	1.22

## Tinned Soft Copper PP Insulated, PVC Jacket - Black

Aluminum Mylar Shield With Drain - 100% Coverage

Color Code - See Color Chart #1

Options Available:

- Glossy PU Jacket - Non UL - Change the P/N from V to U
- FR-PU Jacket - UL - Change the P/N from V to UF
- Other Gauge Sizes And/Or Strandings available
- Tinned Copper Served Shield – 90% Coverage – Change Suffix letters from PA to PS

## Miniature Cords - TPE 28 Gauge (Made to Order) RoHS Compliant

Retracted Lengths 48", 36", 24", 12" Extended Lengths: Ratio 1:5 105deg C Non-UL

28AWG 7/36TCTPE JACKET NON UL 105C RoHS										
P/N	Conds	Strand	Volts	AMP	Cable OD **	Coil OD	Weight	Weight	Weight	Weight
							12"	24"	36"	48"
T282P	2	7/36	300	1	0.15	0.55	0.16	0.3	0.42	0.58
T283P	3	7/36	300	1	0.16	0.57	0.17	0.31	0.44	0.62
T284P	4	7/36	300	1	0.17	0.58	0.19	0.35	0.47	0.67
T285P	5	7/36	300	1	0.18	0.6	0.22	0.39	0.55	0.76
T286P	6	7/36	300	1	0.19	0.61	0.23	0.42	0.6	0.83
T287P	7	7/36	300	1	0.19	0.61	0.24	0.43	0.6	0.83
T288P	8	7/36	300	1	0.21	0.73	0.27	0.49	0.7	0.93
T2810P	10	7/36	300	1	0.22	0.755	0.31	0.56	0.81	1.12
T2812P	12	7/36	300	1	0.23	0.79	0.33	0.6	0.86	1.2
T2815P	15	7/36	300	1	0.25	0.875	0.35	0.63	0.91	1.26

## Tinned Soft Copper PP Insulated, TPE Jacket - Black Matte

Color Code - See Color Chart #1

Options Available:

- Other Gauge Sizes And/Or Strandings available

\*Inches - Dimensions Are Nominal



## Miniature Cords - with Foil Shield -TPE 28 GAUGE (Made to Order) RoHS

Retracted Lengths 48", 36", 24", 12"Extended Lengths: Ratio 1:5 105deg C Non-UL

28AWG 7/36TC TPE JACKET FOIL SHIELDED NON UL 105C RoHS										
P/N	Conds	Strand	Volts	AMP	Cable OD **	Coil OD	Weight	Weight	Weight	Weight
							12"	24"	36"	48"
T282PA	2	7/36	300	1	0.16	0.57	0.17	0.31	0.44	0.61
T283PA	3	7/36	300	1	0.17	0.59	0.19	0.34	0.5	0.68
T284PA	4	7/36	300	1	0.18	0.6	0.2	0.36	0.52	0.72
T285PA	5	7/36	300	1	0.19	0.61	0.23	0.42	0.6	0.83
T286PA	6	7/36	300	1	0.2	0.63	0.25	0.45	0.65	0.9
T287PA	7	7/36	300	1	0.2	0.65	0.26	0.47	0.68	0.94
T288PA	8	7/36	300	1	0.22	0.75	0.29	0.52	0.75	1.04
T2810PA	10	7/36	300	1	0.23	0.78	0.32	0.58	0.83	1.15
T2812PA	12	7/36	300	1	0.24	0.82	0.34	0.61	0.88	1.22

## Tinned Soft Copper PP Insulated, TPE Jacket - Black Matte

Aluminum Mylar Shield With Drain - 100% Coverage

Color Code - See Color Chart #1

Options Available:

- Tinned Copper Served Shield – 90% Coverage – Change Suffix letters from PA to PS FR-PU
- Other Gauge Sizes And/Or Strandings available

\*Inches - Dimensions Are Nominal



## Minature Cords - FR Polyurethane 26 Guage (In Stock) RoHS Compliant

Retracted Lengths 48", 36", 24", 12" Extended Lengths: Ratio 1:5 60deg C UL

26AWG 7/34TC FR POLYURETHANE JACKET UL 20318 60C RoHS										
P/N	Conds	Strand	Volts	AMP	Cable OD **	Coil OD	Weight	Weight	Weight	Weight
							12"	24"	36"	48"
UF262P	2	7/34	300	1	0.14	0.55	0.18	0.33	0.47	0.65
UF263P	3	7/34	300	1	0.15	0.57	0.2	0.36	0.52	0.72
UF264P	4	7/34	300	1	0.16	0.58	0.22	0.4	0.57	0.79
UF265P	5	7/34	300	1	0.17	0.6	0.24	0.43	0.62	0.86
UF266P	6	7/34	300	1	0.18	0.61	0.27	0.49	0.7	0.97
UF267P	7	7/34	300	1	0.18	0.61	0.28	0.51	0.73	1.01
UF268P	8	7/34	300	1	0.19	0.73	0.3	0.54	0.78	1.08
UF2610P	10	7/34	300	1	0.2	0.755	0.34	0.61	0.88	1.22
UF2612P	12	7/34	300	1	0.22	0.79	0.37	0.67	0.97	1.33
UF2615P	15	7/34	300	1	0.24	0.875	0.43	0.77	1.12	1.55

## Tinned Soft Copper PP Insulated, FR PU Jacket, Black Matte

Color Code - See Color Chart #1

Options Available:

- Glossy PU Jacket - Non UL - Change the P/N from UF to U
- PVC Jacket - UL - Change the P/N from UF to V
- Other Gauge Sizes And/Or Strandings available

\*Inches - Dimensions Are Nominal



## Minature Cords - with Foil Shield FR Polyurethane 26 Guage (In Stock) RoHS

Retracted Lengths 48", 36", 24", 12" Extended Lengths: Ratio 1:5 60deg C UL

26AWG 7/34TC FR POLYURETHANE JACKET FOIL SHIELDED UL 20318 60C RoHS										
P/N	Conds	Strand	Volts	AMP	Cable OD **	Coil OD	Weight	Weight	Weight	Weight
							12"	24"	36"	48"
UF262PA	2	7/34	300	1	0.15	0.57	0.19	0.34	0.49	0.68
UF263PA	3	7/34	300	1	0.16	0.59	0.21	0.37	0.54	0.75
UF264PA	4	7/34	300	1	0.17	0.62	0.23	0.41	0.59	0.82
UF265PA	5	7/34	300	1	0.18	0.65	0.25	0.44	0.64	0.89
UF266PA	6	7/34	300	1	0.2	0.68	0.28	0.5	0.72	1.01
UF267PA	7	7/34	300	1	0.2	0.68	0.29	0.52	0.75	1.04
UF268PA	8	7/34	300	1	0.21	0.7	0.31	0.55	0.81	1.12
UF2610PA	10	7/34	300	1	0.22	0.9	0.35	0.62	0.91	1.25

## Tinned Soft Copper PP Insulated, FR Polyurethane Jacket - Black Matte

Aluminum Mylar Shield With Drain - 100% Coverage

Color Code - See Color Chart #1

Options Available:

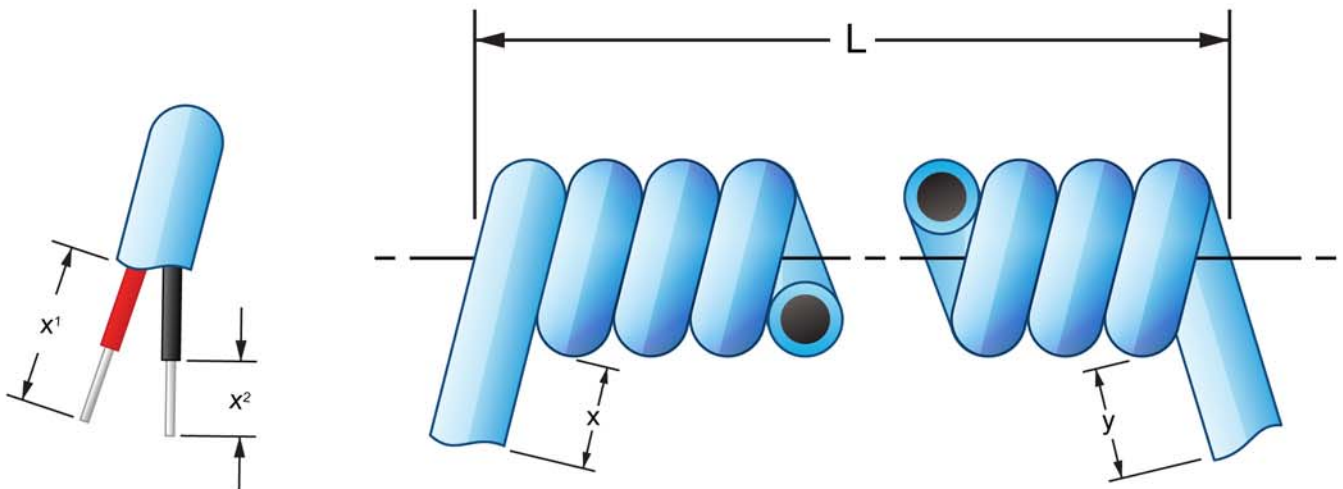
- Glossy PU Jacket - Non UL - Change the P/N from UF to U
- PVC Jacket - UL - Change the P/N from UF to V
- Tinned Copper Served Shield – 90% Coverage – Change Suffix letters from PA to PS
- Other Gauge Sizes And/Or Strandings available

\*Inches - Dimensions Are Nominal

## Ordering Instructions

The following will enable us to provide you with the exact type of retractile cord or cable you require.

- Product application
- Voltage/Amperage rating of equipment
- Number of conductors required
- Gauge size
- Insulation preferred: Polypropylene (PP), Polyvinyl Chloride (PVC), Ethylene Propylene Rubber (EPR), Hytrel
- Shielding, type, capacitance
- Jacket preferred:
  1. Polyvinyl Chloride (PVC)
  2. Polyurethane (PU) or Flame-Retarded Polyurethane (FR-PU)
  3. Thermoplastic Elastomer/Rubber (TPR/TPE)
  4. Hytrel
  5. Thermoset Rubber — Available only on 18 or larger AWG sizes
- Quantities required
- Is current sample available?
- See Sketch below for additional information.
  1. "L" dimension — retracted. Use 1:5 ratio for extended length.
  2. Provide following dimensions where applicable.
    - X and Y Length of leads. Specify if natural or axial style required.
    - X1 and/or Y1 — amount of jacket removal required.
    - X2 and/or y2 — length of insulation to be removed.Specify if terminals, twisting and/or tinning required.



## Insulation Compounds

60C	PolyVinyl Chloride	Rated 300 & 500	Volts/Mil
80C	PolyVinyl Chloride	Rated 500	Volts/Mil
105C	PolyVinyl Chloride	Rated 500	Volts/Mil
105C	Ethylene Propylene	Rated 600	Volts/Mil
80C	Polypropylene (PP)	Rated 600	Volts/Mil
	HytreI		

## Jacket Compounds – Colors Upon Request

- 60C,80C,105C PolyVinyl Chloride (PVC)
- Polyurethanes(PU)
- 105C Thermoplastic Rubber(TPR/TPE)
- HytreI

## Construction

- Single Conductor to Multi-Conductor Cables
- Served Shield
- Mylar Shield
- Braid Shield

## Wire

- 30 to 14 Gauge Copper Wire, Bare or Tinned
- 30 to 14 Gauge Soft Tinned Copper

## Coiling

- Most of the cable constructions listed above can be coiled (except those made with braided shields).

## Applications (partial listing)

Defibrillator	Medical Electronics
TV Hand Held Camera (Coaxial)	Marine Telephones
Language Lab	Telecommunications Cords
Robotic Cords	Microphone Cords
Data Processing Printer Cords	Aircraft-Communication Head Sets
Metal Detectors(Field Hand Held Units)	Equipment Control Cords

SWC is ready to give it's customers all the technical help needed to design their cables to insure a quality product at very competitive pricing.

NOTE: Retracted lengths are approximate. Allow for shrinkage. Extended lengths are guaranteed.

Color Chart #1		
Conductors	Color	Stripe Color
1	BLACK	-
2	WHITE	-
3	RED	-
4	GREEN	-
5	ORANGE	-
6	BLUE	-
7	YELLOW	-
8	BROWN	-
9	GRAY	-
10	PINK	-
11	VIOLET	-
12	TAN	-
13	WHITE	BLACK
14	RED	BLACK
15	GREEN	BLACK
16	ORANGE	BLACK
17	BLUE	BLACK
18	BLACK	WHITE
19	RED	WHITE
20	GREEN	WHITE
15	GREEN	BLACK

Color Chart #2		
Conductors	Color	Stripe Color
1	BLACK	-
2	WHITE	-
3	GREEN	-
4	RED	-
5	ORANGE	-
6	BLUE	-
7	WHITE	BLACK
8	RED	BLACK
9	GREEN	BLACK
10	ORANGE	BLACK
11	BLUE	BLACK
12	BLACK	WHITE
13	RED	WHITE
14	GREEN	WHITE
15	BLUE	WHITE

## Specialty Wire & Cord Sets

One Gallagher Rd., Hamden, CT 06517

Phone: (203) 498-2932 | Fax: (203) 498-1602 | [specialtywire.com](http://specialtywire.com)