

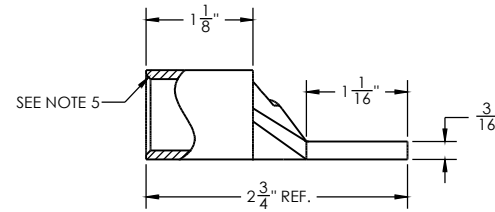
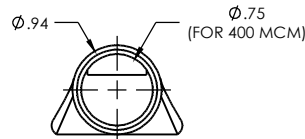
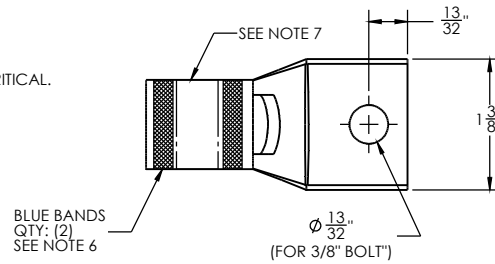
DWG NO. CL-400-3/8 REV - SIZE A

NOTES:

1. MATERIAL: HIGH CONDUCTIVITY COPPER SEAMLESS TUBING.
2. FINISH: TIN PLATE
3. CUT LENGTH:
4. MADE FROM: 04-039-0012-14
5. COUNTERSINK TO "BREAK" INSIDE EDGE OF BARREL.
6. THE (2) BLUE BANDS ARE TO BE EQUALLY SPACED AND CENTERED ON THE BARREL.
7. ALL THE TEXT SHOWN MUST APPEAR LEGIBLY, WRAPPED AROUND THE BARREL OR TANG. THE LOCATION OR ORIENTATION OF THE TEXT IS NOT CRITICAL. TEXT TO STATE:

SPP
CL-400-3/8

REVISIONS			
REV	DESCRIPTION	DATE	APPROVED



<p>SPP SOUTHPORT PRODUCTS 157 COLBROOK RIVER ROAD/BOX 747 WINDY, CT 06098</p>	CL-400-3/8	
	SHORT BARREL COMPRESSION LUG W/ 3/8" MOUNTING HOLES (400 MCM)	
<small>TOLERANCES: (DECIMAL IN.) .XX: ±.02 .XXX: ±.005 .XXXX: ±.0005 METRIC: (MM) X: ±.25 .XX: ±.13 FRACTIONS: 1/32" ANGLES: 1/2 DEG UNLESS OTHERWISE SPECIFIED</small>	<small>DWN. BY:</small> MAREK 10/27/2009 <small>MODLED BY:</small> MAREK 10/27/2009	<small>DESIGN ENG.:</small> <small>CHKD. BY:</small>
<small>DWG NO.</small> CL-400-3/8	<small>SCALE</small> NONE	<small>SIZE</small> A <small>SHEET</small> 1 OF 1 <small>REV</small> --

This document may be out-of-date because it has file references that may have been updated. (more...)