

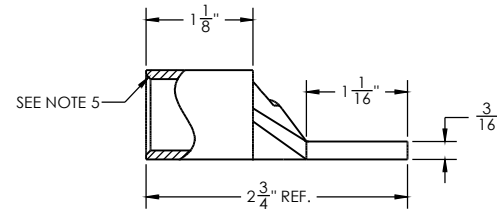
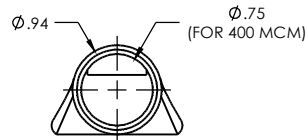
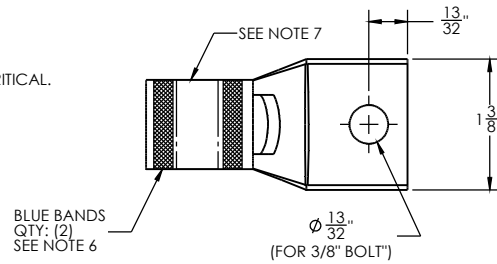
DWG NO. CL-400-3/8      REV -      SIZE A

**NOTES:**

1. MATERIAL: HIGH CONDUCTIVITY COPPER SEAMLESS TUBING.
2. FINISH: TIN PLATE
3. CUT LENGTH:
4. MADE FROM: 04-039-0012-14
5. COUNTERSINK TO "BREAK" INSIDE EDGE OF BARREL.
6. THE (2) BLUE BANDS ARE TO BE EQUALLY SPACED AND CENTERED ON THE BARREL.
7. ALL THE TEXT SHOWN MUST APPEAR LEGIBLY, WRAPPED AROUND THE BARREL OR TANG. THE LOCATION OR ORIENTATION OF THE TEXT IS NOT CRITICAL. TEXT TO STATE:

SPP  
CL-400-3/8

REVISIONS			
REV	DESCRIPTION	DATE	APPROVED



<p><b>SPP</b> SOUTHPORT PRODUCTS 157 COLBROOK RIVER ROAD/BOX 747 WINDSO, CT 06098</p> <p>TOLERANCES: (DECIMAL IN.) .XX: ±.02 .XXX: ±.005 .XXXX: ±.0005 METRIC: (MM) X: ±.25 .XX: ±.13 FRACTIONS: 1/16: ANGLES: 1/2 DEG UNLESS OTHERWISE SPECIFIED</p>	<b>CL-400-3/8</b>	
	SHORT BARREL COMPRESSION LUG W/ 3/8" MOUNTING HOLES (400 MCM)	
	DWN. BY: MAREK 10/27/2009	DESIGN ENG.:
	MODIFIED BY: MAREK 10/27/2009	CHKD. BY:
DWG NO. CL-400-3/8	SCALE NONE	SIZE A
	SHEET 1 OF 1	REV --

This document may be out-of-date because it has file references that may have been updated. (more...)