
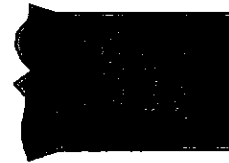
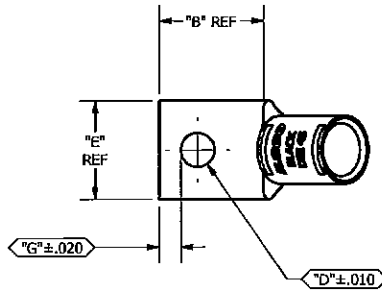


NOTE: MOUNTING SURFACE MUST BE BURR FREE AFTER TUMBLING
2° MAXIMUM PULLBACK ALLOWED ON THE BARREL.

| | | | | | |
|---------------------|-------------------------------|------------------------|---|------------------------------|---|
| SCREW: N/A | MATERIAL: L115325, CDA-122 CU | CELL: CSP | TOLERANCES UNLESS OTHERWISE SPECIFIED 2 PL. DEC. ±.010 3 PL. DEC. ±.015 | DWG. NO. Y0811-S-4 |  |
| CAT. NO.: SEE CHART | PLATING: EL-TIN | STUFFER SHT.: FORM 157 | TIME CL. ±.015 ANGLES ±1 | SHEET 1 OF 1 | |
| MASS: N/A | MARKING: SEE CHART | | DRAWN BY: DW | SCALE: 1:1 | |
| SURFACE AREA: 2 | | | DATE: 6/3/2008 | SIZE: B | |

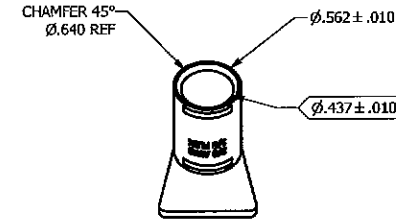
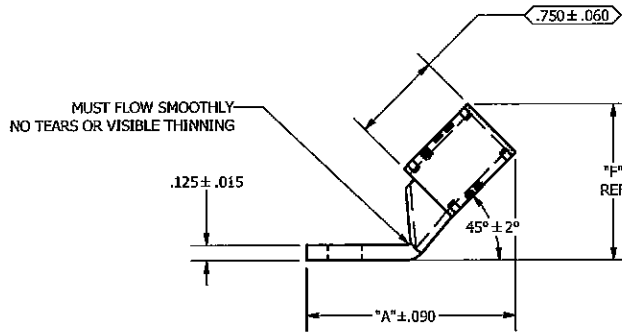
| REV. | DESCRIPTION |
|------|---|
| B | CHANGE INK MARKING ECN 28363 JG 02/11/11 |



DETAIL C
SCALE 2 : 1
INK MARK TOP



DETAIL D
SCALE 2 : 1
INK MARK BOTTOM



| PART NUMBER | CATALOG NUMBER | "A" | "B" | "C" | "D" | "E" | "F" | "G" | TANG MARKING |
|-------------|----------------|-------|-------|-----|-------|-------|-------|-------|---|
| Y0811C33T-4 | CSWB-2/0-10-4 | 1.513 | 0.562 | | 0.219 | 0.811 | 1.301 | 0.148 | UL, ILSCO, CSA, CSWB-2/0-10-4, 10, 2/0 AWG, 1/0 FLEX, DIE 45 |
| Y0811C36T-4 | CSWB-2/0-14-4 | 1.826 | 0.875 | | 0.281 | 0.811 | 1.301 | 0.180 | UL, ILSCO, CSA, CSWB-2/0-14-4, 1/4, 2/0 AWG, 1/0 FLEX, DIE 45 |
| Y0811C42T-4 | CSWB-2/0-12-4 | 2.201 | 1.250 | | 0.562 | 0.811 | 1.301 | 0.265 | UL, ILSCO, CSA, CSWB-2/0-12-4, 1/2, 2/0 AWG, 1/0 FLEX, DIE 45 |
| Y0811C43T-4 | CSWB-2/0-58-4 | 2.388 | 1.437 | | 0.656 | TBD | 1.301 | 0.343 | UL, ILSCO, CSA, CSWB-2/0-58-4, 5/8, 2/0 AWG, 1/0 FLEX, DIE 45 |
| Y0811C44T-4 | CSWB-2/0-34-4 | 2.638 | 1.687 | | 0.781 | 0.969 | 1.301 | 0.359 | UL, ILSCO, CSA, CSWB-2/0-34-4, 3/4, 2/0 AWG, 1/0 FLEX, DIE 45 |
| Y0811C46T-4 | CSWB-2/0-38-4 | 1.826 | 0.875 | | 0.406 | 0.811 | 1.301 | 0.211 | UL, ILSCO, CSA, CSWB-2/0-38-4, 3/8, 2/0 AWG, 1/0 FLEX, DIE 45 |
| Y0811C47T-4 | CSWB-2/0-516-4 | 1.826 | 0.875 | | 0.343 | 0.811 | 1.301 | 0.180 | UL, ILSCO, CSA, CSWB-2/0-516-4, 5/16, 2/0 AWG, 1/0 FLEX, DIE 45 |