
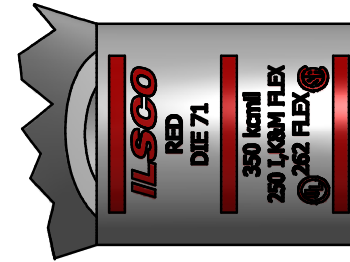
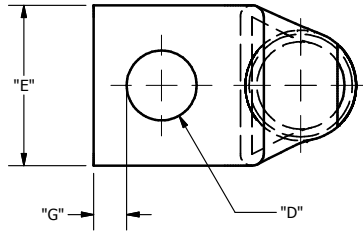
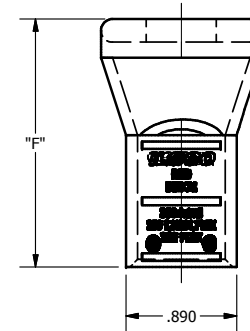
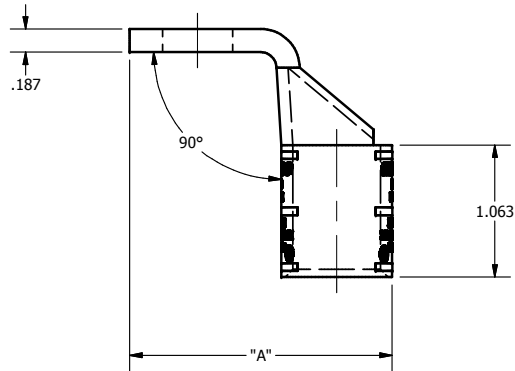


SCREW: NONE	MATERIAL: COPPER	REV: G	 <small>ILSCO CORPORATION</small> 800-776-9775 www.ilSCO.com
CAT. NO.: SEE CHART	PLATING: EL-TIN	DRAWN BY:DW SCALE: NTS	
INFORMATION SHEET:FORM 157	MARKING: SEE CHART	DATE:6/3/2008 SIZE: B	
			DWG NO: Y1311-S-9
			SHEET: 1 OF 1



DETAIL C
INK MARK TOP & BOTTOM



CATALOG NUMBER	"A"	"D"	"E"	"F"	"G"	TANG MARKING
CSWB-350-14-9	1.930	0.281	1.291	2.057	0.180	UL, ILSCO, CSA, CSWB-350-14-9, 1/4, 350 kcmil, 250 I,K,M, 262 FLEX, DIE 71
CSWB-350-12-9	2.305	0.562	1.291	2.057	0.265	UL, ILSCO, CSA, CSWB-350-12-9, 350 kcmil, 250 I,K,M, 262 FLEX, DIE 71
CSWB-350-58-9	2.492	0.656	1.291	2.057	0.343	UL, ILSCO, CSA, CSWB-350-58-9, 5/8, 350 kcmil, 250 I,K,M, 262 FLEX, DIE 71
CSWB-350-34-9	2.742	0.781	1.291	2.057	0.359	UL, ILSCO, CSA, CSWB-350-34-9, 3/4, 350 kcmil, 250 I,K,M, 262 FLEX, DIE 71
CSWB-350-78-9	2.992	0.906	1.291	2.057	0.437	UL, ILSCO, CSA, CSWB-350-78-9, 7/8, 350 kcmil, 250 I,K,M, 262 FLEX, DIE 71
CSWB-350-38-9	1.930	0.406	1.291	2.057	0.211	UL, ILSCO, CSA, CSWB-350-38-9, 3/8, 350 kcmil, 250 I,K,M, 262 FLEX, DIE 71
CSWB-350-516-9	1.930	0.343	1.291	2.057	0.180	UL, ILSCO, CSA, CSWB-350-516-9, 5/16, 350 kcmil, 250 I,K,M, 262 FLEX, DIE 71

THE INFORMATION CONTAINED WITHIN THIS DOCUMENT IS PROPRIETARY TO ILSCO AND MAY NOT BE DISCLOSED WITHOUT PRIOR WRITTEN CONSENT