
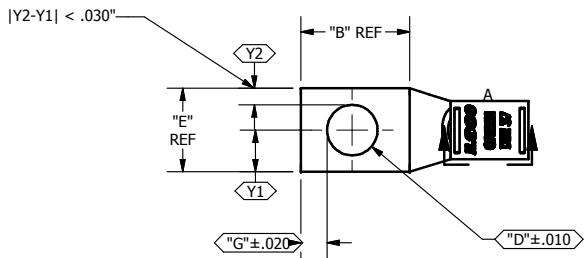


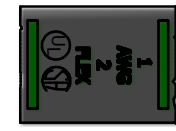
SCREW: N/A	MATERIAL: L136025, CDA-122 CU	CELL: CSP	TOLERANCES-UNLESS OTHERWISE SPECIFIED 2 PL. DEC. ±.015 TRUE C.L. ±.015 3 PL. DEC. ±.015 ANGLES ±1	DWG. NO. Y0611-S	
CAT. NO.: SEE CHART	PLATING: EL-TIN	STUFFER SHT.: FORM 157	SCALE: 1:1	SHEET 1 OF 1	
MASS: N/A	MARKING: SEE CHART		DATE: 7/19/2007	SIZE: B	
SURFACE AREA:					

REV.	DESCRIPTION
I	

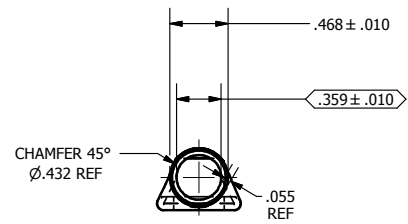
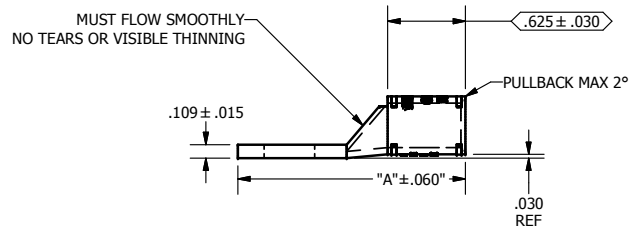
Cat #: SEE CHART FOR COMPLETE Cat #



DETAIL A, SCALE 2 : 1  
TOP INK MARKING  
INK COLOR: GREEN  
PER SPEC #: F921



DETAIL B  
SCALE 2 : 1  
BOTTOM INK MARKING



PART NUMBER	CATALOG NUMBER	"A"	"B"	"C"	"D"	"E"	"G"	SAWCUT LENGTH	TANG MARKING
Y0611C33T	CSWS-1-10	1.517	0.562	0.000	0.219	0.673	0.148	1.579	ILSCO, C-1-10, 1 AWG, 2 FLEX, DIE 37, UL, CSA
Y0611C36T	CSWS-1-14	1.830	0.875	0.000	0.281	0.673	0.180	1.892	ILSCO, CSWS-1-14, 1 AWG, 2 FLEX, DIE 37, UL, CSA
Y0611C47T	CSWS-1-516	1.830	0.875	0.000	0.343	0.673	0.180	1.892	ILSCO, CSWS-1-516, 1 AWG, 2 FLEX, DIE 37, UL, CSA
Y0611C46T	CSWS-1-38	1.830	0.875	0.000	0.406	0.673	0.211	1.892	ILSCO, CSWS-1-38, 1 AWG, 2 FLEX, UL, CSA
Y0611C42T	CSWS-1-12	2.205	1.250	0.000	0.562	.739	0.265	2.267	ILSCO, CSWS-1-12, 1 AWG, 2 FLEX, DIE 37, UL, CSA