



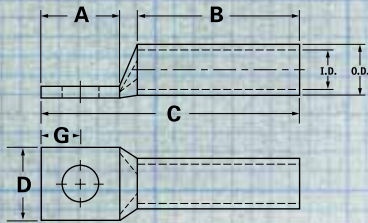
SureCrimp[®] Copper Compression Lugs - Standard Barrel 1 Hole, w/Sight Hole - Conductor Range: 1/0 - 400kcmil



TYPE CSWS

Features

- Manufactured from high strength seamless copper tubing.
- Electro-Tin plated.
- Maximum conductivity and excellent crimping characteristics.
- Chamfered entry.
- Color coded.
- UL 486A 90°C Listed and CSA Certified for 600 Volts.
- If proper high voltage spacing and insulation techniques are used, may be used for high voltage applications up to 35KV.
- For Copper conductor only.
- IlSCO connectors are UL Listed and CSA Certified with ILSCO and other Manufacturers' tools.+
- UL File E6207



Catalog Number	Wire Size	Alt Wire Size	Expanded* Wire Range	Bolt Size	Stud Hole Dia.	Dimensions					Die Color Code	Die Index	O.D.	I.D.
						A	B	C	D	G				
CSWS-1/0-10	1/0 AWG	#1 FLEX	1/0-6 AWG	10	0.219	0.562	0.750	1.668	0.738	0.258	Pink	I-42	0.515	0.390
CSWS-1/0-14	1/0 AWG	#1 FLEX	1/0-6 AWG	1/4	0.281	0.875	0.750	1.981	0.738	0.320	Pink	I-42	0.515	0.390
CSWS-1/0-516	1/0 AWG	#1 FLEX	1/0-6 AWG	5/16	0.343	0.875	0.750	1.981	0.738	0.352	Pink	I-42	0.515	0.390
CSWS-1/0-38	1/0 AWG	#1 FLEX	1/0-6 AWG	3/8	0.406	0.875	0.750	1.981	0.738	0.414	Pink	I-42	0.515	0.390
CSWS-1/0-12	1/0 AWG	#1 FLEX	1/0-6 AWG	1/2	0.562	1.250	0.750	2.356	0.738	0.546	Pink	I-42	0.515	0.390
CSWS-2/0-10	2/0 AWG	1/0 FLEX	2/0-4 AWG	10	0.219	0.562	0.750	1.708	0.811	0.258	Black	I-45	0.562	0.437
CSWS-2/0-14	2/0 AWG	1/0 FLEX	2/0-4 AWG	1/4	0.281	0.875	0.750	2.021	0.811	0.320	Black	I-45	0.562	0.437
CSWS-2/0-516	2/0 AWG	1/0 FLEX	2/0-4 AWG	5/16	0.343	0.875	0.750	2.021	0.811	0.352	Black	I-45	0.562	0.437
CSWS-2/0-38	2/0 AWG	1/0 FLEX	2/0-4 AWG	3/8	0.406	0.875	0.750	2.021	0.811	0.414	Black	I-45	0.562	0.437
CSWS-2/0-12	2/0 AWG	1/0 FLEX	2/0-4 AWG	1/2	0.562	1.250	0.750	2.396	0.811	0.546	Black	I-45	0.562	0.437
CSWS-3/0-10	3/0 AWG	2/0 FLEX	3/0-2 AWG	10	0.219	0.562	0.750	1.751	0.885	0.258	Orange	I-50	0.609	0.484
CSWS-3/0-14	3/0 AWG	2/0 FLEX	3/0-2 AWG	1/4	0.281	0.875	0.750	2.064	0.885	0.320	Orange	I-50	0.609	0.484
CSWS-3/0-516	3/0 AWG	2/0 FLEX	3/0-2 AWG	5/16	0.343	0.875	0.750	2.064	0.885	0.352	Orange	I-50	0.609	0.484
CSWS-3/0-38	3/0 AWG	2/0 FLEX	3/0-2 AWG	3/8	0.406	0.875	0.750	2.064	0.885	0.414	Orange	I-50	0.609	0.484
CSWS-3/0-12	3/0 AWG	2/0 FLEX	3/0-2 AWG	1/2	0.562	1.250	0.750	2.439	0.885	0.546	Orange	I-50	0.609	0.484
CSWS-4/0-14	4/0 AWG	3/0 FLEX	4/0-1 AWG	1/4	0.281	0.875	0.875	2.241	0.999	0.320	Purple	I-54	0.687	0.546
CSWS-4/0-516	4/0 AWG	3/0 FLEX	4/0-1 AWG	5/16	0.343	0.875	0.875	2.241	0.999	0.352	Purple	I-54	0.687	0.546
CSWS-4/0-38	4/0 AWG	3/0 FLEX	4/0-1 AWG	3/8	0.406	0.875	0.875	2.241	0.999	0.414	Purple	I-54	0.687	0.546
CSWS-4/0-12	4/0 AWG	3/0 FLEX	4/0-1 AWG	1/2	0.562	1.250	0.875	2.616	0.999	0.546	Purple	I-54	0.687	0.546
CSWS-250-516	250kcmil	4/0 FLEX	250kcmil - 1/0 AWG	5/16	0.343	0.875	1.063	2.469	1.088	0.352	Yellow	I-62	0.750	0.593
CSWS-250-38	250kcmil	4/0 FLEX	250kcmil - 1/0 AWG	3/8	0.406	0.875	1.063	2.469	1.088	0.414	Yellow	I-62	0.750	0.593
CSWS-250-12	250kcmil	4/0 FLEX	250kcmil - 1/0 AWG	1/2	0.562	1.250	1.063	2.844	1.088	0.546	Yellow	I-62	0.750	0.593
CSWS-300-516	300kcmil	250 G,H FLEX	300kcmil - 2/0 AWG	5/16	0.343	0.875	1.063	2.525	1.189	0.352	White	I-66	0.812	0.660
CSWS-300-38	300kcmil	250 G,H FLEX	300kcmil - 2/0 AWG	3/8	0.406	0.875	1.063	2.525	1.189	0.414	White	I-66	0.812	0.660
CSWS-300-12	300kcmil	250 G,H FLEX	300kcmil - 2/0 AWG	1/2	0.562	1.250	1.063	2.900	1.189	0.546	White	I-66	0.812	0.660
CSWS-300-58	300kcmil	250 G,H FLEX	300kcmil - 2/0 AWG	5/8	0.656	1.437	1.063	3.087	1.189	0.671	White	I-66	0.812	0.660
CSWS-350-38	350kcmil	250 I,K,M FLEX 262.2 DLO	350kcmil - 3/0 AWG	3/8	0.406	0.875	1.063	2.561	1.291	0.414	Red	I-71	0.890	0.703
CSWS-350-12	350kcmil	250 I,K,M FLEX 262.2 DLO	350kcmil - 3/0 AWG	1/2	0.562	1.250	1.063	2.936	1.291	0.546	Red	I-71	0.890	0.703
CSWS-350-58	350kcmil	250 I,K,M FLEX 262.2 DLO	350kcmil - 3/0 AWG	5/8	0.656	1.437	1.063	3.123	1.291	0.671	Red	I-71	0.890	0.703
CSWS-400-38	400kcmil	300 G,H,I,K,M FLEX 313.1 DLO	400kcmil - 4/0 AWG	3/8	0.406	0.875	1.188	2.730	1.365	0.414	Blue	I-76	0.937	0.750
CSWS-400-12	400kcmil	300 G,H,I,K,M FLEX 313.1 DLO	400kcmil - 4/0 AWG	1/2	0.562	1.250	1.188	3.105	1.365	0.546	Blue	I-76	0.937	0.750
CSWS-400-58	400kcmil	300 G,H,I,K,M FLEX 313.1 DLO	400kcmil - 4/0 AWG	5/8	0.656	1.437	1.188	3.292	1.365	0.671	Blue	I-76	0.937	0.750

* When installed with specified dieless tools