

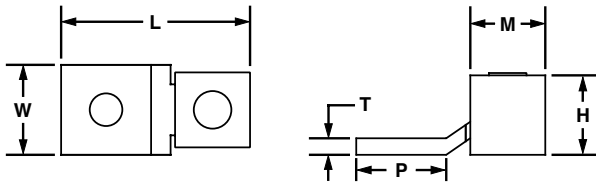


One-Hole, Single Piece, Straight Fixed Tongue, Tin-Plated

For Use with Stranded Copper Code Conductors

Type CXS-T

- Made from a single piece of high strength electrolytic copper to provide premium electrical and mechanical performance
- Patented one piece design. Provides premium electrical and mechanical
- Wide wire range-taking capability minimizes inventory requirements
- Serrations incorporated in barrel of connector to provide premium wire pullout strength of wire termination
- Plated, fillister head, steel set screw provides high strength, durable electrical contact between conductor and connector
- cULus Listed for use for up to 600 V and temperature rated to 90°C where applicable
- Tin-plated to inhibit corrosion



Part Number	Copper Conductor Size Range	Stud Hole Size (in.)	Figure Dimensions (in.)					Std. Pkg. Qty.
			L	W	H	T	M	
CXS35-36T-C	14 AWG - 6 AWG	3/16	1.08	0.38	0.39	0.05	0.47	100
CXS70-14T-C	14 AWG - 4 AWG	1/4	1.28	0.5	0.5	0.06	0.53	100
CXS125-14T-Q	4 AWG - 1/0 AWG	1/4	1.6	0.62	0.73	0.09	0.65	25
CXS125-56T-Q	4 AWG - 1/0 AWG	5/16	1.6	0.62	0.73	0.09	0.65	25

A.
System
Overview

B1.
Cable
Ties

B2.
Cable
Accessories

B3.
Stainless
Steel Cable
Ties &
Accessories

C1.
Wiring
Duct

C2.
Abrasion
Protection

C3.
Cable
Management

D1.
Terminals

D2.
Power
Connectors

D3.
Grounding
Connectors

E1.
Labeling
Systems

E2.
Labels

E3.
Pre-Printed
&
Write-On
Markers

E4.
Permanent
Identification

E5.
Lockout/
Tagout &
Safety
Solutions

F.
Keystone
Cabling
Systems

G.
Part
Number
Index