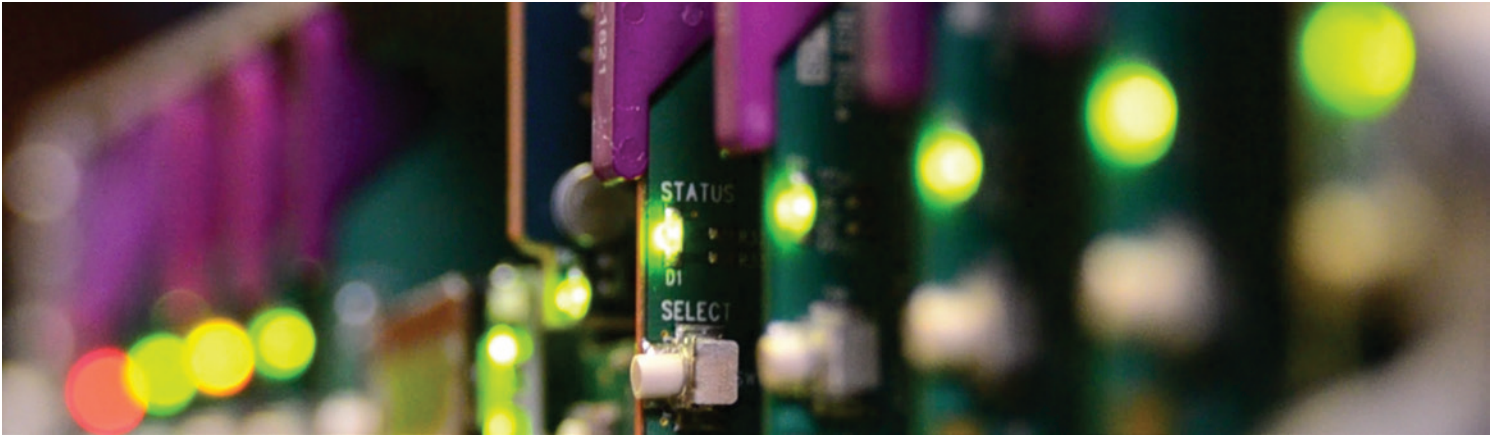


Densité 2 Frame

20 Multiformat Cards in 2 RU



Space-saving, modular platform for advanced signal processing.

The 2 RU Densité 2 Frame from Grass Valley, a Belden Brand, can simultaneously process 3G, HD, SD and analog video, as well as AES and analog audio. Its front-opening frame features dual hot-swappable power supplies (PSUs) and fans. Modules for the air-cooled frame are also hot swappable, and replacement modules can be configured automatically. All modules, redundant PSUs and fans are monitored to deliver status via GPI or an optional Ethernet port. Front panel multicolor LEDs provide status reporting, while a controller card allows card adjustments from the front panel.

Remote Control Options

Multiple Densité frames can be controlled by an advanced remote control panel, and by a standalone PC-based control application called iControl Solo, which offers control direct from the desktop. More advanced, highly graphical remote control over IP is provided by iControl Playout.

Densité 2 Frame 20 Multiformat Cards in 2 RU

KEY FEATURES

- Multiple video and audio formats can be fitted in a single chassis
- Up to 20 cards in a single 2 RU frame
- Easy configuration by front panel or remotely via Ethernet
- Remote control by RCP-200 advanced control panel and by PC-based iControl Solo GUI (requires CPU-ETH2 option)
- Hot swappable power supply, with optional redundant power supply
- Can be stacked without additional cooling spaces
- Redundant Ethernet connection with DENSITE-CPU-ETH2 option
- Full network link redundancy using Channel bonding, with DENSITE-CPU-ETH2-OPT-LNK option

SPECIFICATIONS

Mechanical

Dimensions:

2 RU x 485 mm (19 in.) W x 286 mm
(11.25 in.) D with connectors

Weight:

3.2 kg (7 lbs.) 1 PSU, with no modules installed

Power

Input range:

AC 96-264V, 50-60 Hz

Rating:

150W max

Monitoring

Alarm:

GPI contact

Cooling

Fans:

2 on frame, 1 on each PSU

Sound pressure level:

8.9 dBA (1m in front of unit)

Operating temp. range:

0° - 40° C (32° - 104° F)

ORDERING

Densité 2

Housing frame with (1) PSU (AC in), (1) basic controller with front control panel, blank rear panels

Note: Rear panels must be specified and ordered with appropriate card.

Options

Densité-CPU-ETH2

Densité-PSU-AC

Densité-CPU-ETH2-OPT-LNK

Description

Controller card with redundant Ethernet ports

Redundant PSU

Full link redundancy using channel bonding on Densité-CPU-ETH2



GVB-1-0010A-EN-DS

WWW.GRASSVALLEY.COM

Join the Conversation at [GrassValleyLive](#) on Facebook, Twitter, YouTube and [Grass Valley - A Belden Brand](#) on LinkedIn.



Belden, Belden Sending All The Right Signals and the Belden logo are trademarks or registered trademarks of Belden Inc. or its affiliated companies in the United States and other jurisdictions. Grass Valley and Densité are trademarks or registered trademarks of Grass Valley, Belden Inc., Grass Valley and other parties may also have trademark rights in other terms used herein.

Copyright © 2014 Grass Valley. All rights reserved. Specifications subject to change without notice.