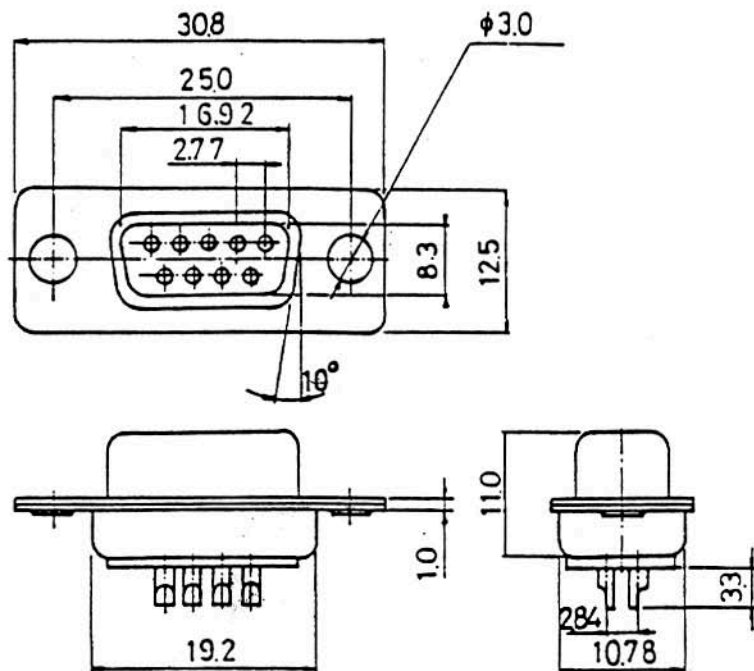


PARTS NO : DS-9P

UNIT : m/m



SPECIFICATION: MATERIAL & FINISH SHELL:  
STEEL  
ZINC PLATED OR TIN PLATED

PIN CONTACT: GRASS  
GOLD PLATED OVER NICKEL

SOCKET CONTACT: PHOSPHOR BRONZE  
GOLD PLATED OVER NICKEL

INSULATOR: PBT & GLASS-FIBRE  
REINFORCED UL-94V-0

CURRENT RATING: 5AMP.

DIELECTRIC STRENGTH: 1000V FOR ONE MINUTE

INSULATOR RESISTANCE: 1000M MIN. AT 500V DC

TEMPERATURE: -55 ---- +105



**PAN PACIFIC  
ENTERPRISES CO.**

11661 MARTENS RIVER CIRCLE, UNIT "N",  
FOUNTAIN VALLEY, CA 92708  
PHONE: (714)540-4021  
FAX: 714-540-4827