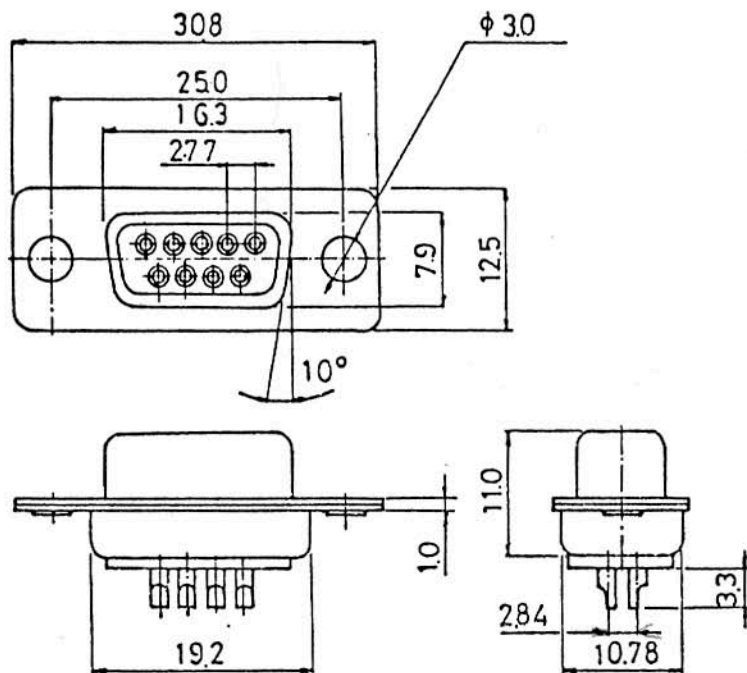


PARTS NO. : DS-9S

UNIT : m/m



SPECIFICATION: MATERIAL & FINISH SHELL
ZINC PLATED OR TIN PLATED

TIN CONTACT: GRASS
GOLD PLATED OVER NICKEL

SOCKET CONTACT: PHOSPHOR BRONZE
GOLD PLATED OVER NICKEL

INSULATOR: PBT & GLASS-FIBRE
REINFORCED UL-94V-0

CURRENT RATING: 5AMP.

DIELECTRIC STRENGTH: 1000V FOR ONE MIN.

INSULATOR RESISTANCE: 1000M MIN. AT 500V DC

TEMPERATURE: -55 -- +105



PAN PACIFIC
ENTERPRISES CO.

11661 MARTENS RIVER CIRCLE, UNIT "N".
FOUNTAIN VALLEY, CA 92708
PHONE: (714)540-4021
FAX: 714-540-4827