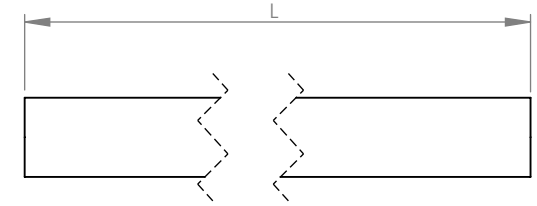
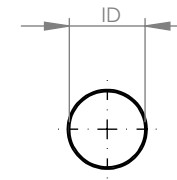


4

3

2

1



Product number	Product name	INSULATION	COLOR	SHRINK TUBE INSIDE DIA.	CUT LENGTH (INCH)
24-1170	tubing,HS,0.15"x3/64"dia	POLYOLEFIN	BLACK	.047	.15
24-1173	tubing,HS,0.20"x3/64"dia	POLYOLEFIN	BLACK	.047	.20
24-1175	tubing,HS,0.25"x3/64"dia	POLYOLEFIN	BLACK	.047	.25
24-1180	tubing,HS,0.40"x3/64"dia	POLYOLEFIN	BLACK	.047	.40
24-1190	tubing,HS,0.60"x3/64"dia	POLYOLEFIN	BLACK	.047	.60
24-1195	tubing,HS,0.50"x3/64"dia	POLYOLEFIN	BLACK	.047	.50
24-1200	tubing,HS,0.71"x3/64"dia	POLYOLEFIN	BLACK	.047	.71
24-1210	tubing,HS,0.75"x3/64"dia	POLYOLEFIN	BLACK	.047	.75
24-1220	tubing,HS,0.8"x3/64"dia	POLYOLEFIN	BLACK	.047	.80
24-1230	tubing,HS,0.85"x3/64"dia	POLYOLEFIN	BLACK	.047	.850
24-1240	tubing,HS,0.90"x3/64"dia	POLYOLEFIN	BLACK	.047	.90
24-1250	tubing,HS,1.05"x3/64"dia	POLYOLEFIN	BLACK	.047	1.05
24-1260	tubing,HS,1.10"x3/64"dia	POLYOLEFIN	BLACK	.047	1.10
24-1270	tubing,HS,1.13"x3/64"dia	POLYOLEFIN	BLACK	.047	1.13
24-1280	tubing,HS,1.20"x3/64"dia	POLYOLEFIN	BLACK	.047	1.20
24-1285	tubing,HS,1.30"x3/64"dia	POLYOLEFIN	BLACK	.047	1.30
24-1290	tubing,HS,1.40"x3/64"dia	POLYOLEFIN	BLACK	.047	1.40
24-1296	tubing,HS,1.80"x3/64"dia	POLYOLEFIN	BLACK	.047	1.80
24-1297	tubing,HS,1.70"x3/64"dia	POLYOLEFIN	BLACK	.047	1.70
24-1298	tubing,HS,1.90"x3/64"dia	POLYOLEFIN	BLACK	.047	1.90
24-1305	tubing,HS,2.30"x3/64"dia	POLYOLEFIN	BLACK	.047	2.30
24-1320	tubing,HS,0.950"x3/64"dia	POLYOLEFIN	BLACK	.047	.95
24-1330	tubing,HS,1.600"x3/64"dia	POLYOLEFIN	BLACK	.047	1.60
24-1335	tubing,HS,1.650"x3/64"dia	POLYOLEFIN	BLACK	.047	1.65
24-1834	tubing,HS,1.50"x1/16"diam	POLYOLEFIN	BLACK	.063	1.50

- NOTES:
 1. Material: Polyolefin Heat Shrink Tubing
 2. Length tolerance: +/- 0.030"

REV.	DATE	DESCRIPTION	BY
A	11/08/23	INITIAL RELEASE	TP

DESCRIPTION:
 1211524.SLDPRT

PROPRIETARY AND CONFIDENTIAL
 THE CONTENTS OF THIS DRAWING AND ALL INFORMATION AND DATA CONTAINED THEREON ARE CONFIDENTIAL AND CONSTITUTE THE EXCLUSIVE PROPERTY OF AMERICAN OUTDOOR BRANDS INC. THE DRAWING AND ITS CONTENTS MAY NOT BE MADE PUBLIC IN ANY MANNER, DISTRIBUTED OR LOANED TO OTHERS, OR REPRODUCED OR COPIED EITHER WHOLE OR IN PART WITHOUT THE PRIOR WRITTEN CONSENT OF AMERICAN OUTDOOR BRANDS INC.

DIM AND TOL PER ASME Y14.5-2018
 UNLESS OTHERWISE SPECIFIED DIMENSIONS ARE IN MM AND TOLERANCES FOR:
 .X ±.750 X ±1.0"
 .X ±.500 X ±.5"
 .XX ±.250



MATERIAL:
 FINISH:
 WEIGHT Kg:
 VOLUME MM³:

SIZE	DWG. NO.	REV.
B	1211524	A

SCALE:1:2 DO NOT SCALE DRAWING SHEET 1 OF 1

4

3

2

1