

# Blank Panels

accessories

Blank panels cover open areas on an installed rack face, providing a clean, professional appearance.

## BL Series

- Highest Aesthetics
- Aluminum, Flanged Style
- Lightweight, Easy to Machine
- Available in 1 Through 4 Space Sizes
- 1/2 and 1/3 Space Blank Panels Also Available
- Black Brushed and Anodized Finish

## EB/FEB Series

- Economical Steel Blank Panel
- Flat (FEB) or Flanged (EB) Styles
- 1/2 and 1/3 Space Blank Panels Also Available (EB style only)
- Available in 1 Through 6 Space Sizes
- Durable Black Powder Coat Finish

## HBL Series

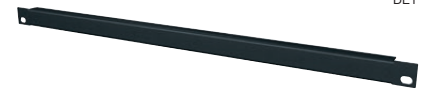
- Highest Aesthetics
- Aluminum
- Lightweight, Easy to Machine
- Available in 1 Through 4 Space Sizes
- Black Brushed and Anodized

## PBL Series

- Lightweight, Easy to Machine
- Aluminum
- Flanged for Strength
- Available in 1 Through 4 Space Sizes
- Durable Black Powder Coat Finish
- Also available in 1/2 rack width (HRBL Series)



BL1



BL1/2



EB1-H



EB1/3



FEB1



HBL2



PBL-2



HRBL-2

what **great systems** are built on.™

A brand of **legrand**

**Middle Atlantic Products**

[middleatlantic.com](http://middleatlantic.com) | [middleatlantic.ca](http://middleatlantic.ca)

96-001-1 / rev f / 7-20-18

# Blank Panels

accessories

Blank panels cover open areas on an installed rack face, providing a clean, professional appearance.

PHBL Series

- Lightweight, Easy to Machine
- Aluminum
- Flat Style
- Available in 1 Through 4 Space Sizes
- Durable Black Powder Coat Finish



PBL-2



PHBL-3

SB/WSB Series

- Heavy Duty
- Steel
- Flanged for Strength
- Available in 1 Through 6 Space Sizes (SB) and 1 Through 4 Space Sizes (WSB)
- Durable Textured Black Powder Coat Finish (SB), Wrinkle Black Powder Coat (WSB)



WSB3

specifications:

Blank panels shall be Middle Atlantic Products model # \_\_\_ (refer to chart). Blank panels shall be \_\_\_ rackspaces in height with a \_\_\_ finish (refer to chart). Blank panels shall be \_\_\_" wide (refer to chart). Blank panels shall be constructed of aluminum (BL, PBL, HRBL, HBL, PHBL), or steel (FEB, EB, SB, WSB). Blank panels shall be RoHS EU Directive 2002/95/EC compliant. Blank panels shall be manufactured by an ISO 9001 and ISO 14001 registered company. Blank panels shall be warranted to be free from defects in material or workmanship under normal use and conditions for the lifetime of the panel.

EIA/TIA COMPLIANT



PRODUCT CERTIFIED FOR  
LOW CHEMICAL EMISSIONS  
UL.COM/GG  
UL 2818

what **great systems** are built on.™

A brand of **legrand**



**Middle Atlantic Products**

middleatlantic.com | middleatlantic.ca

# Blank Panels

basic dimensions



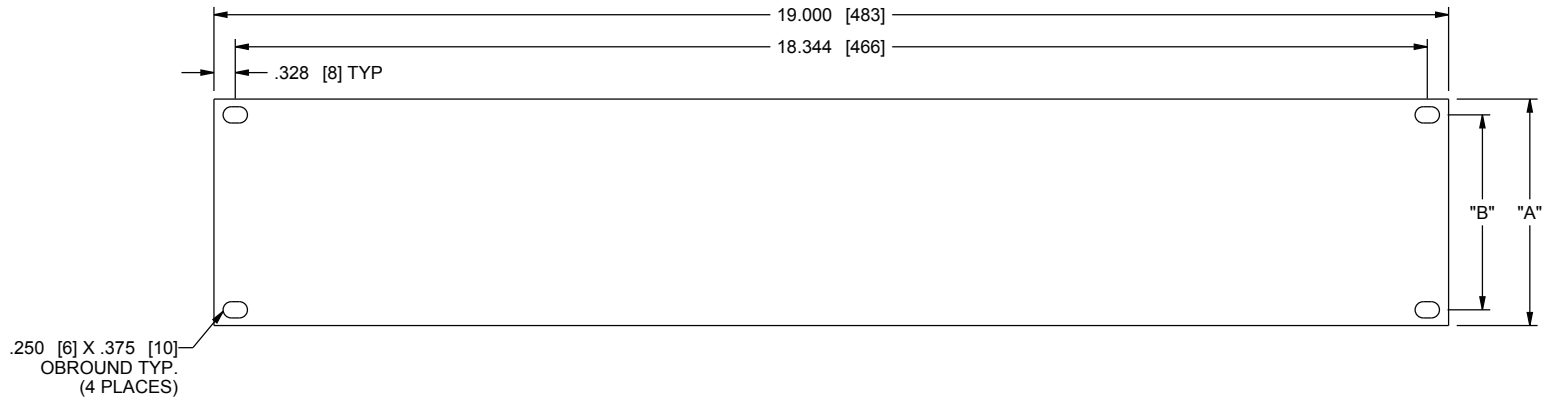
| PARTS                     | DIM "A"      | DIM "B"    | DIM "C"    | DIM "D"      | DIM "E"      |
|---------------------------|--------------|------------|------------|--------------|--------------|
| BL1/3, EB1/3              | 0.583 [15]   | N/A        | 19 [483]   | 18.344 [466] | 17.374 [441] |
| BL1/2, EB1/2              | 0.875 [22]   | N/A        | 19 [483]   | 18.344 [466] | 17.374 [441] |
| BL1, PBL1, EB1, SB1, WSB1 | 1.718 [44]   | 1.25 [32]  | 19 [483]   | 18.344 [466] | 17.374 [441] |
| BL2, PBL2, EB2, SB2, WSB2 | 3.468 [88]   | 3.00 [76]  | 19 [483]   | 18.344 [466] | 17.374 [441] |
| BL3, PBL3, EB3, SB3, WSB3 | 5.218 [133]  | 2.25 [57]  | 19 [483]   | 18.344 [466] | 17.374 [441] |
| BL4, PBL4, EB4, SB4, WSB4 | 6.968 [177]  | 4.00 [102] | 19 [483]   | 18.344 [466] | 17.374 [441] |
| EB5, SB5                  | 8.718 [221]  | 5.75 [146] | 19 [483]   | 18.344 [466] | 17.374 [441] |
| EB6, SB6                  | 10.468 [266] | 7.50 [191] | 19 [483]   | 18.344 [466] | 17.374 [441] |
| HRBL1                     | 1.718 [44]   | 1.25 [32]  | 10.4 [264] | 9.744 [247]  | 8.774 [223]  |
| HRBL2                     | 3.468 [88]   | 3.00 [76]  | 10.4 [264] | 9.744 [247]  | 8.774 [223]  |

| PARTS  | HRBL              | BL                       | PBL               | EB                | SB                         | WSB                       |
|--------|-------------------|--------------------------|-------------------|-------------------|----------------------------|---------------------------|
| FINISH | BLACK POWDER COAT | BLACK BRUSHED & ANODIZED | BLACK POWDER COAT | BLACK POWDER COAT | TEXTURED BLACK POWDER COAT | WRINKLE BLACK POWDER COAT |

NOTE:  
DIMENSION FORMAT SHOWN INCHES [MM]

# Blank Panels

basic dimensions



| PARTS             | DIM "A"      | DIM "B"    |
|-------------------|--------------|------------|
| HBL1, PHBL1, FEB1 | 1.735 [44]   | 1.25 [32]  |
| HBL2, PHBL2, FEB2 | 3.485 [89]   | 3.00 [76]  |
| HBL3, PHBL3, FEB3 | 5.235 [133]  | 2.25 [57]  |
| HBL4, PHBL4, FEB4 | 6.985 [177]  | 4.00 [10]  |
| HBL5, FEB5        | 8.735 [222]  | 5.75 [146] |
| HBL6, FEB6        | 10.485 [266] | 7.50 [191] |

| PARTS  | HBL                      | PHBL              | FEB               |
|--------|--------------------------|-------------------|-------------------|
| FINISH | BLACK BRUSHED & ANODIZED | BLACK POWDER COAT | BLACK POWDER COAT |

NOTE:  
DIMENSION FORMAT SHOWN INCHES [MM]