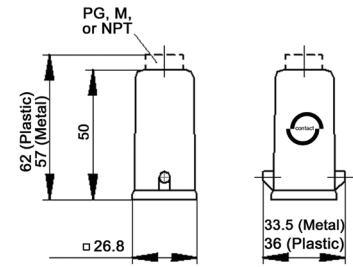
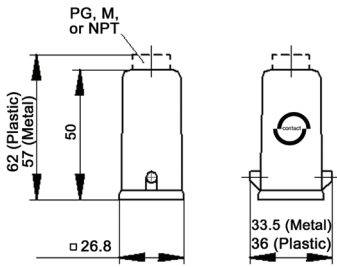


EPIC® HA 3/4 Hoods

Single Lever Bolts



All dimensions are in mm.

Technical Data

Specifications:	DIN 43652, DIN 50262 (metric)	Protection Class:	NEMA 4, NEMA 12, IP65
Temperature Range:	-40°C to +125°C	Material:	see table

PG	Size of Entry		Material	Part Number: Without Cable Gland			Part Number: With Cable Gland	
	NPT	Metric		PG	NPT	Metric	PG	Metric
Top Entry								
11	1/2"	20	Die-cast Zinc	10512100	105121NP	19512100	10426500	19426500
11	1/2"	20	Black Plastic	10425500	104255NP	19425500	10426700	—
11	1/2"	20	Gray Plastic	10426000	104260NP	19426000	10426400	—
Side Entry								
11	1/2"	20	Die-cast Zinc	10512300	105123NP	19512300	10427500	19427500
11	1/2"	20	Black Plastic	10427300	104273NP	19427300	10620600	—
11	1/2"	20	Gray Plastic	10427000	104270NP	19427000	10427100	—

Approvals



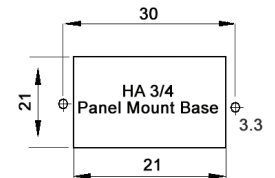
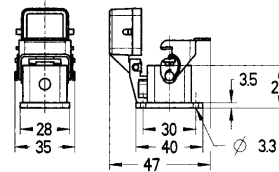
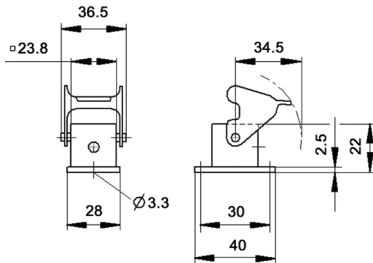
Complete the Installation



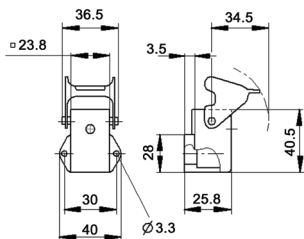
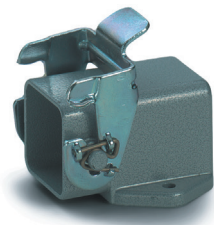
HA Dust Covers:
page 415

EPIC® HA 3/4 Panel Mount Bases

Single Lever



All dimensions are in mm.



Technical Data

Specifications:	DIN 43652, DIN 50262 (metric)
Temperature Range:	-40°C to +125°C
Protection Class:	NEMA 4, NEMA 12, IP65
Material:	see table

Complete the Installation



Dust Covers:
page 415

Approvals

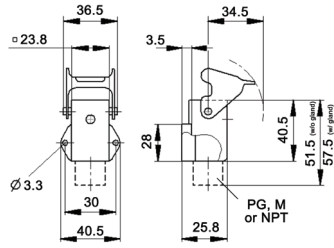


Description	Die-cast Zinc	Part Number Black Plastic	Gray Plastic
Panel Mount Base	10422500	10422200	10422000
Panel Mount Base with Dust Cover	44429015	—	—
Right-Angle Panel Mount Base	10423500	10423100	10423000

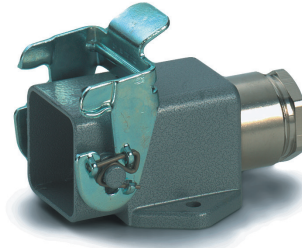
Photographs are not to scale and are not true representations of the products in question. For current information go to our website. If not otherwise specified, all values relating to the product are nominal values.

EPIC® HA 3/4 Surface Mount Bases

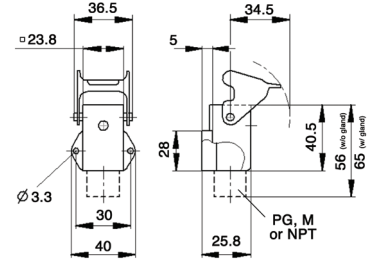
Single Lever



Die-cast Zinc



All dimensions are in mm.



Gray Plastic

Technical Data			
Specifications:	DIN 43652, DIN 50262 (metric)	Protection Class:	NEMA 4, NEMA 12, IP65
Temperature Range:	-40°C to +125°C	Material:	see table

PG	Size of Entry		Material	Part Number: Without Cable Gland			Part Number: With Cable Gland	
	NPT	Metric		PG	NPT	Metric	PG	Metric
11	1/2"	20	Die-cast Zinc	10512700	105127NP	19512700	10424500	19424500
11	1/2"	20	Gray Plastic	10424000	104240NP	—	10424200	19421900

Approvals



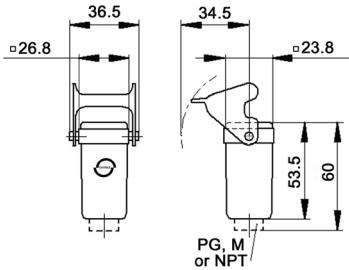
Complete the Installation



HA Dust Covers:
page 415

EPIC® HA 3/4 Cable Coupler Hoods

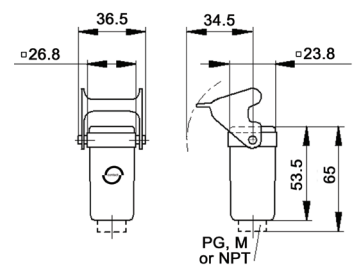
Single Lever



Die-cast Zinc



All dimensions are in mm.



Black or Gray Plastic

Technical Data			
Specifications:	DIN 43652, DIN 50262 (metric)	Protection Class:	NEMA 4, NEMA 12, IP65
Temperature Range:	-40°C to +125°C	Material:	see table

PG	Size of Entry		Material	Part Number: Without Cable Gland			With Cable Gland
	NPT	Metric		PG	NPT	Metric	PG
11	1/2"	20	Die-cast Zinc	10512900	105129NP	19512900	10429500
11	1/2"	20	Black Plastic	10429200	104292NP	19429200	10620300
11	1/2"	20	Gray Plastic	10429000	104290NP	19429000	10429100

Approvals



Complete the Installation



HA Dust Covers:
page 415

Photographs are not to scale and are not true representations of the products in question.
For current information go to our website. If not otherwise specified, all values relating to the product are nominal values.