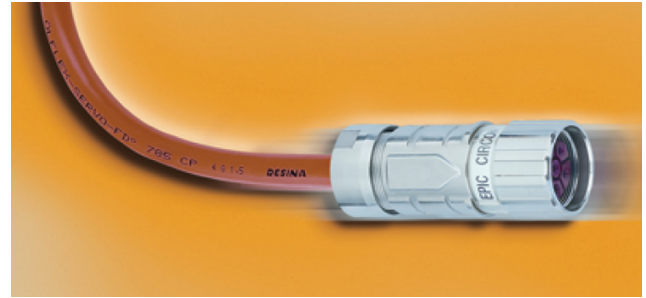
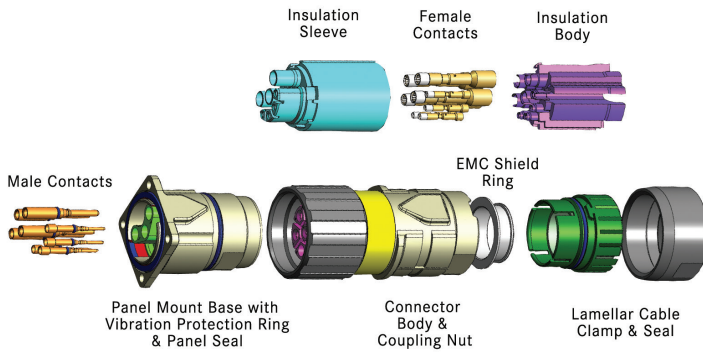


EPIC® CIRCON LS1 Series



The EPIC® CIRCON LS1 connectors have many inherent features which offer application advantages and provide significant benefits. These features make it one of the most application-friendly connectors available, and ensure quick and easy assembly, high reliability, and long uninterrupted service life in tough industrial environments.

Application Advantage

- Rugged nickel-plated, die-cast zinc body
- Positive vibration protection for use with motor drives and moving assemblies
- Integral EMC cable gland provides strain-relief, IP67/68 protection, and 360° shielding

Approvals



EPIC® CIRCON LS1 connectors are available in seven housing styles and two contact configurations. Common to all arrangements are a rugged nickel-plated zinc body, plastic contact insulation body and sleeve, and gold-plated electrical contacts (included with the connector part number). Cable-mounted arrangements also include an integral EMC shield ring, cable clamp, and seal. The figure above shows the general construction of these connectors.

These connectors are offered with two contact configurations. The 5+PE contact configuration for power distribution has 5 contacts plus ground, and is rated at 630V and 25A. For feedback and servo motor with brake applications, the 3+PE+4 contact configuration handles mixed power and signal requirements with 3 contacts plus ground, rated 630V and 26A, and 4 contacts rated 250V and 7A. When used in combination, they connect one flexible cable with another (cable coupler) or one flexible cable to fixed wiring on a machine (appliance coupler).

Technical Data

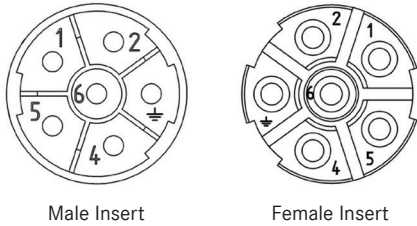
Number of Contacts:	5+PE, 3+PE+4	Wire Gauge (Crimp Termination):	
Temperature Range:	-25°C to +125°C	- 2 mm contacts:	
Rated Voltage:		- Styles A1, A3, G5:	20- 14 AWG (0.5-2.5 mm ²)
- UL:	600V	- Styles D, F, A6:	20- 12 AWG (0.5-4.0 mm ²)
- VDE:		- 1 mm contacts:	24- 18 AWG (0.14- 1.0 mm ²)
- 2 mm contacts:	630V	Cable Diameter:	7.5- 15.5 mm
- 1 mm contacts:	250V	- Styles D & F:	14- 17 mm (12 AWG contacts)
Rated Current:		Mating Cycles:	500
- 2 mm contacts:	25A (5+PE)	Materials:	
- 1 mm contacts:	26A (3+PE+4)	- Housing:	Nickel-plated die-cast zinc
Impulse Voltage:		- Insulation body:	PA, PBT, V-0 per UL 94
- 2 mm contacts:	6kV	- Contacts:	Gold-plated copper alloy
- 1 mm contacts:	4kV	- Gaskets & seals:	FPM
Protection Class:	IP67/68 (10h/1m)	Contact Resistance:	< 4 mΩ
- Style A3:	IP65	Approvals:	DIN EN 61984 cRUus #E75770

Photographs are not to scale and are not true representations of the products in question. For current information go to our website. If not otherwise specified, all values relating to the product are nominal values.

EPIC® CIRCON LS1 Series

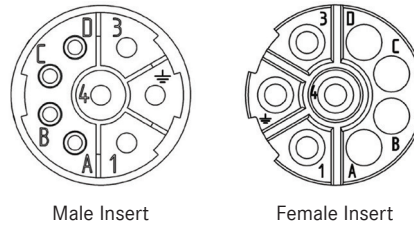
EPIC® CIRCON LS1 5+PE

View from contact side



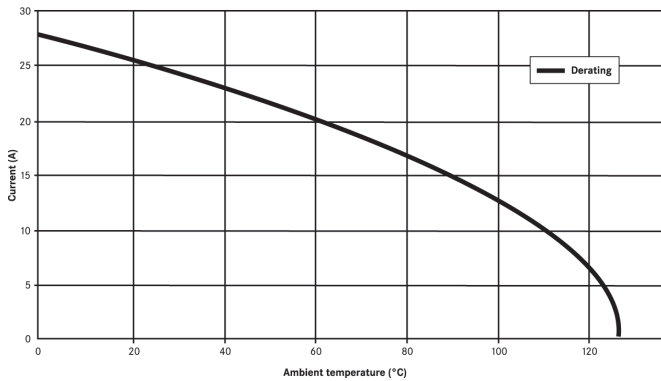
EPIC® CIRCON LS1 3+PE+4

View from contact side



Derating Curve

Basic and derating curve LS-1. 5+PE, 2,5 mm² Female hyper boloid



Contact Size		Max. Current according to UL	
mm ²	AWG	5+PE	3+PE+4
2 mm Contacts			
0.34	22	5A	5A
0.50	20	9A	9A
1.00	18	13A (11A*)	13A (11A*)
1.50	16	12A	12A
2.50	14	22A	22A
4.00	12	25A	26A
1 mm Contacts			
up to 0.14	up to 26	—	1A
1.00	18	—	7A

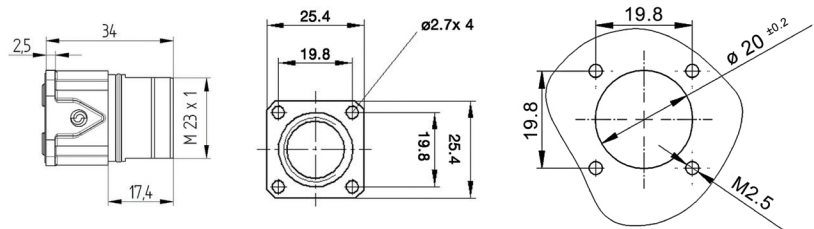
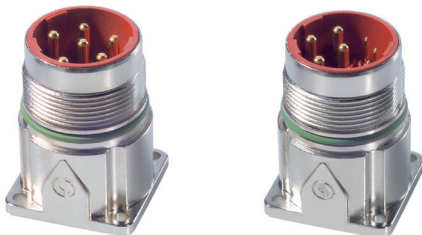
* cUR

EPIC® CIRCON LS1 Connector Style A1

Straight Panel Mount Inlet with Male Contacts

5+PE

3+PE+4



All dimensions are in mm.

Contact Configuration	Part Number
5+PE	76003000
3+PE+4	76004000

Complete the Installation



Crimp Tool:
11148000



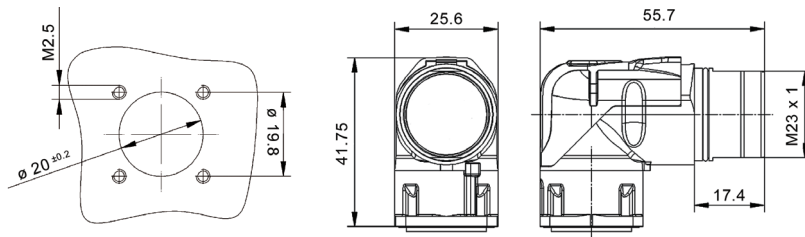
Locator:
11148300



Removal Tool:
1 mm contacts: 75017400
2 mm contacts: 75017500

Photographs are not to scale and are not true representations of the products in question. For current information go to our website. If not otherwise specified, all values relating to the product are nominal values.

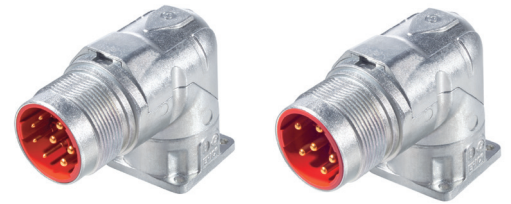
EPIC® CIRCON LS1 Connector Style A3 Angled Rotatable Panel Mount Inlet with Male Contacts






All dimensions are in mm.

3+PE+4

5+PE

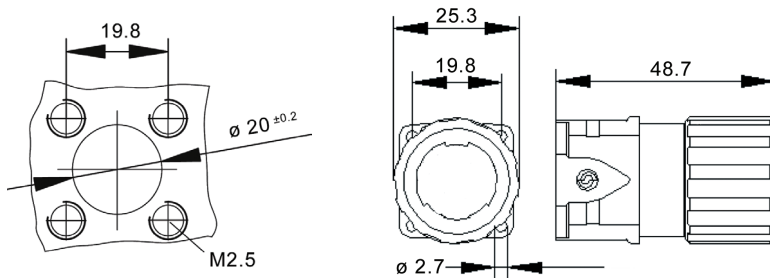


Complete the Installation

 Crimp Tool: 11148000
 Locator: 11148300
 Removal Tool:
 1 mm contacts: 75017400
 2 mm contacts: 75017500

Contact Configuration	Part Number
5+PE	24420058
3+PE+4	24420056

EPIC® CIRCON LS1 Connector Style A6 Panel Mount Receptacle with Female Contacts





All dimensions are in mm.

3+PE+4

5+PE



Complete the Installation

 Crimp Tool: 11148000
 Locator: 11148300

Contact Configuration	Part Number
5+PE	76083000
3+PE+4	76084000

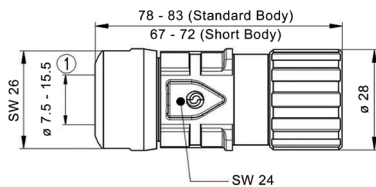
EPIC® CIRCON LS1 Connector Style D6 Cable Connector with Female Contacts

Short Body
3+PE+4

Short Body
5+PE

Standard Body
3+PE+4



Standard Body
5+PE



All dimensions are in mm.



Complete the Installation

 Crimp Tool: 11148000
 Locator: 11148300

Contact Configuration	Standard Body		Short Body
	22 - 14 AWG	12 AWG	
5+PE	76123000	44420091	76123100
3+PE+4	76124000	44420089	76124100

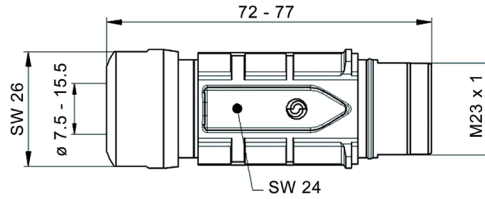
Photographs are not to scale and are not true representations of the products in question.
For current information go to our website. If not otherwise specified, all values relating to the product are nominal values.

EPIC® CIRCON LS1 Connector Style F6

Cable Coupler with Male Contacts

5+PE


3+PE+4




All dimensions are in mm.

Contact Configuration	Part Number up to 14 AWG	Part Number 12 AWG
5+PE	76133000	44420095
3+PE+4	76134000	44420093

Complete the Installation



Crimp Tool: 11148000



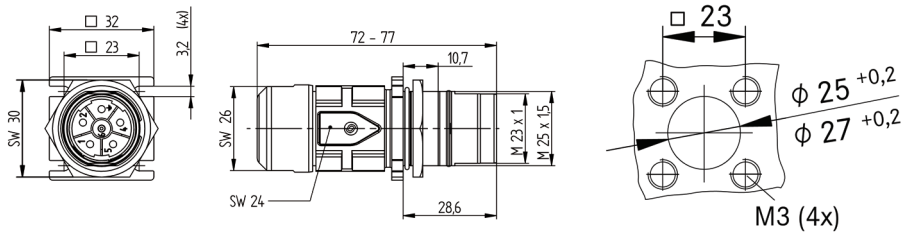
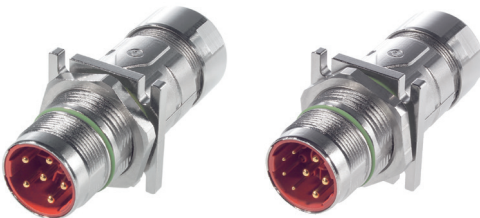
Locator: 11148300

EPIC® CIRCON LS1 Connector Style F7

Cable Coupler with Male Contacts

5+PE


3+PE+4




All dimensions are in mm.

Contact Configuration	Part Number
5+PE	76143000
3+PE+4	76144000

Complete the Installation



Crimp Tool: 11148000



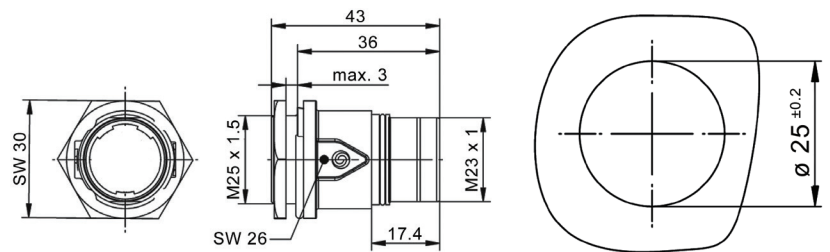
Locator: 11148300

EPIC® CIRCON LS1 Connector Style G5

Straight Panel Mount Inlet with Male Contacts & Locknut

5+PE


3+PE+4




All dimensions are in mm.

Contact Configuration	Part Number
5+PE	76153000
3+PE+4	76154000


Complete the Installation



Crimp Tool: 11148000



Locator: 11148300



Removal Tool:
1 mm contacts: 75017400
2 mm contacts: 75017500

Photographs are not to scale and are not true representations of the products in question. For current information go to our website. If not otherwise specified, all values relating to the product are nominal values.