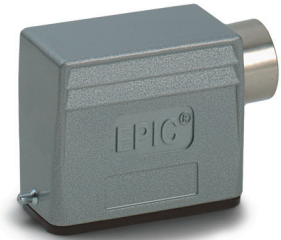
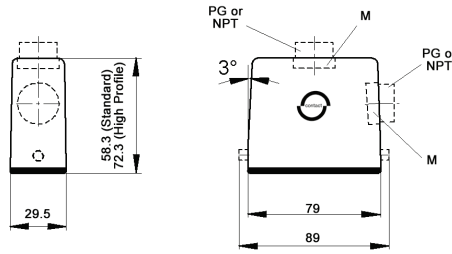


EPIC® HA 16 Standard & High Profile Hoods

Single Lever Bolts



All dimensions are in mm.

Technical Data

Specifications:	DIN 43652, DIN 50262 (metric)	Protection Class:	NEMA 4, NEMA 12, IP65
Temperature Range:	-40°C to +125°C	Material:	Powder-coated aluminum alloy

PG	Size of Entry		PG	Part Number			Complete the Installation: SKINTOP® Strain Relief, page 368			
	NPT	Metric		NPT	Metric*	Metric*	PG Nylon	PG Metal	Metric Nylon	Metric Metal
Standard Profile: Top Entry										
16	1/2"	20	105650	105650NP	19565000	53015040	52015740	53111020	53112020	
21	3/4"	25	105652	105652NP	19565300	53015050	52015750	53111030	53112030	
Standard Profile: Side Entry										
16	1/2"	20	105640	105640NP	19564000	53015040	52015740	53111020	53112020	
21	3/4"	25	105645	105645NP	19564500	53015050	52015750	53111030	53112030	
High Profile: Top Entry										
16	1/2"	20	704902	704902NP	79490200	53015040	52015740	53111020	53112020	
21	3/4"	25	704904	704904NP	79490400	53015050	52015750	53111030	53112030	
High Profile: Side Entry										
16	1/2"	20	704922	704922NP	79492200	53015040	52015740	53111020	53112020	
21	3/4"	25	704924	704924NP	79492400	53015050	52015750	53111030	53112030	

* Top entry metric and high profile metric hoods do not come with a neck

Approvals



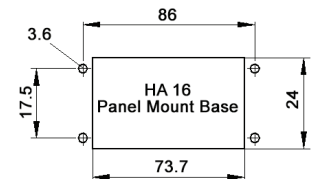
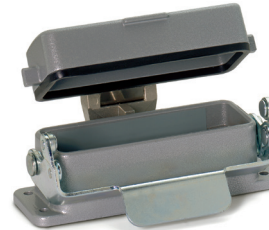
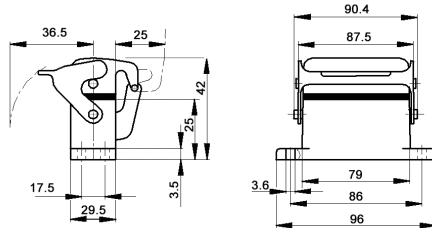
Complete the Installation



HA Dust Covers:
page 415

EPIC® HA 16 Panel Mount Bases

Single Lever



All dimensions are in mm.

Technical Data

Specifications:	DIN 43652, DIN 50262 (metric)	Protection Class:	NEMA 4, NEMA 12, IP65
Temperature Range:	-40°C to +125°C	Material:	Powder-coated aluminum alloy

Description	Part Number
Panel Mount Base	104620C0
Panel Mount Base with Dust Cover	704740C0

Complete the Installation



HA Dust Covers:
page 415

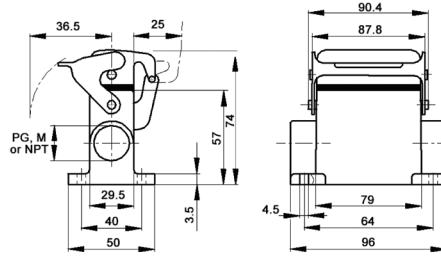
Approvals



Photographs are not to scale and are not true representations of the products in question. For current information go to our website. If not otherwise specified, all values relating to the product are nominal values.

EPIC® HA 16 Surface Mount Bases

Single Lever



All dimensions are in mm.



Technical Data				
Specifications:	DIN 43652, DIN 50262 (metric)	IP Protection Class:	NEMA 4, NEMA 12, IP65	
Temperature Range:	-40°C to +125°C	Material:	Powder-coated aluminum alloy	

PG	Size of Entry		PG	Part Number		Complete the Installation: SKINTOP® Strain Relief, page 368			
	NPT	Metric		NPT	Metric	PG Nylon	PG Metal	Metric Nylon	Metric Metal
2 Entries									
21	3/4"	25	105680	105680NP	19568000	53015050	52015750	53111030	53112030
1 Entry									
16	1/2"	20	105671	105671NP	19567100	53015040	52015740	53111020	53112020
21	3/4"	25	105670	105670NP	19567000	53015050	52015750	53111030	53112030
2 Entries with Dust Cover									
16	1/2"	20	704862	704862NP	79486200	53015040	52015740	53111020	53112020
—	—	25	—	—	79486400	—	—	53111030	53112030
1 Entry with Dust Cover									
16	1/2"	20	704852	704852NP	79485200	53015040	52015740	53111020	53112030
21	3/4"	25	704854	704854NP	79485400	53015050	52015750	53111030	53112030

Approvals



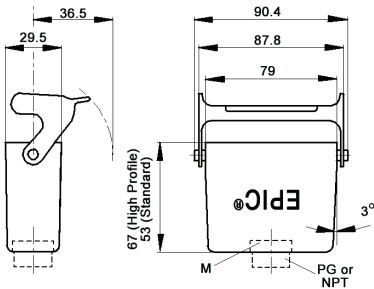
Complete the Installation



HA Dust Covers:
page 415

EPIC® HA 16 Cable Coupler Hoods

Single Lever



All dimensions are in mm.



Technical Data				
Specifications:	DIN 43652, DIN 50262 (metric)	IP Protection Class:	NEMA 4, NEMA 12, IP65	
Temperature Range:	-40°C to +125°C	Material:	Powder-coated aluminum alloy	

PG	Size of Entry		PG	Part Number		Complete the Installation: SKINTOP® Strain Relief, page 368			
	NPT	Metric		NPT	Metric*	PG Nylon	PG Metal	Metric Nylon	Metric Metal
Standard Profile									
16	1/2"	20	105630	105630NP	19563000	53015040	52015740	53111020	53112020
—	—	25	—	—	19563200	—	—	53111030	53112030
High Profile									
16	1/2"	20	704802	704802NP	79480200	53015040	52015740	53111020	53112020
21	3/4"	25	704804	704804NP	79480400	—	—	53111030	53112030

* Metric hoods do not come with a neck

Approvals



Complete the Installation



HA Dust Covers:
page 415

Photographs are not to scale and are not true representations of the products in question. For current information go to our website. If not otherwise specified, all values relating to the product are nominal values.