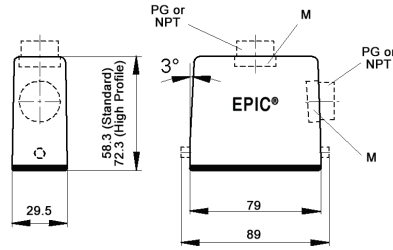
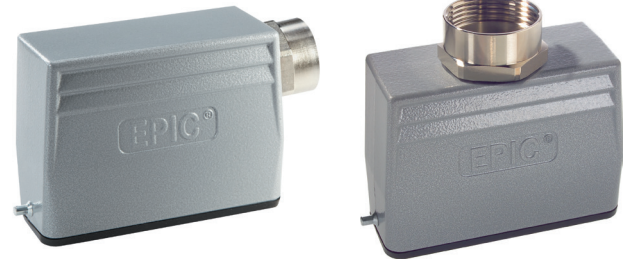


# EPIC® HA 16 Standard & High Profile Hoods

## Single Lever Bolts



all dimensions are in mm.



<b>Technical Data</b>				
<b>Specifications:</b>	DIN 43652, DIN 50262 (metric)	<b>IP Protection Class:</b>	NEMA 4, NEMA 12, IP65	
<b>Temperature Range:</b>	-40°C to +125°C	<b>Material:</b>	Powder-coated aluminum alloy	

PG	Size of Entry		PG	Part Number			Complete the Installation: SKINTOP® Strain Relief			
	NPT	Metric		NPT	Metric*	PG Plastic	PG Metal	Metric Plastic	Metric Metal	
<b>Standard Profile: Top Entry</b>										
16	1/2"	20	105650	105650NP	19565000	53015040	52015740	53111020	53112020	
21	3/4"	25	10565200	105652NP	19565300	53015050	52015750	53111030	53112030	
<b>Standard Profile: Side Entry</b>										
16	1/2"	20	105640	105640NP	19564000	53015040	52015740	53111020	53112020	
21	3/4"	25	105645	105645NP	19564500	53015050	52015750	53111030	53112030	
<b>High Profile: Top Entry</b>										
16	1/2"	20	704902	704902NP	79490200	53015040	52015740	53111020	53112020	
21	3/4"	25	704904	704904NP	79490400	53015050	52015750	53111030	53112030	
<b>High Profile: Side Entry</b>										
16	1/2"	20	704922	704922NP	79492200	53015040	52015740	53111020	53112020	
21	3/4"	25	704924	704924NP	79492400	53015050	52015750	53111030	53112030	

**Approvals**

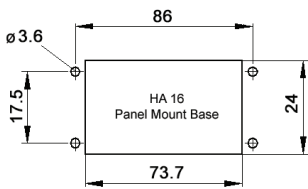
**Complete the Installation**

HA Dust Covers page 419

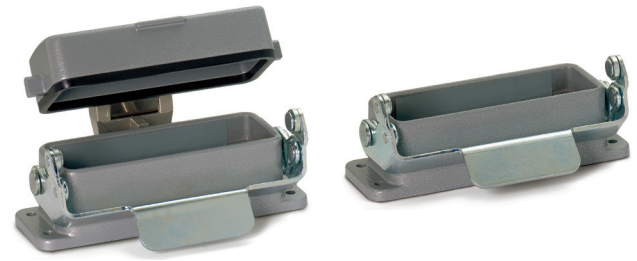
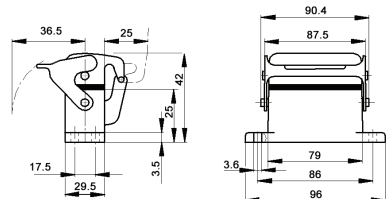
\* Top entry metric and high profile metric hoods do not come with a neck

# EPIC® HA 16 Panel Mount Bases

## Single Lever



all dimensions are in mm.



<b>Technical Data</b>				
<b>Specifications:</b>	DIN 43652, DIN 50262 (metric)	<b>IP Protection Class:</b>	NEMA 4, NEMA 12, IP65	
<b>Temperature Range:</b>	-40°C to +125°C	<b>Material:</b>	Powder-coated aluminum alloy	

Description	Part Number
Panel Mount Base	104620C0
Panel Mount Base with Dust Cover	704740C0

**Approvals**

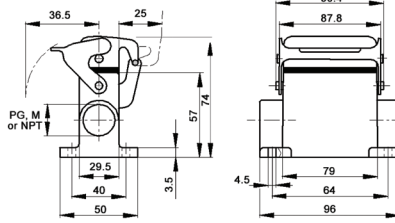
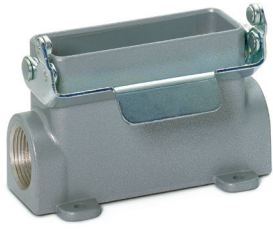
**Complete the Installation**

HA Dust Covers page 419

Photographs are not to scale and are not true representations of the products in question. If not otherwise specified, all values relating to the product are nominal values. For current information go to our website.

# EPIC® HA 16 Surface Mount Bases

## Single Lever



all dimensions are in mm.

### Technical Data

<b>Specifications:</b>	DIN 43652, DIN 50262 (metric)	<b>Protection Class:</b>	NEMA 4, NEMA 12, IP65
<b>Temperature Range:</b>	-40°C to +125°C	<b>Material:</b>	Powder-coated aluminum alloy

PG	Size of Entry		PG	Part Number		Complete the Installation: SKINTOP® Strain Relief			
	NPT	Metric		NPT	Metric	PG Plastic	PG Metal	Metric Plastic	Metric Metal
<b>2 Entries</b>									
21	3/4"	25	105680	105680NP	19568000	53015050	52015750	53111030	53112030
<b>1 Entry</b>									
16	1/2"	20	105671	105671NP	19567100	53015040	52015740	53111020	53112020
21	3/4"	25	105670	105670NP	19567000	53015050	52015750	53111030	53112030
<b>2 Entries with Dust Cover</b>									
16	1/2"	20	704862	704862NP	—	53015040	52015740	53111020	53112020
—	—	25	—	—	79486400	—	—	53111030	53112030
<b>1 Entry with Dust Cover</b>									
16	1/2"	20	704852	704852NP	79485200	53015040	52015740	53111020	53112030
21	3/4"	25	704854	704854NP	79485400	53015050	52015750	53111030	53112030

### Approvals

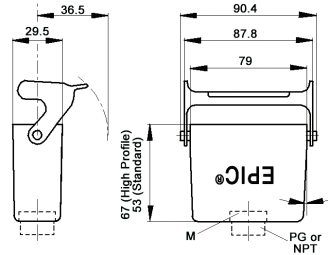


**Complete the Installation**

HA Dust Covers  
page 419

# EPIC® HA 16 Cable Coupler Hoods

## Single Lever



all dimensions are in mm.

### Technical Data

<b>Specifications:</b>	DIN 43652, DIN 50262 (metric)	<b>Protection Class:</b>	NEMA 4, NEMA 12, IP65
<b>Temperature Range:</b>	-40°C to +125°C	<b>Material:</b>	Powder-coated aluminum alloy

PG	Size of Entry		PG	Part Number		Complete the Installation: SKINTOP® Strain Relief			
	NPT	Metric		NPT	Metric*	PG Plastic	PG Metal	Metric Plastic	Metric Metal
<b>Standard Profile</b>									
16	1/2"	20	105630	105630NP	19563000	53015040	52015740	53111020	53112020
—	—	25	—	—	19563200	—	—	53111030	53112030
<b>High Profile</b>									
16	1/2"	20	704802	704802NP	79480200	53015040	52015740	53111020	53112020
21	3/4"	25	704804	704804NP	79480400	—	—	53111030	53112030

\* Metric hoods do not come with a neck

### Approvals



**Complete the Installation**

HA Dust Covers  
page 419