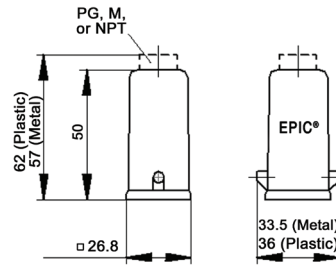
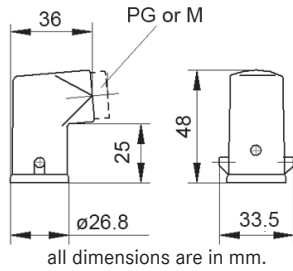


EPIC® HA 3/4 Hoods  
Single Lever Bolts



|                           |   |
|---------------------------|---|
| <b>Technical Data</b>     |   |
| <b>Specifications:</b>    | DIN 43652, DIN 50262 (metric) <b>IP Protection Class:</b> NEMA 4, NEMA 12, IP65 |
| <b>Temperature Range:</b> | -40°C to +125°C <b>Material:</b> see table                                      |

| Size of Entry     | Material |     |               | Part Number: Without Cable Gland |          |          | Part Number: With Cable Gland |          |
|-------------------|----------|-----|---------------|----------------------------------|----------|----------|-------------------------------|----------|
|                   | PG       | NPT | Metric        | PG                               | NPT      | Metric   | PG                            | Metric   |
| <b>Top Entry</b>  |          |     |               |                                  |          |          |                               |          |
| 11                | 1/2"     | 20  | Die-cast Zinc | 10512100                         | 105121NP | 19512100 | 10426500                      | 19426500 |
| 11                | 1/2"     | 20  | Black Plastic | 10425500                         | 104255NP | 19425500 | 10426700                      | —        |
| 11                | 1/2"     | 20  | Gray Plastic  | 10426000                         | 104260NP | 19426000 | 10426400                      | —        |
| <b>Side Entry</b> |          |     |               |                                  |          |          |                               |          |
| 11                | 1/2"     | 20  | Die-cast Zinc | 10512300                         | 105123NP | 19512300 | 10427500                      | 19427500 |
| 11                | 1/2"     | 20  | Black Plastic | 10427300                         | 104273NP | 19427300 | 10620600                      | —        |
| 11                | 1/2"     | 20  | Gray Plastic  | 10427000                         | 104270NP | 19427000 | 10427100                      | —        |

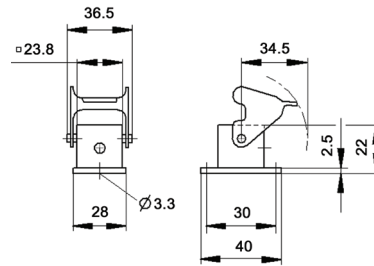
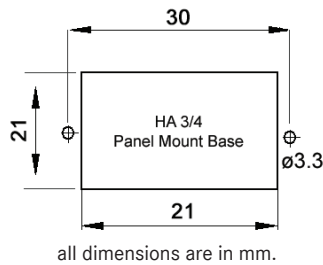
**Approvals**

UL<sup>®</sup> US    RoHS<sup>✓</sup>    DVE

**Complete the Installation**

HA Dust Covers page 419

EPIC® HA 3/4 Panel Mount Bases  
Single Lever



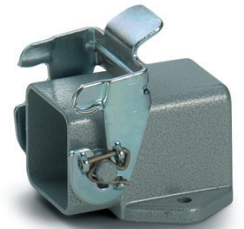
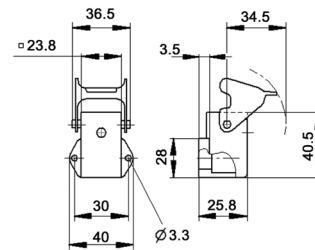
**Complete the Installation**

HA Dust Covers page 419

**Approvals**

RoHS<sup>✓</sup>

| Description                      | Die-cast Zinc | Part Number Black Plastic | Gray Plastic |
|----------------------------------|---------------|---------------------------|--------------|
| Panel Mount Base                 | 10422500      | 10422200                  | 10422000     |
| Panel Mount Base with Dust Cover | 44429015      | —                         | —            |
| Right-Angle Panel Mount Base     | 10423500      | 10423100                  | 10423000     |

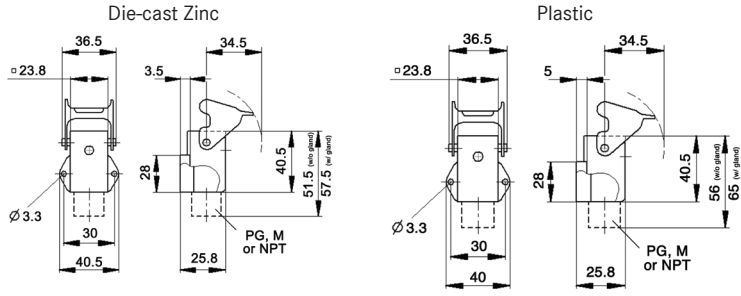
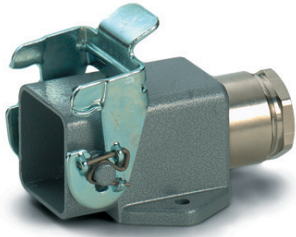


|                           |   |
|---------------------------|---|
| <b>Technical Data</b>     |   |
| <b>Specifications:</b>    | DIN 43652, DIN 50262 (metric) <b>IP Protection Class:</b> NEMA 4, NEMA 12, IP65 |
| <b>Temperature Range:</b> | -40°C to +125°C <b>Material:</b> see table                                      |

Photographs are not to scale and are not true representations of the products in question. If not otherwise specified, all values relating to the product are nominal values. For current information go to our website.

# EPIC® HA 3/4 Surface Mount Bases

## Single Lever



all dimensions are in mm.

### Technical Data

|                           |                               |                             |                       |
|---------------------------|-------------------------------|-----------------------------|-----------------------|
| <b>Specifications:</b>    | DIN 43652, DIN 50262 (metric) | <b>IP Protection Class:</b> | NEMA 4, NEMA 12, IP65 |
| <b>Temperature Range:</b> | -40°C to +125°C               | <b>Material:</b>            | see table             |

| PG | Size of Entry |        | Material      | Part Number: Without Cable Gland |          |          | Part Number: With Cable Gland |          |
|----|---------------|--------|---------------|----------------------------------|----------|----------|-------------------------------|----------|
|    | NPT           | Metric |               | PG                               | NPT      | Metric   | PG                            | Metric   |
| 11 | 1/2"          | 20     | Die-cast Zinc | 10512700                         | 105127NP | 19512700 | 10424500                      | 19424500 |
| 11 | 1/2"          | 20     | Gray Plastic  | 10424000                         | 104240NP | —        | 10424200                      | 19421900 |

### Approvals



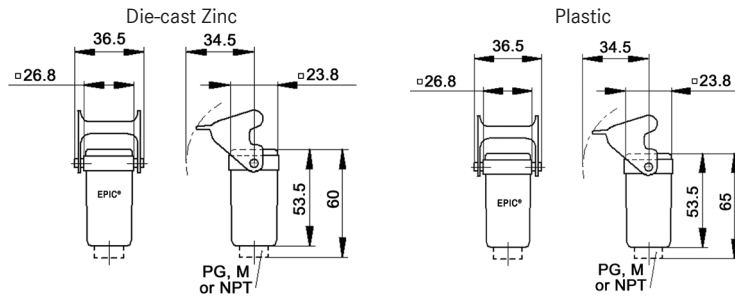
#### Complete the Installation



HA Dust Covers  
page 419

# EPIC® HA 3/4 Cable Coupler Hoods

## Single Lever



all dimensions are in mm.

### Technical Data

|                           |                               |                             |                       |
|---------------------------|-------------------------------|-----------------------------|-----------------------|
| <b>Specifications:</b>    | DIN 43652, DIN 50262 (metric) | <b>IP Protection Class:</b> | NEMA 4, NEMA 12, IP65 |
| <b>Temperature Range:</b> | -40°C to +125°C               | <b>Material:</b>            | see table             |

| PG | Size of Entry |        | Material      | Part Number: Without Cable Gland |          |          | With Cable Gland |
|----|---------------|--------|---------------|----------------------------------|----------|----------|------------------|
|    | NPT           | Metric |               | PG                               | NPT      | Metric   | PG               |
| 11 | 1/2"          | 20     | Die-cast Zinc | 10512900                         | 105129NP | 19512900 | 10429500         |
| 11 | 1/2"          | 20     | Black Plastic | 10429200                         | 104292NP | 19429200 | 10620300         |
| 11 | 1/2"          | 20     | Gray Plastic  | 10429000                         | 104290NP | 19429000 | 10429100         |

### Approvals



#### Complete the Installation



HA Dust Covers  
page 419