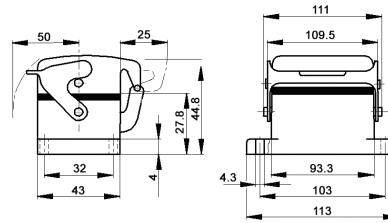
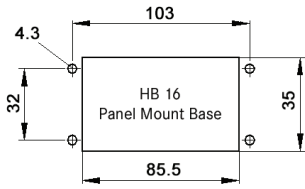


EPIC® HB 16 Panel Mount Bases

Single Lever



All dimensions are in mm.

Technical Data			
Specifications:	DIN 43652	Protection Class:	NEMA 4, NEMA 12, IP65
Temperature Range:	-40°C to +125°C	Material:	Powder-coated aluminum alloy

Description	Part Number
Panel Mount Base	10072900
Panel Mount Base with Dust Cover	10073900

Complete the Installation

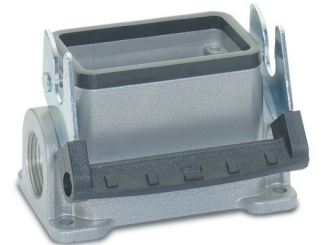
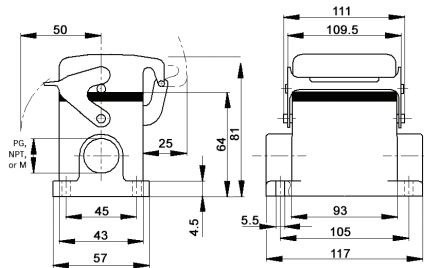
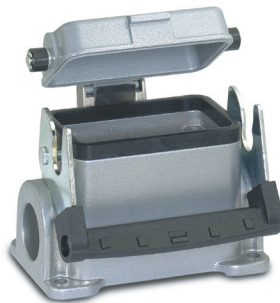
HB Dust Covers: page 415

Approvals



EPIC® HB 16 Surface Mount Bases

Single Lever



All dimensions are in mm.

Technical Data			
Specifications:	DIN 43652	Protection Class:	NEMA 4, NEMA 12, IP65
Temperature Range:	-40°C to +125°C	Material:	Powder-coated aluminum alloy

PG	Size of Entry		PG	Part Number		Complete the Installation: SKINTOP® Strain Relief, page 368			
	NPT	Metric		NPT	Metric	PG Nylon	PG Metal	Metric Nylon	Metric Metal
2 Entries									
21	3/4"	25	100759	100759NP	19075900	53015050	52015750	53111030	53112030
1 Entry									
21	3/4"	25	100749	100749NP	19074900	53015050	52015750	53111030	53112030
2 Entries with Dust Cover									
21	3/4"	25	100789	100789NP	19078900	53015050	52015750	53111030	53112030
1 Entry with Dust Cover									
21	3/4"	25	100769	100769NP	19076900	53015050	52015750	53111030	53112030

Approvals



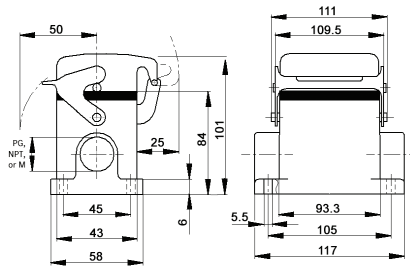
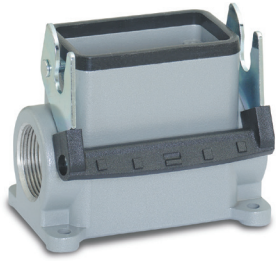
Complete the Installation

HB Dust Covers: page 415

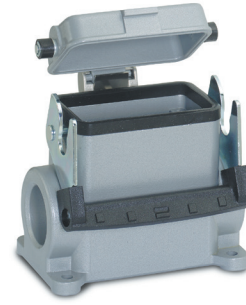
Photographs are not to scale and are not true representations of the products in question. For current information go to our website. If not otherwise specified, all values relating to the product are nominal values.

EPIC® HB 16 High Profile Surface Mount Bases

Single Lever



All dimensions are in mm.



Technical Data

Specifications:	DIN 43652	Protection Class:	NEMA 4, NEMA 12, IP65
Temperature Range:	-40°C to +125°C	Material:	Powder-coated aluminum alloy

PG	Size of Entry		PG	Part Number		Complete the Installation: SKINTOP® Strain Relief, page 368			
	NPT	Metric		NPT	Metric	PG Nylon	PG Metal	Metric Nylon	Metric Metal
2 Entries									
21	3/4"	25	701112	701112NP	79111200	53015050	52015750	53111030	53112030
29	1"	32	701114	701114NP	79111400	53015060	52015760	53111040	53112040
1 Entry									
21	3/4"	25	701102	701102NP	79110200	53015050	52015750	53111030	53112030
29	1"	32	701104	701104NP	79110400	53015060	52015760	53111040	53112040
2 Entries with Dust Cover									
21	3/4"	25	701152	701152NP	79115200	53015050	52015750	53111030	53112030
29	1"	32	701154	701154NP	79115400	53015060	52015760	53111040	53112040
1 Entry with Dust Cover									
21	3/4"	25	701142	701142NP	79114200	53015050	52015750	53111030	53112030
29	1"	32	701144	701144NP	79114400	53015060	52015760	53111040	53112040

Approvals



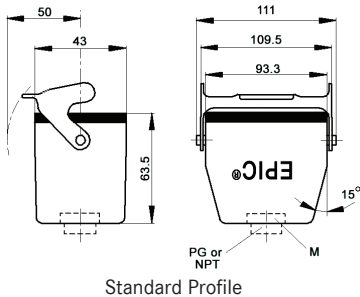
Complete the Installation



HB Dust Covers:
page 415

EPIC® HB 16 Cable Coupler Hoods

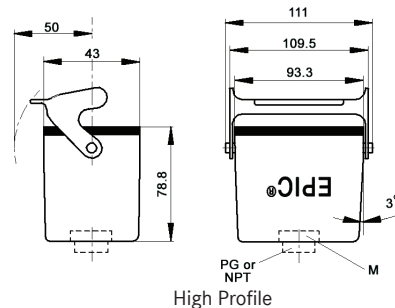
Single Lever



Standard Profile



All dimensions are in mm.



High Profile

Technical Data

Specifications:	DIN 43652	Protection Class:	NEMA 4, NEMA 12, IP65
Temperature Range:	-40°C to +125°C	Material:	Powder-coated aluminum alloy

PG	Size of Entry		PG	Part Number		Complete the Installation: SKINTOP® Strain Relief, page 368			
	NPT	Metric		NPT	Metric*	PG Nylon	PG Metal	Metric Nylon	Metric Metal
Standard Profile									
21	3/4"	25	100869	100869NP	19086900	53015050	52015750	53111030	53112030
High Profile									
21	3/4"	25	700922	700922NP	79092200	53015050	52015750	53111030	53112030
29	1"	32	700924	700924NP	79092400	53015060	52015760	53111040	53112040

* Metric hoods do not come with a neck.

Approvals



Complete the Installation



HB Dust Covers:
page 415

Photographs are not to scale and are not true representations of the products in question. For current information go to our website. If not otherwise specified, all values relating to the product are nominal values.