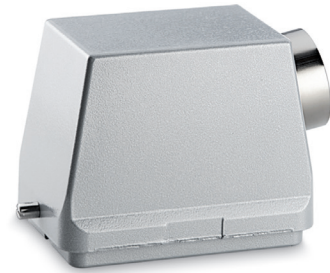
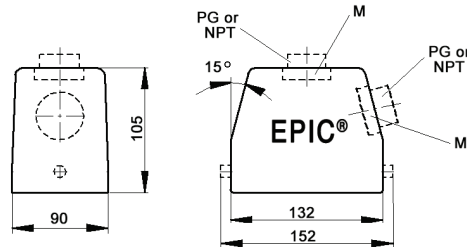


EPIC® HB 48 Standard Hoods

Single Lever Bolts



All dimensions are in mm.

Technical Data

Specifications:	DIN 43652	IP Protection Class:	NEMA 4, NEMA 12, IP65
Temperature Range:	-40°C to +125°C	Material:	Powder-coated aluminum alloy

PG	Size of Entry		PG	Part Number		Complete the Installation: SKINTOP® Strain Relief, page 368			
	NPT	Metric		NPT	Metric	PG Nylon	PG Metal	Metric Nylon	Metric Metal
Top Entry									
29	1"	32	101550	101550NP	19155000	53015060	52015760	53111040	53112040
36	1 1/4"	40	101560	101560NP	19156000	53015070	52015765	53111050	53112050
42	—	50	101570	—	19157000	53015080	52015766	53111060	53112060
Side Entry									
29	1"	32	101580	101580NP	19158000	53015060	52015760	53111040	53112040
36	1 1/4"	40	101590	101590NP	19159000	53015070	52015765	53111050	53112050
42	—	50	101600	—	19160000	53015080	52015766	53111060	53112060

Approvals

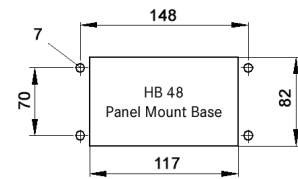
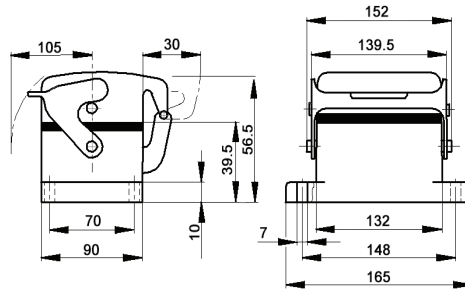


Complete the Installation

HB Dust Covers: page 415

EPIC® HB 48 Panel Mount Bases

Single Lever



All dimensions are in mm.

Technical Data

Specifications:	DIN 43652	IP Protection Class:	NEMA 4, NEMA 12, IP65
Temperature Range:	-40°C to +125°C	Material:	Powder-coated aluminum alloy

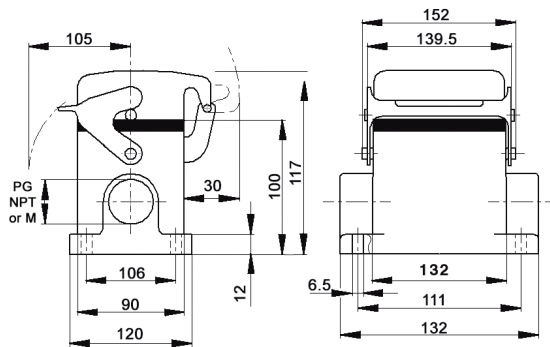
Description	Part Number
Panel Mount Base	10161000
Panel Mount Base with Dust Cover: Hold Down Screw, No Dust Cover Bolts	10152000
Panel Mount Base with Dust Cover: Dust Cover Bolts	10152500

Approvals

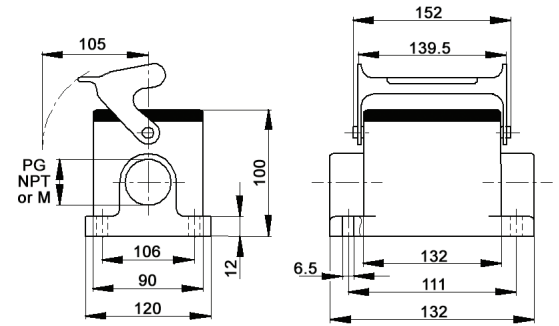


Photographs are not to scale and are not true representations of the products in question. For current information go to our website. If not otherwise specified, all values relating to the product are nominal values.

EPIC® HB 48 Surface Mount Bases
Single Lever



All dimensions are in mm.



All dimensions are in mm.

Technical Data

Specifications:	DIN 43652	IP Protection Class:	NEMA 4, NEMA 12, IP65
Temperature Range:	-40°C to +125°C	Material:	Powder-coated aluminum alloy

PG	Size of Entry		PG	Part Number		Complete the Installation: SKINTOP® Strain Relief, page 368			
	NPT	Metric		NPT	Metric	PG Nylon	PG Metal	Metric Nylon	Metric Metal
2 Entries									
29	1"	32	101660	101660NP	19166000	53015060	52015760	53111040	53112040
36	1 1/4"	40	101661	101661NP	19166100	53015070	52015765	53111050	53112050
1 Entry									
29	1"	32	101650	101650NP	19165000	53015060	52015760	53111040	53112040
36	1 1/4"	40	101651	101651NP	19165100	53015070	52015765	53111050	53112050
2 Entries with Dust Cover									
29	1"	32	101680	101680NP	19168000	53015060	52015760	53111040	53112040
36	1 1/4"	40	101681	101681NP	19168100	53015070	52015765	53111050	53112050
1 Entry with Dust Cover									
29	1"	32	101670	101670NP	19167000	53015060	52015760	53111040	53112040
36	1 1/4"	40	101671	101671NP	19167100	53015070	52015765	53111050	53112050

Approvals



Photographs are not to scale and are not true representations of the products in question. For current information go to our website. If not otherwise specified, all values relating to the product are nominal values.