

## EPIC® HBVE Series



EPIC® HBVE series inserts handle higher voltage and are equipped with two switch contacts. These contacts “make” after the working contacts are engaged and “break” before the working contacts disengage. They can be wired as part of an electrical interlock circuit to ensure that power to the working contacts is turned off during connector mating and unmating.

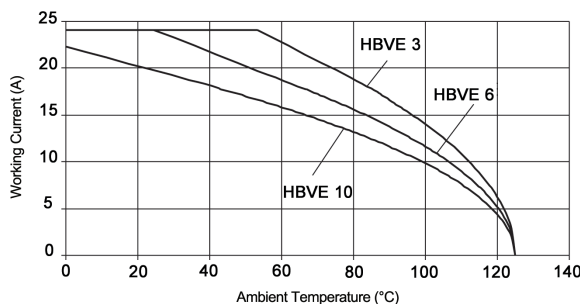
### Technical Data

<b>Number of Contacts:</b>	3+2+PE, 6+2+PE, 10+2+PE	<b>Test Voltage:</b>	6 kV
<b>Temperature Range:</b>	-40°C to +100°C	<b>Rated Voltage:</b>	
- Short-term:	up to +125°C	- UL/CSA:	600V
<b>Pollution Level:</b>	3	- IEC:	630V
<b>Mating Cycles:</b>	- Per DIN EN 61984:2008 Service Life Test: Tested to 100 cycles and passed - Per Contact Thermal Test: Useful service up to 500 cycles is possible at rated voltage and current*	<b>Rated Current:</b>	
		- UL/CSA; IEC:	16A
		<b>Wire Size:</b>	20- 14 AWG (0.5-2.5 mm <sup>2</sup> )
		<b>Contact Material:</b>	Silver-plated copper alloy
		<b>Contact Resistance:</b>	< 2 mΩ

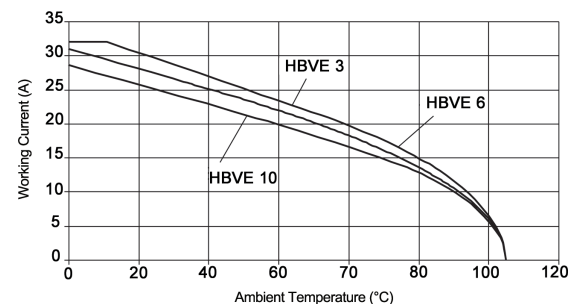
\* In dry, non-conductive, non-corrosive environments when protected in a housing rated at least IP54 and disconnected for cycling and maintenance only.

## EPIC® HBVE Inserts: Derating Curves

EPIC® HBVE Screw-Terminated  
16 AWG (1.5 mm<sup>2</sup>)

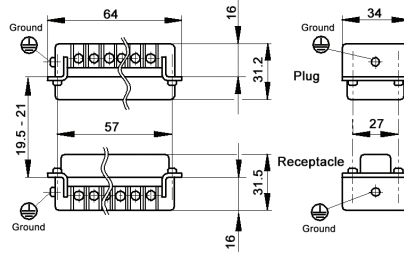


EPIC® HBVE Screw-Terminated  
14 AWG (2.5 mm<sup>2</sup>)

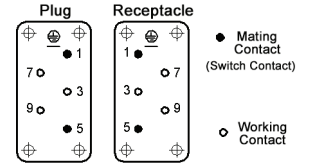


# EPIC® HBVE 3 Inserts

## Screw-Terminated



View from Cable Side



All dimensions are in mm.

Description	Plug	Receptacle
Screw-Terminated with Wire Protection	10210010	10211010
Screw-Terminated without Wire Protection	10210110	10211110

**Compatible Housing**

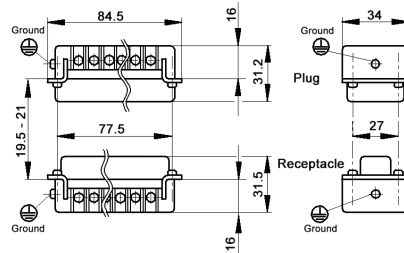
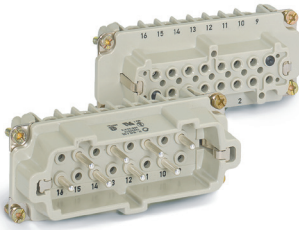
HB 10:  
page 372

**Approvals**

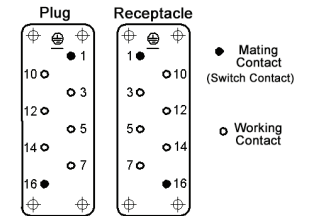


# EPIC® HBVE 6 Inserts

## Screw-Terminated



View from Cable Side



All dimensions are in mm.

Description	Plug	Receptacle
Screw-Terminated with Wire Protection	10239010	10240010
Screw-Terminated without Wire Protection	10239110	10240110

**Compatible Housing**

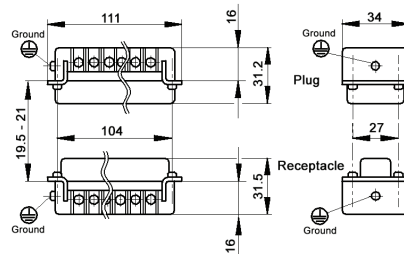
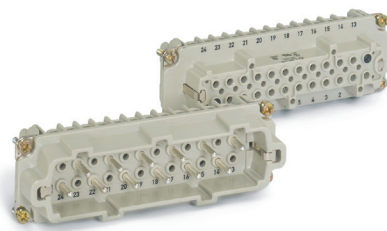
HB 16:  
page 378

**Approvals**

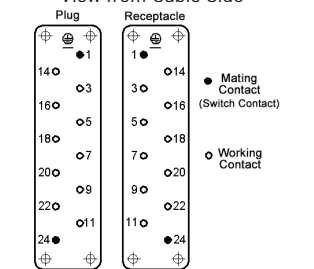


# EPIC® HBVE 10 Inserts

## Screw-Terminated



View from Cable Side



All dimensions are in mm.

Description	Plug	Receptacle
Screw-Terminated with Wire Protection	10270010	10271010
Screw-Terminated without Wire Protection	10270110	10271110

**Compatible Housing**

HB 24:  
page 384

**Approvals**



Photographs are not to scale and are not true representations of the products in question. For current information go to our website. If not otherwise specified, all values relating to the product are nominal values.