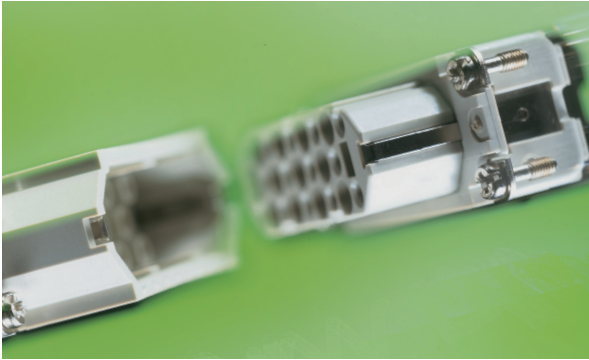


EPIC® HD Series



EPIC® HD series inserts are designed for use in industries where large numbers of contacts are required and limited space is available. These high-density crimp inserts are available with stamped & formed or machined contacts and fit into EPIC® HA & HB series housings.

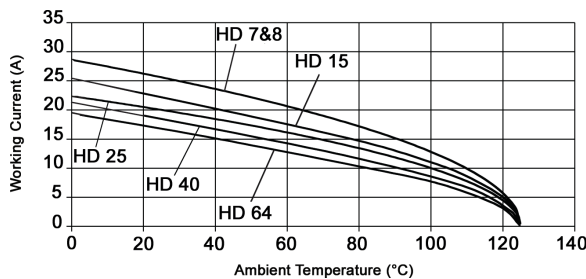
Technical Data

Number of Contacts:	7, 8, 15, 25, 40, 50, 64, 80, 128 (+PE)	Rated Voltage:	
Temperature Range:	-40°C to +100°C	- IEC EPIC® HD 7-8:	
- Short-term:	up to +125°C	- Metal housing:	42V
Pollution Level:	3	- Plastic housing:	250V
Mating Cycles:	- Per DIN EN 61984:2008 Service Life Test: Tested to 100 cycles and passed - Per Contact Thermal Test: Useful service up to 500 cycles is possible at rated voltage and current*	- IEC EPIC® HD 15-128:	250V
Test Voltage:	2.5 kV	- UL/CSA:	250V
		Rated Current:	
		- UL/CSA, IEC:	10A
		Wire Size:	26- 14 AWG (0.14-2.5 mm ²)
		Contact Material:	Silver- or gold-plated copper alloy
		Contact Resistance:	< 2 mΩ
		- EPIC® HD 40, 64-128 (machined contacts):	< 3 mΩ

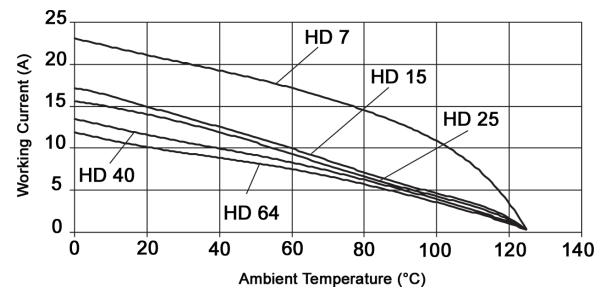
* In dry, non-conductive, non-corrosive environments when protected in a housing rated at least IP54 and disconnected for cycling and maintenance only.

EPIC® HD Inserts: Derating Curves

EPIC® HD Machined
14 AWG (2.5 mm²)

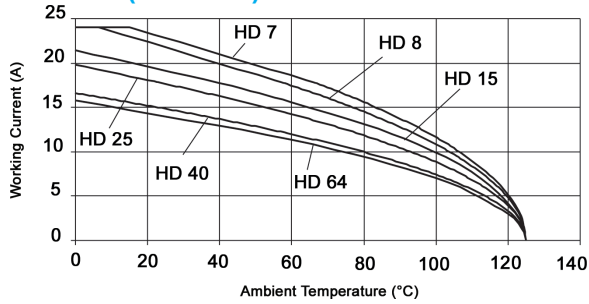


EPIC® HD Stamped & Formed
14 AWG (2.5 mm²)

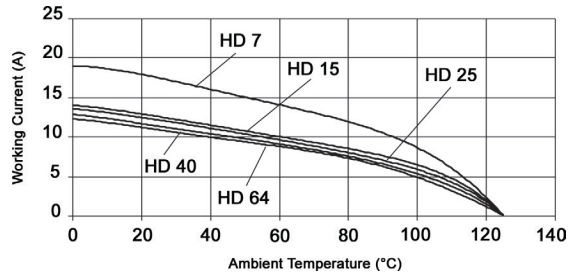


EPIC® HD Inserts: Derating Curves

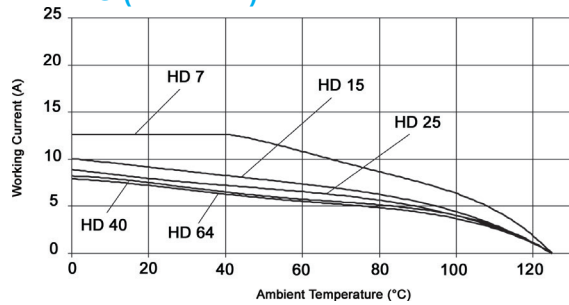
**EPIC® HD Machined
16 AWG (1.5 mm²)**



**EPIC® HD Stamped & Formed
16 AWG (1.5 mm²)**

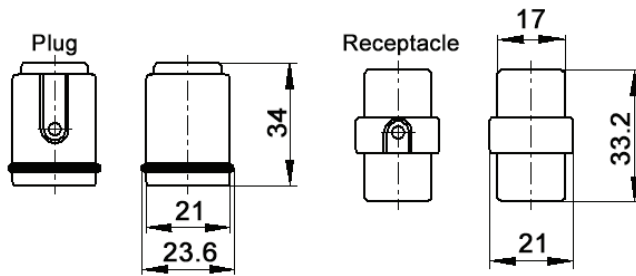


**EPIC® HD Stamped & Formed
20 AWG (0.5 mm²)**



EPIC® HD 7 Inserts

Crimp-Terminated: Machined Contacts

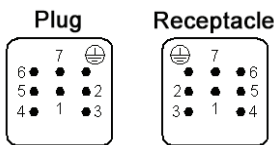


All dimensions are in mm.



Contacts sold separately, see below


View from Cable Side



Approvals



Compatible Housing

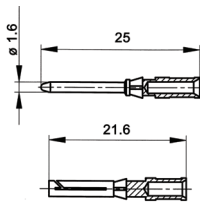


HA 3/4:
page 400

Description	Plug	Receptacle
Crimp-Terminated: Machined Contacts	11250500	11251500

Machined Contacts

1.6 mm Diameter



1 part number = 1 contact, sold in bags of 100

Contact Size mm ²	AWG	Stripping Length (mm)	# of Marking Tracks	Silver Contacts		Gold Contacts	
				Pin	Socket	Pin	Socket
0.14 - 0.37	26 - 22	8	1	13162000	13163000	13162500	13163500
0.5	20	8	2	13162100	13163100	13162600	13163600
0.75 - 1.0	18	8	3	13162200	13163200	13162700	13163700
1.5	16	8	4	13162300	13163300	13162800	13163800
2.5	14	5.8	5	13162400	13163400	13162900	13163900

Complete the Installation



Crimp Tool:
11147000



Crimp Dies:
11147100



Locator:
11147200

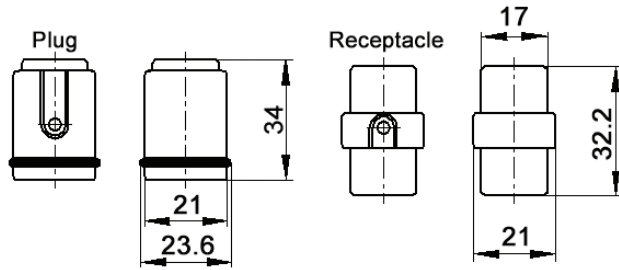


Removal Tool:
11161000

Photographs are not to scale and are not true representations of the products in question.
For current information go to our website. If not otherwise specified, all values relating to the product are nominal values.

EPIC® HD 7 Inserts

Crimp-Terminated: Stamped & Formed Contacts



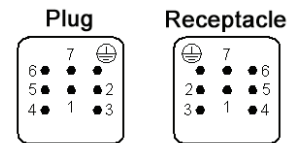
All dimensions are in mm.

Contacts sold separately, see below

Approvals



View from Cable Side



Description	Plug	Receptacle
Crimp-Terminated: Stamped & Formed Contacts	11250000	11251000

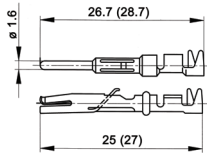
Compatible Housing



HA 3/4:
page 400

Stamped & Formed Contacts

1.6 mm Diameter



1 part number = 1 contact, sold in bags of 100 or 1 reel

Contact Size		Stripping Length (mm)	Bag of 100: Silver		Bag of 100: Gold		Reel of 100: Silver Left-hand Feed		Reel of 200: Silver Left-hand Feed	
mm ²	AWG		Pin	Socket	Pin	Socket	Pin	Socket	Pin	Socket
0.14-0.5	26-20	2.5-0.5	11241100	11231100	11243100	11233100	—	—	11240700	11230700
0.5-1.5	20-16	3.5-0.5	11221000	11236100	11221300	11238100	—	—	11220700	11235700
1.5-2.5	16-14	3.5-0.5	11223500	11228500	—	—	11223000	11228000	—	—

Contact Size		Stripping Length (mm)	Reel of 2000: Silver Right-hand Feed		Reel of 2000: Gold Right-hand Feed		Reel of 2000: Silver Left-hand Feed		Reel of 2000: Gold Left-hand Feed	
mm ²	AWG		Pin	Socket	Pin	Socket	Pin	Socket	Pin	Socket
0.14-0.5	26-20	2.5-0.5	11240000	11230000	—	—	11240400	11230400	11240500	11230500
0.5-1.5	20-16	3.5-0.5	11220000	11235000	11220100	11235200	11226000	11226500	—	—
1.5-2.5	16-14	3.5-0.5	—	—	—	—	11222700	11227700	—	—

Complete the Installation



Crimp Tool:
11147000



Locator:
11147300



Crimp Dies:
0.14-0.5 mm²: 11147170
0.5-1.5 mm²: 11147180
1.5-2.5 mm²: 11147190



Crimp Tool for Reel: (includes tool, die, & locator)
0.14-0.5 mm²: 11147004
0.5-1.5 mm²: 11147005
1.5-2.5 mm²: 11147006



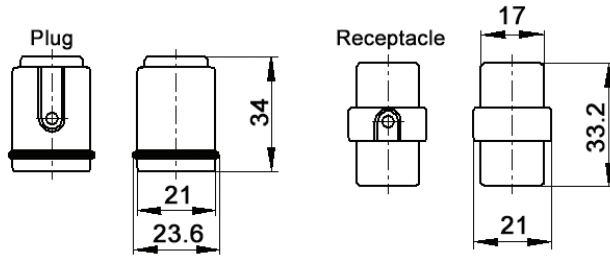
Removal Tool:
11161000



Photographs are not to scale and are not true representations of the products in question. For current information go to our website. If not otherwise specified, all values relating to the product are nominal values.

EPIC® HD 8 Inserts

Crimp-Terminated: Machined Contacts

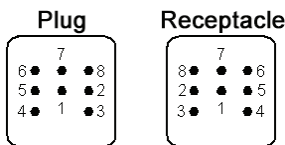


All dimensions are in mm.



Contacts sold separately, see below


View from Cable Side



Approvals



Compatible Housing

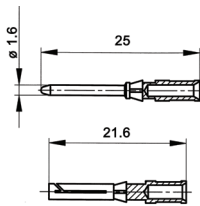


HA 3/4:
page 400

Description	Plug	Receptacle
Crimp-Terminated: Machined Contacts	11252500	11253500

Machined Contacts

1.6 mm Diameter



1 part number = 1 contact, sold in bags of 100

Contact Size mm²	AWG	Stripping Length (mm)	# of Marking Tracks	Silver Contacts		Gold Contacts	
				Pin	Socket	Pin	Socket
0.14 - 0.37	26 - 22	8	1	13162000	13163000	13162500	13163500
0.5	20	8	2	13162100	13163100	13162600	13163600
0.75 - 1.0	18	8	3	13162200	13163200	13162700	13163700
1.5	16	8	4	13162300	13163300	13162800	13163800
2.5	14	5.8	5	13162400	13163400	13162900	13163900

Complete the Installation



Crimp Tool
11147000



Crimp Dies
11147100



Locator
11147200

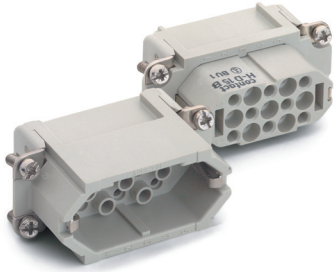


Removal Tool:
11161000

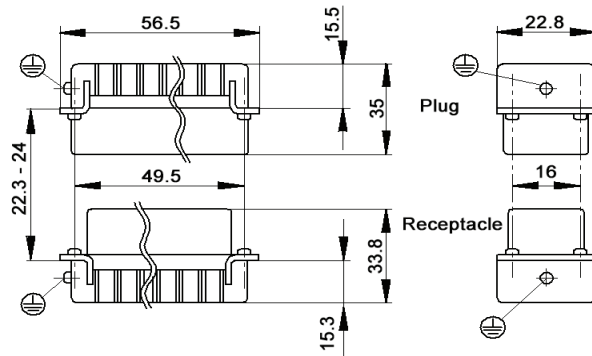
Photographs are not to scale and are not true representations of the products in question.
For current information go to our website. If not otherwise specified, all values relating to the product are nominal values.

EPIC® HD 15 Inserts

Crimp-Terminated: Machined Contacts



Contacts sold separately, see below

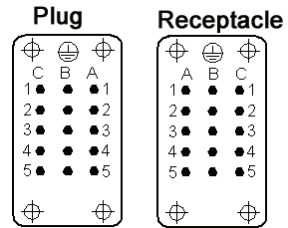


All dimensions are in mm.

Approvals



View from Cable Side



Description	Plug	Receptacle
Crimp-Terminated: Machined Contacts	11283200	11282200

Compatible Housing



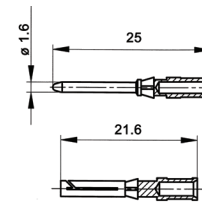
HA 10:
page 402

Machined Contacts

1.6 mm Diameter



1 part number = 1 contact, sold in bags of 100



Contact Size mm²	AWG	Stripping Length (mm)	# of Marking Tracks	Silver Contacts		Gold Contacts	
				Pin	Socket	Pin	Socket
0.14-0.37	26-22	8	1	13162000	13163000	13162500	13163500
0.5	20	8	2	13162100	13163100	13162600	13163600
0.75-1.0	18	8	3	13162200	13163200	13162700	13163700
1.5	16	8	4	13162300	13163300	13162800	13163800
2.5	14	5.8	5	13162400	13163400	13162900	13163900

Complete the Installation



Crimp Tool:
11147000



Crimp Dies:
11147100



Locator:
11147200



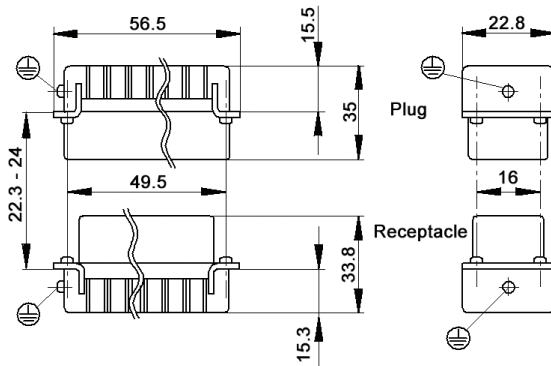
Removal Tool:
11161000

Photographs are not to scale and are not true representations of the products in question.

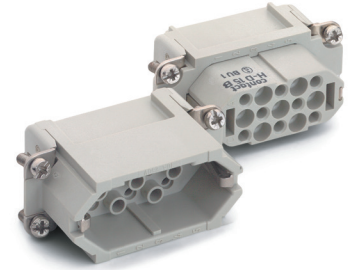
For current information go to our website. If not otherwise specified, all values relating to the product are nominal values.

EPIC® HD 15 Inserts

Crimp-Terminated: Stamped & Formed Contacts

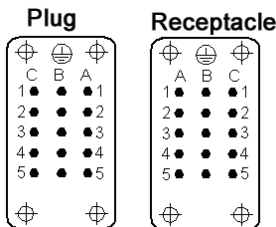


All dimensions are in mm.



Contacts sold separately, see below

View from Cable Side



Approvals



Compatible Housing



HA 10:
page 402

Description	Plug	Receptacle
Crimp-Terminated: Stamped & Formed Contacts	11255000	11256000

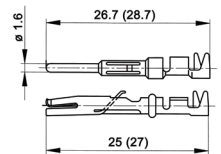


Stamped & Formed Contacts

1.6 mm Diameter

Contact Size mm ²	AWG	Stripping Length (mm)	Bag of 100: Silver		Bag of 100: Gold		Reel of 100: Silver Left-hand Feed		Reel of 200: Silver Left-hand Feed	
			Pin	Socket	Pin	Socket	Pin	Socket	Pin	Socket
0.14-0.5	26-20	2.5-0.5	11241100	11231100	11243100	11233100	—	—	11240700	11230700
0.5-1.5	20-16	3.5-0.5	11221000	11236100	11221300	11238100	—	—	11220700	11235700
1.5-2.5	16-14	3.5-0.5	11223500	11228500	—	—	11223000	11228000	—	—

Contact Size mm ²	AWG	Stripping Length (mm)	Reel of 2000: Silver Right-hand Feed		Reel of 2000: Gold Right-hand Feed		Reel of 2000: Silver Left-hand Feed		Reel of 2000: Gold Left-hand Feed	
			Pin	Socket	Pin	Socket	Pin	Socket	Pin	Socket
0.14-0.5	26-20	2.5-0.5	11240000	11230000	—	—	11240400	11230400	11240500	11230500
0.5-1.5	20-16	3.5-0.5	11220000	11235000	11220100	11235200	11226000	11226500	—	—
1.5-2.5	16-14	3.5-0.5	—	—	—	—	11222700	11227700	—	—



1 part number = 1 contact, sold in bags of 100 or 1 reel

Complete the Installation



Crimp Tool:
11147000



Locator:
11147300



Crimp Dies:
0.14-0.5 mm²: 11147170
0.5-1.5 mm²: 11147180
1.5-2.5 mm²: 11147190



Crimp Tool for Reel: (includes tool, die, & locator)
0.14-0.5 mm²: 11147004
0.5-1.5 mm²: 11147005
1.5-2.5 mm²: 11147006



Removal Tool:
11161000



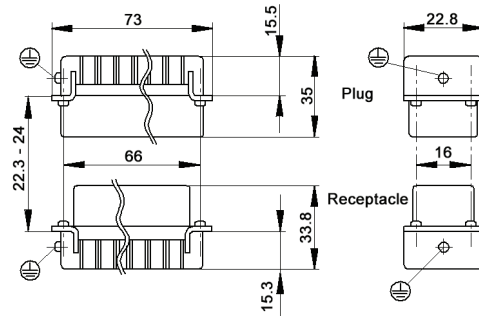
Photographs are not to scale and are not true representations of the products in question. For current information go to our website. If not otherwise specified, all values relating to the product are nominal values.

EPIC® HD 25 Inserts

Crimp-Terminated: Machined Contacts



Contacts sold separately, see below

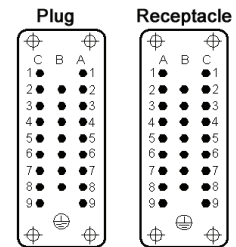


All dimensions are in mm.

Approvals



View from Cable Side



Description	Plug	Receptacle
Crimp-Terminated: Machined Contacts	11283300	11282300

Compatible Housing



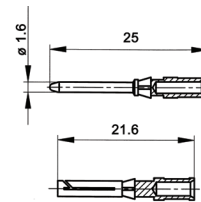
HA 16:
page 404

Machined Contacts

1.6 mm Diameter



1 part number = 1 contact, sold in bags of 100



Contact Size		Stripping Length (mm)	# of Marking Tracks	Silver Contacts		Gold Contacts	
mm ²	AWG			Pin	Socket	Pin	Socket
0.14 - 0.37	26 - 22	8	1	13162000	13163000	13162500	13163500
0.5	20	8	2	13162100	13163100	13162600	13163600
0.75 - 1.0	18	8	3	13162200	13163200	13162700	13163700
1.5	16	8	4	13162300	13163300	13162800	13163800
2.5	14	5.8	5	13162400	13163400	13162900	13163900

Complete the Installation



Crimp Tool:
11147000



Crimp Dies:
11147100



Locator:
11147200



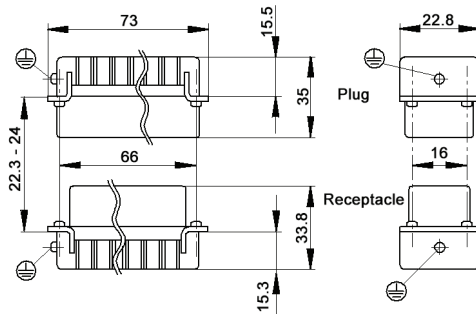
Removal Tool:
11161000

Photographs are not to scale and are not true representations of the products in question.

For current information go to our website. If not otherwise specified, all values relating to the product are nominal values.

EPIC® HD 25 Inserts

Crimp-Terminated: Stamped & Formed Contacts

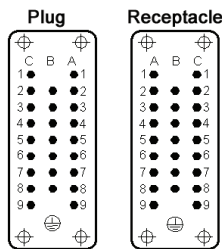


All dimensions are in mm.



Contacts sold separately, see below

View from Cable Side



Approvals



Compatible Housing



HA 16:
page 404

Description	Plug	Receptacle
Crimp-Terminated: Stamped & Formed Contacts	11260000	11261000

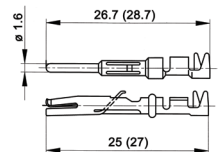


Stamped & Formed Contacts

1.6 mm Diameter

Contact Size		Stripping Length (mm)	Bag of 100: Silver		Bag of 100: Gold		Reel of 100: Silver Left-hand Feed		Reel of 200: Silver Left-hand Feed	
mm ²	AWG		Pin	Socket	Pin	Socket	Pin	Socket	Pin	Socket
0.14-0.5	26-20	2.5-0.5	11241100	11231100	11243100	11233100	—	—	11240700	11230700
0.5-1.5	20-16	3.5-0.5	11221000	11236100	11221300	11238100	—	—	11220700	11235700
1.5-2.5	16-14	3.5-0.5	11223500	11228500	—	—	11223000	11228000	—	—

Contact Size		Stripping Length (mm)	Reel of 2000: Silver Right-hand Feed		Reel of 2000: Gold Right-hand Feed		Reel of 2000: Silver Left-hand Feed		Reel of 2000: Gold Left-hand Feed	
mm ²	AWG		Pin	Socket	Pin	Socket	Pin	Socket	Pin	Socket
0.14-0.5	26-20	2.5-0.5	11240000	11230000	—	—	11240400	11230400	11240500	11230500
0.5-1.5	20-16	3.5-0.5	11220000	11235000	11220100	11235200	11226000	11226500	—	—
1.5-2.5	16-14	3.5-0.5	—	—	—	—	11222700	11227700	—	—



1 part number = 1 contact, sold in bags of 100 or 1 reel

Complete the Installation



Crimp Tool:
11147000



Locator:
11147300



Crimp Dies:
0.14-0.5 mm²: 11147170
0.5-1.5 mm²: 11147180
1.5-2.5 mm²: 11147190



Crimp Tool for Reel: (includes tool, die, & locator)
0.14-0.5 mm²: 11147004
0.5-1.5 mm²: 11147005
1.5-2.5 mm²: 11147006



Removal Tool:
11161000



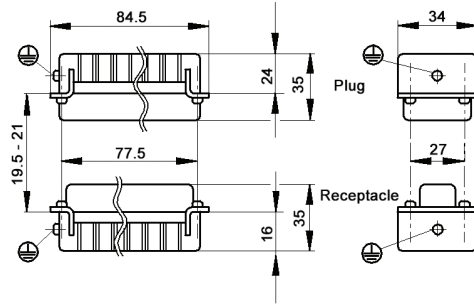
Photographs are not to scale and are not true representations of the products in question. For current information go to our website. If not otherwise specified, all values relating to the product are nominal values.

EPIC® HD 40 Inserts

Crimp-Terminated: Machined Contacts



Contacts sold separately, see below



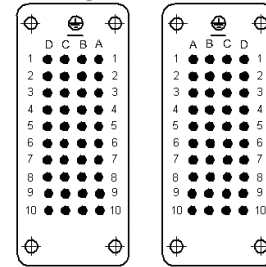
All dimensions are in mm.

View from Cable Side

Approvals



Plug Receptacle



Description	Plug	Receptacle
Crimp-Terminated: Machined Contacts	11265200	11266200

Compatible Housing



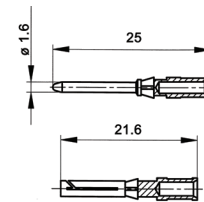
HB 16:
page 378

Machined Contacts

1.6 mm Diameter



1 part number = 1 contact, sold in bags of 100



Contact Size		Stripping Length (mm)	# of Marking Tracks	Silver Contacts		Gold Contacts	
mm ²	AWG			Pin	Socket	Pin	Socket
0.14-0.37	26-22	8	1	13162000	13163000	13162500	13163500
0.5	20	8	2	13162100	13163100	13162600	13163600
0.75-1.0	18	8	3	13162200	13163200	13162700	13163700
1.5	16	8	4	13162300	13163300	13162800	13163800
2.5	14	5.8	5	13162400	13163400	13162900	13163900

Complete the Installation



Crimp Tool:
11147000



Crimp Dies:
11147100



Locator:
11147200



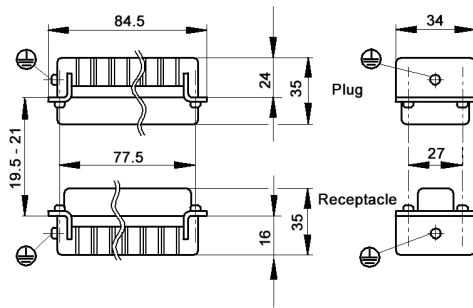
Removal Tool:
11161000

Photographs are not to scale and are not true representations of the products in question.

For current information go to our website. If not otherwise specified, all values relating to the product are nominal values.

EPIC® HD 40 Inserts

Crimp-Terminated: Stamped & Formed Contacts

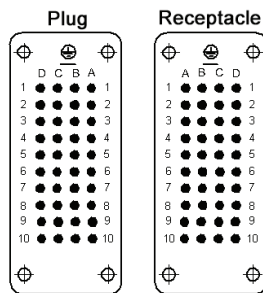


All dimensions are in mm.

View from Cable Side



Contacts sold separately, see below



Compatible Housing

HB 16:
page 378

Approvals



Description	Plug	Receptacle
Crimp-Terminated: Stamped & Formed Contacts	11265000	11266000

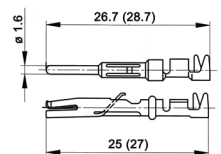


Stamped & Formed Contacts

1.6 mm Diameter

Contact Size mm ²	AWG	Stripping Length (mm)	Bag of 100: Silver		Bag of 100: Gold		Reel of 100: Silver Left-hand Feed		Reel of 200: Silver Left-hand Feed	
			Pin	Socket	Pin	Socket	Pin	Socket	Pin	Socket
0.14-0.5	26-20	2.5-0.5	11241100	11231100	11243100	11233100	—	—	11240700	11230700
0.5-1.5	20-16	3.5-0.5	11221000	11236100	11221300	11238100	—	—	11220700	11235700
1.5-2.5	16-14	3.5-0.5	11223500	11228500	—	—	11223000	11228000	—	—

Contact Size mm ²	AWG	Stripping Length (mm)	Reel of 2000: Silver Right-hand Feed		Reel of 2000: Gold Right-hand Feed		Reel of 2000: Silver Left-hand Feed		Reel of 2000: Gold Left-hand Feed	
			Pin	Socket	Pin	Socket	Pin	Socket	Pin	Socket
0.14-0.5	26-20	2.5-0.5	11240000	11230000	—	—	11240400	11230400	11240500	11230500
0.5-1.5	20-16	3.5-0.5	11220000	11235000	11220100	11235200	11226000	11226500	—	—
1.5-2.5	16-14	3.5-0.5	—	—	—	—	11222700	11227700	—	—



1 part number = 1 contact, sold in bags of 100 or 1 reel

Complete the Installation

	Crimp Tool: 11147000		Locator: 11147300		Crimp Dies: 0.14-0.5 mm ² : 11147170 0.5-1.5 mm ² : 11147180 1.5-2.5 mm ² : 11147190		Crimp Tool for Reel: (includes tool, die, & locator) 0.14-0.5 mm ² : 11147004 0.5-1.5 mm ² : 11147005 1.5-2.5 mm ² : 11147006
			Removal Tool: 11161000				



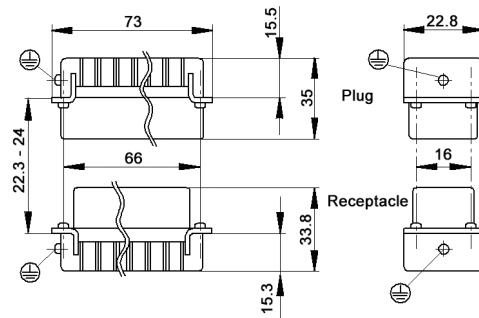
Photographs are not to scale and are not true representations of the products in question. For current information go to our website. If not otherwise specified, all values relating to the product are nominal values.

EPIC® HD 50 Inserts

Crimp-Terminated: Machined Contacts



x2 HD 25 inserts, use two part numbers
Contacts sold separately, see below

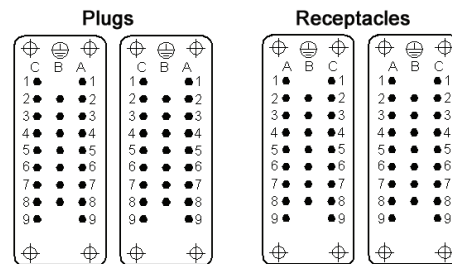


All dimensions are in mm.

Approvals



View from Cable Side



Description	Plug	Receptacle
Crimp-Terminated: Machined Contacts	11283300 (x2)	11282300 (x2)

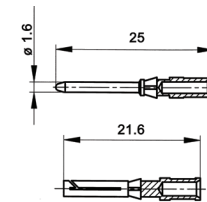
Compatible Housing



HA 32:
page 406

Machined Contacts

1.6 mm Diameter



1 part number = 1 contact, sold in bags of 100

Contact Size mm²	AWG	Stripping Length (mm)	# of Marking Tracks	Silver Contacts		Gold Contacts	
				Pin	Socket	Pin	Socket
0.14-0.37	26-22	8	1	13162000	13163000	13162500	13163500
0.5	20	8	2	13162100	13163100	13162600	13163600
0.75-1.0	18	8	3	13162200	13163200	13162700	13163700
1.5	16	8	4	13162300	13163300	13162800	13163800
2.5	14	5.8	5	13162400	13163400	13162900	13163900

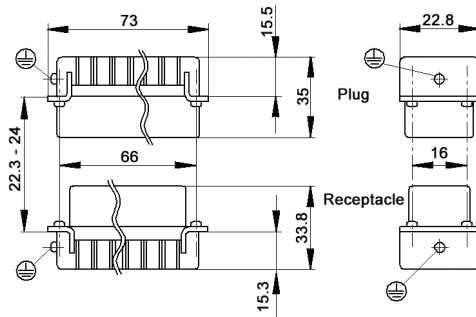
Complete the Installation

	Crimp Tool: 11147000		Crimp Dies: 11147100		Locator: 11147200		Removal Tool: 11161000
---	-------------------------	---	-------------------------	---	----------------------	--	---------------------------

Photographs are not to scale and are not true representations of the products in question.
For current information go to our website. If not otherwise specified, all values relating to the product are nominal values.

EPIC® HD 50 Inserts

Crimp-Terminated: Stamped & Formed Contacts

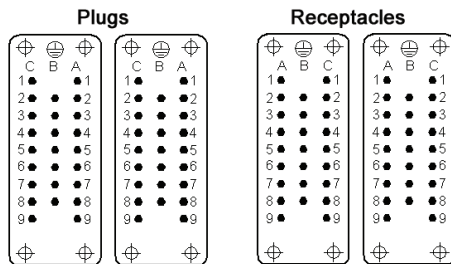


All dimensions are in mm.



x2 HD 25 inserts, use two part numbers
Contacts sold separately, see below

View from Cable Side



Approvals



Compatible Housing



HA 32:
page 406

Description	Plug	Receptacle
Crimp-Terminated: Stamped & Formed Contacts	11260000 (x2)	11261000 (x2)

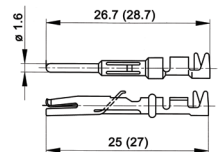


Stamped & Formed Contacts

1.6 mm Diameter

Contact Size mm ²	AWG	Stripping Length (mm)	Bag of 100: Silver		Bag of 100: Gold		Reel of 100: Silver Left-hand Feed		Reel of 200: Silver Left-hand Feed	
			Pin	Socket	Pin	Socket	Pin	Socket	Pin	Socket
0.14-0.5	26-20	2.5-0.5	11241100	11231100	11243100	11233100	—	—	11240700	11230700
0.5-1.5	20-16	3.5-0.5	11221000	11236100	11221300	11238100	—	—	11220700	11235700
1.5-2.5	16-14	3.5-0.5	11223500	11228500	—	—	11223000	11228000	—	—

Contact Size mm ²	AWG	Stripping Length (mm)	Reel of 2000: Silver Right-hand Feed		Reel of 2000: Gold Right-hand Feed		Reel of 2000: Silver Left-hand Feed		Reel of 2000: Gold Left-hand Feed	
			Pin	Socket	Pin	Socket	Pin	Socket	Pin	Socket
0.14-0.5	26-20	2.5-0.5	11240000	11230000	—	—	11240400	11230400	11240500	11230500
0.5-1.5	20-16	3.5-0.5	11220000	11235000	11220100	11235200	11226000	11226500	—	—
1.5-2.5	16-14	3.5-0.5	—	—	—	—	11222700	11227700	—	—



1 part number = 1 contact,
sold in bags of 100 or 1 reel

Complete the Installation



Crimp Tool:
11147000



Locator:
11147300



Crimp Dies:
0.14-0.5 mm²: 11147170
0.5-1.5 mm²: 11147180
1.5-2.5 mm²: 11147190



Crimp Tool for Reel: (includes tool, die, & locator)
0.14-0.5 mm²: 11147004
0.5-1.5 mm²: 11147005
1.5-2.5 mm²: 11147006



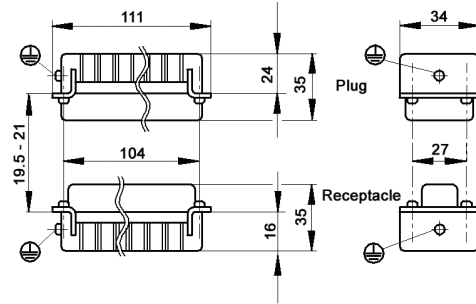
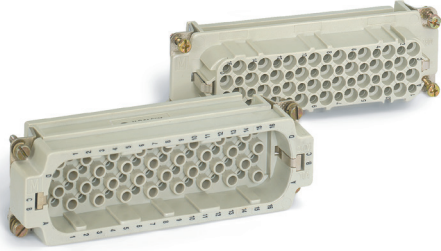
Removal Tool:
11161000



Photographs are not to scale and are not true representations of the products in question.
For current information go to our website. If not otherwise specified, all values relating to the product are nominal values.

EPIC® HD 64 Inserts

Crimp-Terminated: Machined Contacts



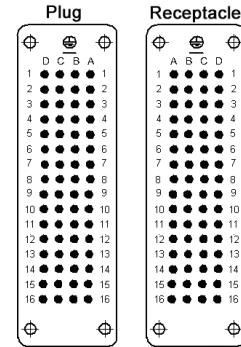
All dimensions are in mm.

Contacts sold separately, see below

Approvals



View from Cable Side



Description	Plug	Receptacle
Crimp-Terminated: Machined Contacts	11272000	11273000

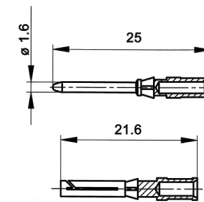
Compatible Housing



HB 24:
page 384

Machined Contacts

1.6 mm Diameter



1 part number = 1 contact, sold in bags of 100

Contact Size mm ²	AWG	Stripping Length (mm)	# of Marking Tracks	Silver Contacts		Gold Contacts	
				Pin	Socket	Pin	Socket
0.14 - 0.37	26 - 22	8	1	13162000	13163000	13162500	13163500
0.5	20	8	2	13162100	13163100	13162600	13163600
0.75 - 1.0	18	8	3	13162200	13163200	13162700	13163700
1.5	16	8	4	13162300	13163300	13162800	13163800
2.5	14	5.8	5	13162400	13163400	13162900	13163900

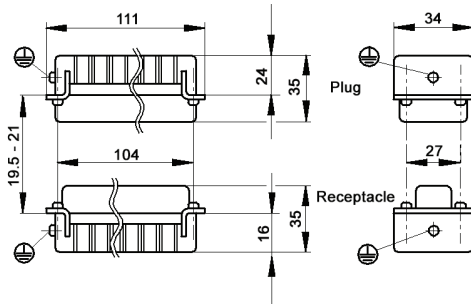
Complete the Installation

	Crimp Tool: 11147000		Crimp Dies: 11147100		Locator: 11147200		Removal Tool: 11161000
--	-------------------------	--	-------------------------	--	----------------------	--	---------------------------

Photographs are not to scale and are not true representations of the products in question. For current information go to our website. If not otherwise specified, all values relating to the product are nominal values.

EPIC® HD 64 Inserts

Crimp-Terminated: Stamped & Formed Contacts

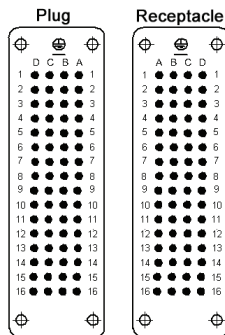


All dimensions are in mm.

View from Cable Side



Contacts sold separately, see below



Approvals



Compatible Housing



HB 24:
page 384

Description	Plug	Receptacle
Crimp-Terminated: Stamped & Formed Contacts	11270000	11271000

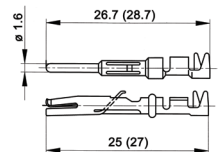


Stamped & Formed Contacts

1.6 mm Diameter

Contact Size mm ²	AWG	Stripping Length (mm)	Bag of 100: Silver		Bag of 100: Gold		Reel of 100: Silver Left-hand Feed		Reel of 200: Silver Left-hand Feed	
			Pin	Socket	Pin	Socket	Pin	Socket	Pin	Socket
0.14-0.5	26-20	2.5-0.5	11241100	11231100	11243100	11233100	—	—	11240700	11230700
0.5-1.5	20-16	3.5-0.5	11221000	11236100	11221300	11238100	—	—	11220700	11235700
1.5-2.5	16-14	3.5-0.5	11223500	11228500	—	—	11223000	11228000	—	—

Contact Size mm ²	AWG	Stripping Length (mm)	Reel of 2000: Silver Right-hand Feed		Reel of 2000: Gold Right-hand Feed		Reel of 2000: Silver Left-hand Feed		Reel of 2000: Gold Left-hand Feed	
			Pin	Socket	Pin	Socket	Pin	Socket	Pin	Socket
0.14-0.5	26-20	2.5-0.5	11240000	11230000	—	—	11240400	11230400	11240500	11230500
0.5-1.5	20-16	3.5-0.5	11220000	11235000	11220100	11235200	11226000	11226500	—	—
1.5-2.5	16-14	3.5-0.5	—	—	—	—	11222700	11227700	—	—



1 part number = 1 contact, sold in bags of 100 or 1 reel

Complete the Installation



Crimp Tool:
11147000



Locator:
11147300



Crimp Dies:
0.14-0.5 mm²: 11147170
0.5-1.5 mm²: 11147180
1.5-2.5 mm²: 11147190



Crimp Tool for Reel: (includes tool, die, & locator)
0.14-0.5 mm²: 11147004
0.5-1.5 mm²: 11147005
1.5-2.5 mm²: 11147006



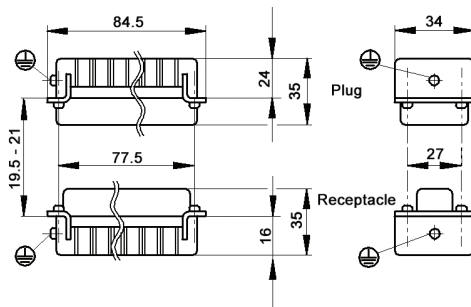
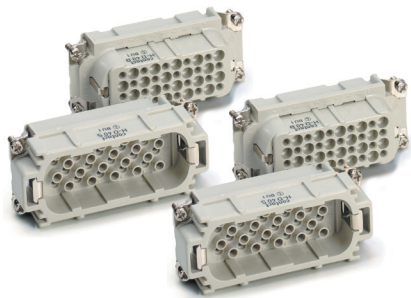
Removal Tool:
11161000



Photographs are not to scale and are not true representations of the products in question. For current information go to our website. If not otherwise specified, all values relating to the product are nominal values.

EPIC® HD 80 Inserts

Crimp-Terminated: Machined Contacts



All dimensions are in mm.

x2 HD 40 inserts, use two part numbers
Contacts sold separately, see below

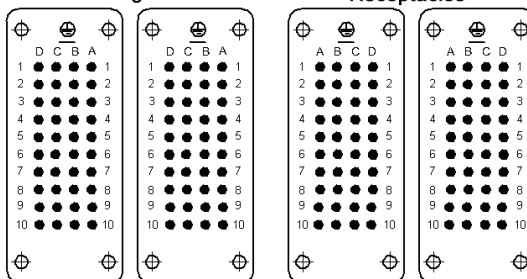
View from Cable Side

Approvals



Plugs

Receptacles



Description	Plug	Receptacle
Crimp-Terminated: Machined Contacts	11265200 (x2)	11266200 (x2)

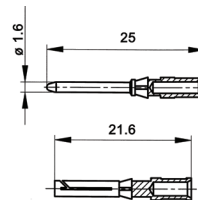
Compatible Housing



HB 32:
page 390

Machined Contacts

1.6 mm Diameter



1 part number = 1 contact, sold in bags of 100

Contact Size mm ²	AWG	Stripping Length (mm)	# of Marking Tracks	Silver Contacts		Gold Contacts	
				Pin	Socket	Pin	Socket
0.14-0.37	26-22	8	1	13162000	13163000	13162500	13163500
0.5	20	8	2	13162100	13163100	13162600	13163600
0.75-1.0	18	8	3	13162200	13163200	13162700	13163700
1.5	16	8	4	13162300	13163300	13162800	13163800
2.5	14	5.8	5	13162400	13163400	13162900	13163900

Complete the Installation



Crimp Tool:
11147000



Crimp Dies:
11147100



Locator:
11147200



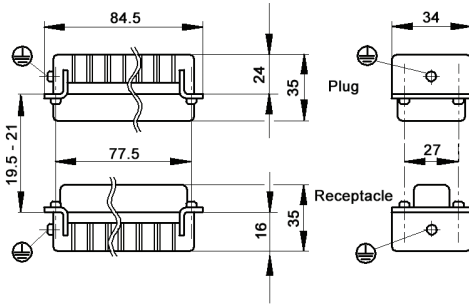
Removal Tool:
11161000

Photographs are not to scale and are not true representations of the products in question.

For current information go to our website. If not otherwise specified, all values relating to the product are nominal values.

EPIC® HD 80 Inserts

Crimp-Terminated: Stamped & Formed Contacts

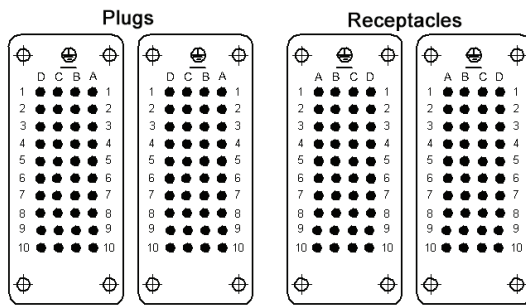


All dimensions are in mm.

View from Cable Side




x2 HD 40 inserts, use two part numbers
Contacts sold separately, see below



Approvals



Compatible Housing



HB 32:
page 390

Description	Plug	Receptacle
Crimp-Terminated: Stamped & Formed Contacts	11265000 (x2)	11266000 (x2)

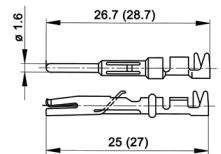


Stamped & Formed Contacts

1.6 mm Diameter

Contact Size mm ²	AWG	Stripping Length (mm)	Bag of 100: Silver		Bag of 100: Gold		Reel of 100: Silver Left-hand Feed		Reel of 200: Silver Left-hand Feed	
			Pin	Socket	Pin	Socket	Pin	Socket	Pin	Socket
0.14-0.5	26-20	2.5-0.5	11241100	11231100	11243100	11233100	—	—	11240700	11230700
0.5-1.5	20-16	3.5-0.5	11221000	11236100	11221300	11238100	—	—	11220700	11235700
1.5-2.5	16-14	3.5-0.5	11223500	11228500	—	—	11223000	11228000	—	—

Contact Size mm ²	AWG	Stripping Length (mm)	Reel of 2000: Silver Right-hand Feed		Reel of 2000: Gold Right-hand Feed		Reel of 2000: Silver Left-hand Feed		Reel of 2000: Gold Left-hand Feed	
			Pin	Socket	Pin	Socket	Pin	Socket	Pin	Socket
0.14-0.5	26-20	2.5-0.5	11240000	11230000	—	—	11240400	11230400	11240500	11230500
0.5-1.5	20-16	3.5-0.5	11220000	11235000	11220100	11235200	11226000	11226500	—	—
1.5-2.5	16-14	3.5-0.5	—	—	—	—	11222700	11227700	—	—



1 part number = 1 contact,
sold in bags of 100 or 1 reel

Complete the Installation



Crimp Tool:
11147000



Locator:
11147300



Crimp Dies:
0.14-0.5 mm²: 11147170
0.5-1.5 mm²: 11147180
1.5-2.5 mm²: 11147190



Crimp Tool for Reel: (includes
tool, die, & locator)
0.14-0.5 mm²: 11147004
0.5-1.5 mm²: 11147005
1.5-2.5 mm²: 11147006



Removal Tool:
11161000



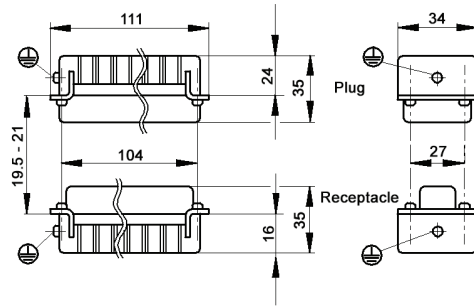
Photographs are not to scale and are not true representations of the products in question.
For current information go to our website. If not otherwise specified, all values relating to the product are nominal values.

EPIC® HD 128 Inserts

Crimp-Terminated: Machined Contacts



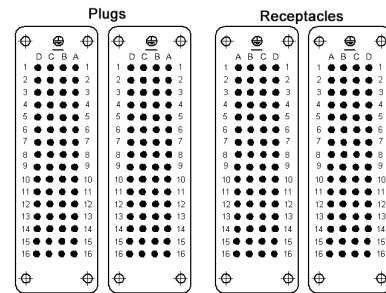
x2 HD 64 inserts, use two part numbers
Contacts sold separately, see below



All dimensions are in mm.

View from Cable Side

Approvals



Description	Plug	Receptacle
Crimp-Terminated: Machined Contacts	11272000 (x2)	11273000 (x2)

Compatible Housing



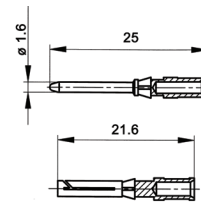
HB 48:
page 392

Machined Contacts

1.6 mm Diameter



1 part number = 1 contact, sold in bags of 100



Contact Size mm ²	AWG	Stripping Length (mm)	# of Marking Tracks	Silver Contacts		Gold Contacts	
				Pin	Socket	Pin	Socket
0.14-0.37	26-22	8	1	13162000	13163000	13162500	13163500
0.5	20	8	2	13162100	13163100	13162600	13163600
0.75-1.0	18	8	3	13162200	13163200	13162700	13163700
1.5	16	8	4	13162300	13163300	13162800	13163800
2.5	14	5.8	5	13162400	13163400	13162900	13163900

Complete the Installation



Crimp Tool:
11147000



Crimp Dies:
11147100



Locator:
11147200

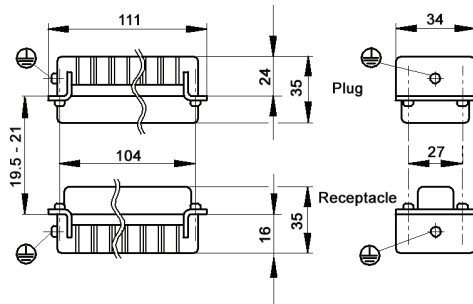


Removal Tool:
11161000

Photographs are not to scale and are not true representations of the products in question.
For current information go to our website. If not otherwise specified, all values relating to the product are nominal values.

EPIC® HD 128 Inserts

Crimp-Terminated: Stamped & Formed Contacts

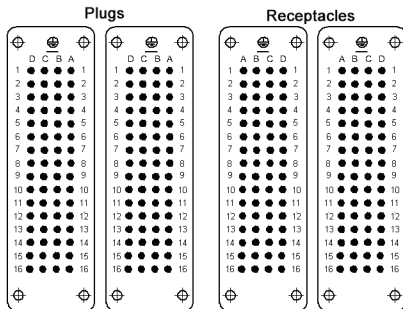


All dimensions are in mm.

View from Cable Side



x2 HD 64 inserts, use two part numbers
Contacts sold separately, see below



Approvals



Compatible Housing



HB 48:
page 392

Description	Plug	Receptacle
Crimp-Terminated: Stamped & Formed Contacts	1127000 (x2)	1127100 (x2)

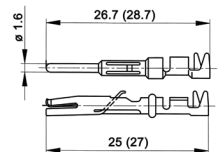
Stamped & Formed Contacts

1.6 mm Diameter



Contact Size mm ²	AWG	Stripping Length (mm)	Bag of 100: Silver		Bag of 100: Gold		Reel of 100: Silver Left-hand Feed		Reel of 200: Silver Left-hand Feed	
			Pin	Socket	Pin	Socket	Pin	Socket	Pin	Socket
0.14-0.5	26-20	2.5-0.5	11241100	11231100	11243100	11233100	—	—	11240700	11230700
0.5-1.5	20-16	3.5-0.5	11221000	11236100	11221300	11238100	—	—	11220700	11235700
1.5-2.5	16-14	3.5-0.5	11223500	11228500	—	—	11223000	11228000	—	—

Contact Size mm ²	AWG	Stripping Length (mm)	Reel of 2000: Silver Right-hand Feed		Reel of 2000: Gold Right-hand Feed		Reel of 2000: Silver Left-hand Feed		Reel of 2000: Gold Left-hand Feed	
			Pin	Socket	Pin	Socket	Pin	Socket	Pin	Socket
0.14-0.5	26-20	2.5-0.5	11240000	11230000	—	—	11240400	11230400	11240500	11230500
0.5-1.5	20-16	3.5-0.5	11220000	11235000	11220100	11235200	11226000	11226500	—	—
1.5-2.5	16-14	3.5-0.5	—	—	—	—	11222700	11227700	—	—



1 part number = 1 contact,
sold in bags of 100 or 1 reel

Complete the Installation



Crimp Tool:
11147000



Locator:
11147300



Crimp Dies:
0.14-0.5 mm²: 11147170
0.5-1.5 mm²: 11147180
1.5-2.5 mm²: 11147190



Crimp Tool for Reel: (includes
tool, die, & locator)
0.14-0.5 mm²: 11147004
0.5-1.5 mm²: 11147005
1.5-2.5 mm²: 11147006



Removal Tool:
11161000



Photographs are not to scale and are not true representations of the products in question.
For current information go to our website. If not otherwise specified, all values relating to the product are nominal values.