

EPIC® Pin & Sleeve Product Selection

International Standard: 16 Amps

Male plugs mate with female connectors, panel-mounted receptacles, and switched-socket outlets. Male inlets mate with female connectors. Dimensional drawings can be found on the indicated pages and are the same for North American and international standards. Circuit wiring diagrams can be found on page 496. Additional configurations are available: see www.lappusa.com for a complete listing.

IP44

IP67

Male Plugs & Inlets

for dimensional data, see pages 475 - 476



Color Code	Voltage / Current Rating	Number of Wires	Number of Poles	Ground-Clock Position	IP67	IP44	IP67	IP44	IP67	
16 Amps					Male Plugs			Male Inlets		
Yellow	110 - 130	3	2+PE	4	477203	700124	710124	477202	476203	
Blue	200 - 250	3	2+PE	6	477303	700126	710126	477302	476303	
Light Blue	200 - 250	4	3+PE	9	477313	700139	—	477312	476313	
Dark Blue	200 - 250	5	3+N+PE	9	477323	700149	—	477322	476323	
Red	380 - 415	4	3+PE	6	477413	700136	710136	477412	476413	
Dark Red	380 - 415	5	3+N+PE	6	477423	700146	710146	477422	476423	

Female Connectors & Receptacles

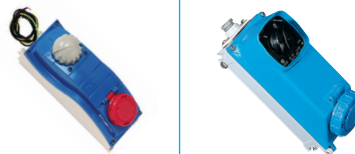
for dimensional data, see pages 476 - 477



Color Code	Voltage / Current Rating	Number of Wires	Number of Poles	Ground-Clock Position	IP67	IP44	IP67	IP67	IP44	IP44
16 Amps					Female Connectors			Female Receptacles		
Yellow	110 - 130	3	2+PE	4	473203	720124	730124	471263	431611	471262
Blue	200 - 250	3	2+PE	6	473303	720126	730126	471363	431622	471362
Light Blue	200 - 250	4	3+PE	9	473313	720139	—	471373	441622	471372
Dark Blue	200 - 250	5	3+N+PE	9	473323	720149	—	471333	451622	471332
Red	380 - 415	4	3+PE	6	473413	720136	730136	471473	441638	471472
Dark Red	380 - 415	5	3+N+PE	6	473423	720146	730146	471483	451638	471482

Switched-Socket Outlets

for dimensional data, see pages 478



Color Code	Voltage / Current Rating	Number of Wires	Number of Poles	Ground-Clock Position	With Fuse Holder IP66/67	Direct Connect IP67
16 Amps					EPIC® ULYSSE	EPIC® ALUPRES
Yellow	110 - 130	3	2+PE	4	400124	460124
Blue	200 - 250	3	2+PE	6	400126	460126
Light Blue	200 - 250	4	3+PE	9	400139	460139
Dark Blue	200 - 250	5	3+N+PE	9	400149	—
Red	380 - 415	4	3+PE	6	400136	460136
Dark Red	380 - 415	5	3+N+PE	6	400146	460146

Photographs are not to scale and are not true representations of the products in question. For current information go to our website. If not otherwise specified, all values relating to the product are nominal values.

EPIC® Pin & Sleeve Product Selection

International Standard: 32 Amps

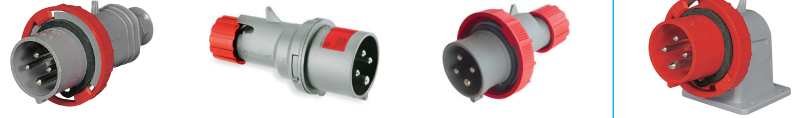
Male plugs mate with female connectors, panel-mounted receptacles, and switched-socket outlets. Male inlets mate with female connectors. Dimensional drawings can be found on the indicated pages and are the same for North American and international standards. Circuit wiring diagrams can be found on page 496. Additional configurations are available: see www.lappusa.com for a complete listing.

IP44

IP67

Male Plugs & Inlets

for dimensional data, see page 479



Color Code	Voltage / Current Rating	Number of Wires	Number of Poles	Ground-Clock Position	IP67	IP44	IP67	IP67
32 Amps					Male Plugs			Male Inlets
Yellow	110 - 130	3	2+PE	4	477206	700224	710224	476206
Blue	200 - 250	3	2+PE	6	477306	700226	710226	476306
Light Blue	200 - 250	4	3+PE	9	477316	700239	—	476316
Dark Blue	200 - 250	5	3+N+PE	9	477326	700249	—	476326
Red	380 - 415	4	3+PE	6	477416	700236	710236	476416
Dark Red	380 - 415	5	3+N+PE	6	477426	700246	710246	476426

Female Connectors & Receptacles

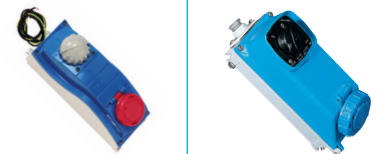
for dimensional data, see pages 480 - 481



Color Code	Voltage / Current Rating	Number of Wires	Number of Poles	Ground-Clock Position	IP67	IP44	IP67	IP67	IP44	IP44
32 Amps					Female Connectors			Female Receptacles		
Yellow	110 - 130	3	2+PE	4	473206	720224	730224	471267	433211	471266
Blue	200 - 250	3	2+PE	6	473306	720226	730226	471367	433222	471366
Light Blue	200 - 250	4	3+PE	9	473316	720239	—	471377	443222	471376
Dark Blue	200 - 250	5	3+N+PE	9	473326	720249	—	471387	453222	471386
Red	380 - 415	4	3+PE	6	473416	720236	730236	471477	443238	471476
Dark Red	380 - 415	5	3+N+PE	6	473426	720246	730246	471487	453238	471486

Switched-Socket Outlets

for dimensional data, see pages 482



Color Code	Voltage / Current Rating	Number of Wires	Number of Poles	Ground-Clock Position	With Fuse Holder IP66/67	Direct Connect IP65
32 Amps						
Yellow	110 - 130	3	2+PE	4	EPIC® ULYSSE 400224	EPIC® ALUPRES 460224
Blue	200 - 250	3	2+PE	6	400226	460226
Light Blue	200 - 250	4	3+PE	9	400239	460239
Dark Blue	200 - 250	5	3+N+PE	9	400249	460249
Red	380 - 415	4	3+PE	6	400236	460236
Dark Red	380 - 415	5	3+N+PE	6	400246	460246

Photographs are not to scale and are not true representations of the products in question. For current information go to our website. If not otherwise specified, all values relating to the product are nominal values.

EPIC® Pin & Sleeve Product Selection

International Standard: 63 & 125 Amps

Male plugs mate with female connectors, panel-mounted receptacles, and switched-socket outlets. Male inlets mate with female connectors. Dimensional drawings can be found on the indicated pages and are the same for North American and international standards. Circuit wiring diagrams can be found on page 496. Additional configurations are available: see www.lappusa.com for a complete listing.

IP44

IP67

Male Plugs & Inlets

for dimensional data, see page 483 & 486



Color Code	Voltage / Current Rating	Number of Wires	Number of Poles	Ground-Clock Position	IP67	IP67	IP67
63 Amps					Male Plugs		Male Inlets
Blue	200 - 250	4	3+PE	9	477317	—	476317
Blue	200 - 250	5	3+N+PE	9	477327	—	476327
Red	380 - 415	4	3+PE	6	477417	710336	746338
Red	380 - 415	5	3+N+PE	6	477427	710346	756338
125 Amps							
Blue	200 - 250	4	3+PE	9	477318	—	476318
Blue	200 - 250	5	3+N+PE	9	477328	—	476328
Red	380 - 415	4	3+PE	6	249538	—	749538
Red	380 - 415	5	3+N+PE	6	259538	—	759538

Female Connectors & Receptacles

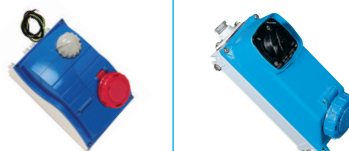
for dimensional data, see page 484 & 486



Color Code	Voltage / Current Rating	Number of Wires	Number of Poles	Ground-Clock Position	IP67	IP67	IP67	IP67
63 Amps					Female Connectors		Female Receptacles	
Blue	200 - 250	4	3+PE	9	473317	—	546322	446322
Blue	200 - 250	5	3+N+PE	9	473327	—	556322	456322
Red	380 - 415	4	3+PE	6	346338	730336	546338	446338
Red	380 - 415	5	3+N+PE	6	356338	730346	556338	456338
125 Amps								
Blue	200 - 250	4	3+PE	9	473318	—	549322	449322
Blue	200 - 250	5	3+N+PE	9	473328	—	559322	459322
Red	380 - 415	4	3+PE	6	349538	—	549538	449538
Red	380 - 415	5	3+N+PE	6	359538	—	559538	459538

Switched-Socket Outlets

for dimensional data, see pages 485



Color Code	Voltage / Current Rating	Number of Wires	Number of Poles	Ground-Clock Position	with Fuse Holder IP66/67	Direct Connect IP55
63 Amps					EPIC® ULYSSE	EPIC® ALUPRES
Blue	200 - 250	4	3+PE	9	400339	460339
Blue	200 - 250	5	3+N+PE	9	400349	460349
Red	380 - 415	4	3+PE	6	400336	—
Red	380 - 415	5	3+N+PE	6	400346	—

Photographs are not to scale and are not true representations of the products in question.

For current information go to our website. If not otherwise specified, all values relating to the product are nominal values.