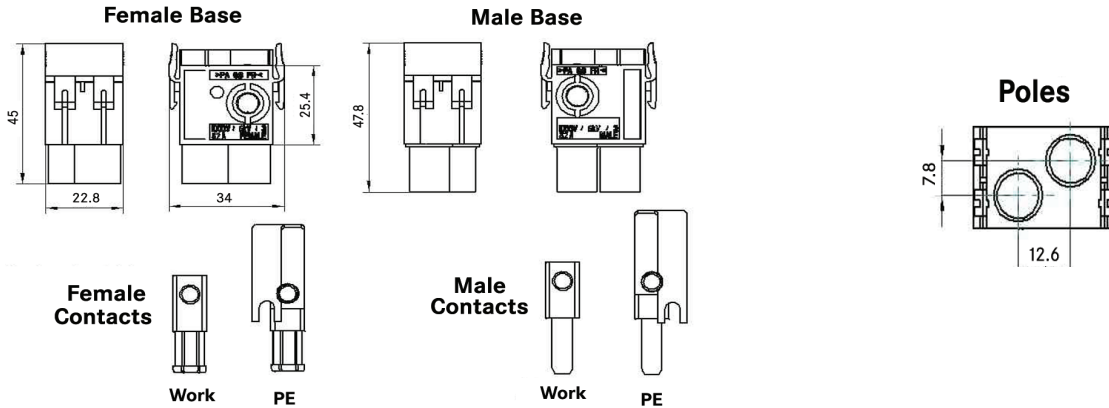
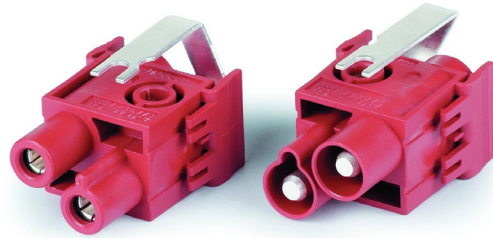
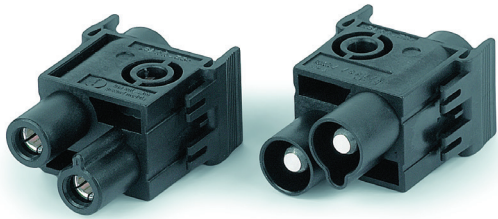


EPIC® MC 2 Modules

2 Working Contacts; 1 Working Contact + 1 Ground



All dimensions are in mm.

Approvals



Description	Plug	Receptacle
2 Working Contacts	10344100	10345100
1 Working Contact + 1 Ground	10344600	10345600

Application Advantage

- Module can be inserted into the standard EPIC® modular frames
- Modules can be inserted or removed from the frame without a tool, due to snap hooks
- Screw contact modules can be wired easily with a standard screwdriver
- Flexibility of the modular series allows the arrangement of modules to fit requirements
- Module takes up two slots in the modular frame
- High current modules require the usage of high profile EPIC® HB 16 & 24 housings

Technical Data

Temperature Range:	-40°C to + 100°C	Termination:	Screw
Mating Cycles:	100 (higher mating cycles depending on the application)	Wire Size:	8-4 AWG (10-25 mm ²)
Rated Voltage:	1000V	Contact Material:	Brass; 2µ nickel & 2-3µ silver
Rated Current:	82A	Contact Resistance:	1.5-4 mΩ

Photographs are not to scale and are not true representations of the products in question. For current information go to our website. If not otherwise specified, all values relating to the product are nominal values.