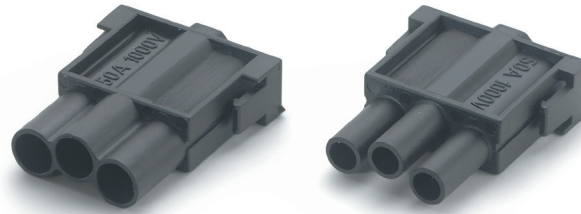
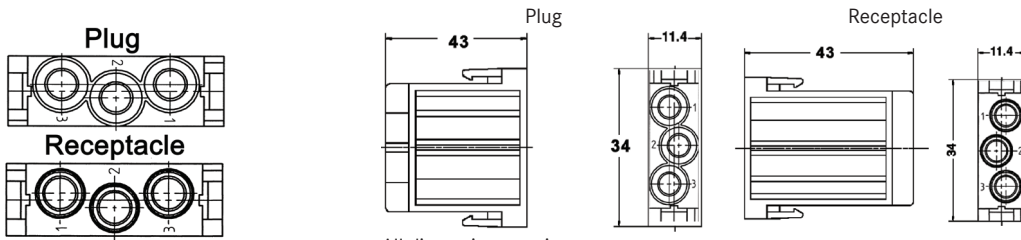


EPIC® MC 3 High Voltage Modules

Crimp-Terminated



Contacts sold separately, see below



All dimensions are in mm.

Approvals



Description	Plug	Receptacle
Crimp-Terminated: Machined Contacts	10399800	10399900





Technical Data

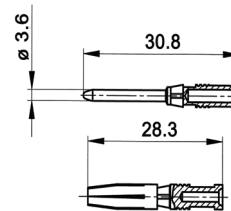
Temperature Range:	-40°C to +100°C
Rated Voltage:	1000V
Rated Current:	50A

Machined Contacts

3.6 mm Diameter

Complete the Installation

	Crimp Tool: 11147000		Crimp Dies: 1.5-2.5 mm ² : 11147110 4.0-10 mm ² : 11147120
	Locator: 11147210		Removal Tool: 11171100



1 part number = 1 contact,
sold in bags of 100

Contact Size mm ²	AWG	Stripping Length (mm)	Silver Contacts	
			Pin	Socket
1.5	16	10	1121070C	1121570C
2.5	14	10	1121060C	1121560C
4.0	12	10	1121000C	1121500C
6.0	10	10	1121010C	1121510C
10.0	8	10	1121020C	1121520C

Photographs are not to scale and are not true representations of the products in question.
For current information go to our website. If not otherwise specified, all values relating to the product are nominal values.