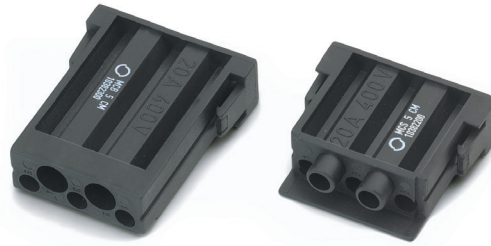
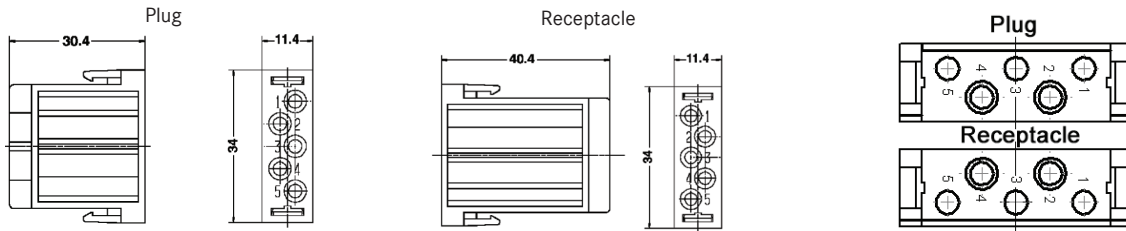


# EPIC® MC 5 High Voltage Modules

Crimp-Terminated



Contacts sold separately, see below



All dimensions are in mm.

## Approvals



Description	Plug	Receptacle
Crimp-Terminated: Machined Contacts	10382200	10382300

## Technical Data

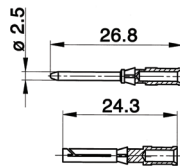
Temperature Range:	-40 °C to +100 °C
Rated Voltage:	400V
Rated Current:	20A

## Machined Contacts

2.5 mm Diameter



1 part number = 1 contact,  
sold in bags of 100



### Complete the Installation

	Crimp Tool: 11147000		Crimp Dies: 11147100
	Locator: 11147200		Removal Tool: 11171000

Contact Size mm <sup>2</sup>	AWG	Stripping Length (mm)	# of Marking Tracks	Silver Contacts	
				Pin	Socket
0.5	20	7.8	—	1121300C	1121800C
0.75 - 1.0	18	7.8	1	1121310C	1121810C
1.5	16	7.8	2	1121320C	1121820C
2.5	14	7.8	3	1121330C	1121830C
4.0	12	7.8	—	1121340C	1121840C

Photographs are not to scale and are not true representations of the products in question.  
For current information go to our website. If not otherwise specified, all values relating to the product are nominal values.