

Machined Contacts: 2.5 mm diameter
for HBE crimp, HEE, HQ & MC Part # 10399000 & 10399100

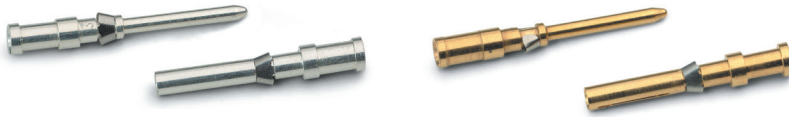


Part number = 1 contact,
sold in bags of 100

AWG	mm ²	Silver		1 μ Gold	
		Pin	Socket	Pin	Socket
20	0.5	11190000	11195000	11192000	11197000
18	0.75-1.0	11190100	11195100	11192100	11197100
16	1.5	11190200	11195200	11192200	11197200
14	2.5	11190300	11195300	—	—
12	4.0	11190400	11195400	—	—

Complete the Installation	
Crimp Tool: 11147000	Crimp Dies: 11147100
Locator: 11147200	Removal Tool: 11182500

Machined Contacts: 1.6 mm diameter
for HD machine, HDD & MC Part # 10382400 & 10382500, 10344300 & 10345300

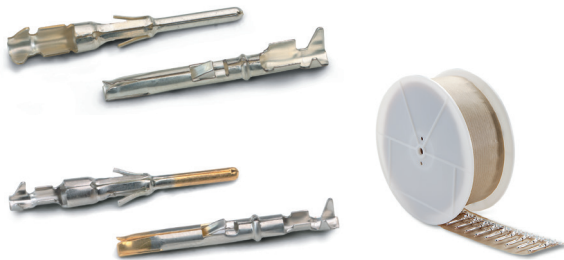


Part number = 1 contact,
sold in bags of 100

AWG	mm ²	Silver		Gold	
		Pin	Socket	Pin	Socket
26-22	0.14-0.37	13162000	13163000	13162500	13163500
20	0.5	13162100	13163100	13162600	13163600
18	0.75-1.0	13162200	13163200	13162700	13163700
16	1.5	13162300	13163300	13162800	13163800
14	2.5	13162400	13163400	13162900	13163900

Complete the Installation	
Crimp Tool: 11147000	Crimp Dies: 11147100
Locator: 11147200	Removal Tool: 11161000

Stamped & Formed Contacts: 1.6 mm diameter
for HD stamped & MC Part # 10383400 & 10383500



Part number = 1 contact,
sold in bags of 100 or 1 reel

* 11223000 and 11228000
are sold in reels of 100 only

Complete the Installation		
For Contacts		For Reel
Crimp Tool:	11147000	Crimp Tool: (incl. tool, die & locator)
Locator:	11147300	26-20 AWG: 11147004
26-16 AWG:	11147300	20-16 AWG: 11147005
		16-14 AWG: 11147006
Crimp Dies:		Removal Tool: 11161000
26-20 AWG:	11147170	
20-16 AWG:	11147180	
16-14 AWG:	11147190	

AWG	mm ²	Silver		Gold		Reel of 200	
		Pin	Socket	Pin	Socket	Pin	Socket
26-20	0.14-0.5	11241100	11231100	11243100	11233100	11240700	11230700
20-16	0.5-1.5	11221000	11236100	11221300	11238100	11220700	11235700
16-14	1.5-2.5	11223500	11228500	—	—	11223000*	11228000*

Reel of 2000

AWG	mm ²	Right-hand Feed - Silver		Right-hand Feed - Gold		Left-hand Feed - Silver	
		Pin	Socket	Pin	Socket	Pin	Socket
26-20	0.14-0.5	11240000	11230000	—	—	11240400	11230400
20-16	0.5-1.5	11220000	11235000	11220100	11235200	11226000	11226500
16-14	1.5-2.5	—	—	—	—	11222700	11227700

Silver Machined Contacts: 2.5 mm diameter
for MC Part # 10382200 & 10382300

Part number = 1 contact,
sold in bags of 100



Complete the Installation			
Crimp Tool: 11147000	Crimp Dies: 11147100		
Locator: 11147200	Removal Tool: 11171000		

AWG	mm ²	Pin	Socket
20	0.5	1121300C	1121800C
18	0.75 - 1.0	1121310C	1121810C
16	1.5	1121320C	1121820C
14	2.5	1121330C	1121830C
12	4.0	1121340C	1121840C

Stamped & Formed Contacts: 2.5 mm diameter
for MC Part # 10383200 & 10383300

Part number = 1 contact, sold in bags of 100 or 1 reel



Complete the Installation			
For Contacts		For Reel	
Crimp Tool: 11147000	Crimp Dies: 20 - 16 AWG: 11153700 16 - 14 AWG: 11153800		
Locator: 11147300	Removal Tool: 11160000		
Crimp Dies: 20 - 16 AWG: 11147180 16 - 14 AWG: 11147190			

AWG	mm ²	Silver		Reel of 200	
		Pin	Socket	Pin	Socket
20 - 16	0.5 - 1.5	11201000	11205000	11208000	11209000
16 - 14	1.5 - 2.5	11202000	11206000	11208500	11209500

Silver Machined Contacts: 3.6 mm diameter
for MC Part # 10382000 & 10382100, 10399800 & 10399900

Part number = 1 contact,
sold in bags of 100



Complete the Installation			
Crimp Tool: 11147000	Locator: 11147210		
Crimp Dies: 16 - 14 AWG: 11147110 12 - 8 AWG: 11147120	Removal Tool: 11171100		

AWG	mm ²	Pin	Socket
16	1.5	1121070C	1121570C
14	2.5	1121060C	1121560C
12	4.0	1121000C	1121500C
10	6.0	1121010C	1121510C
8	10	1121020C	1121520C

Gold Stamped & Formed D-Sub Contacts: 1.0 mm
for MC Part # 10383600 & 10383700

Complete the Installation	
Crimp Tool: 11158400	Removal Tool: 11132500



AWG	mm ²	Pin	Socket
28 - 25	0.08 - 0.2	44429013	44429009
25 - 20	0.2 - 0.52	44429014	44429010

Coax Contacts
for MC Part # 10399200 & 10399300

Complete the Installation	
Crimp Tool: 11147000	Crimp Die: 11147130
Removal Tool: 11171100	



Part number = 1 contact,
sold in bags of 100

Size	Pin	Socket
RG 58	11214200	11219200