

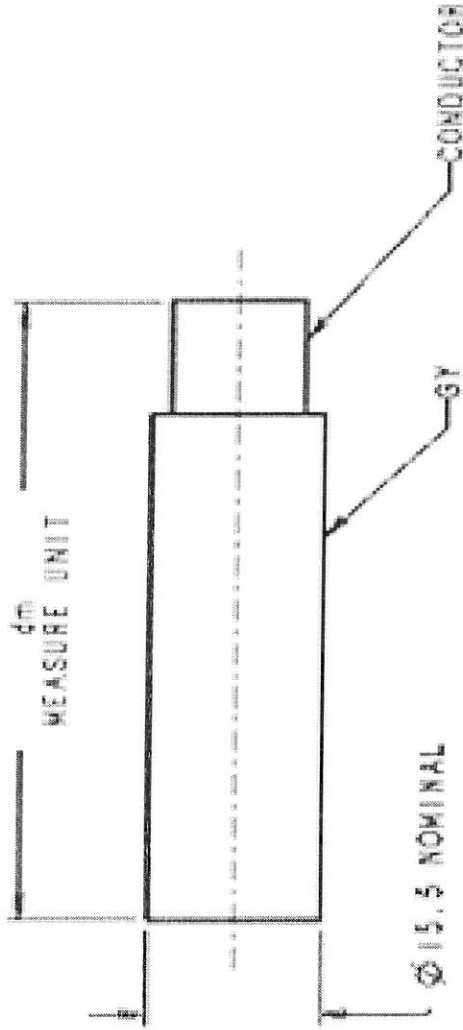
CABLE USA

High Temperature Custom Engineered Cables

PRODUCT DATA SHEET

TO:	JULIE	FROM:	CUSA
COMPANY:	IEWC	ENG. BY:	
PHONE:		DATE:	5/15
FAX:		PAGE	1

CABLE USA PART NUMBER:	542X01U3.CAT
CUSTOMER PART NUMBER:	338-3732
CONDUCTORS:	SIZE: 68mm2
	STRANDING: 1330
	MATERIAL: TPC
INSULATION MATERIAL:	ETFE
INSULATION THICKNESS (NOM):	1.78
NUMBER OF CONDUCTORS:	1
CONDUCTOR COLOR CODE:	Gray
TYPE OF SHIELD/COVERAGE:	N/A
DRAIN WIRE:	N/A
JACKET MATERIAL:	N/A
JACKET THICKNESS (NOM):	N/A
JACKET COLOR:	N/A
MARKINGS METHOD/LEGEND:	N/A
FINISHED DIAMETER (NOM):	n/a
MAXIMUM OPERATING VOLTAGE:	2VDC
MAXIMUM OPERATING TEMPERATURE:	-55 to +150C
AGENCY APPROVALS:	N/A
SPECIAL NOTES:	N/A



CONDUCTOR..... 68mm² / 100 AWG (1330X30 STRANDED TINNED COPPER)
 INSULATION..... ETFE (WALL THICKNESS 1.75 NOM)
 VOLTAGE RATING..... 2000 VDC
 OPERATING TEMP RATING..... -55°C TO 150°C

APPLICATION INFO	
WED	
RADIUS (mm)	182

NOTE A: ASTM B33, ASTM B172

REV	DATE	DESCRIPTION
1		WROUGHT MATL
2		
3		
4		
5		
6		
7		
8		
9		
10		
11		
12		
13		
14		
15		
16		
17		
18		
19		
20		
21		
22		
23		
24		
25		
26		
27		
28		
29		
30		
31		
32		
33		
34		
35		
36		
37		
38		
39		
40		
41		
42		
43		
44		
45		
46		
47		
48		
49		
50		
51		
52		
53		
54		
55		
56		
57		
58		
59		
60		
61		
62		
63		
64		
65		
66		
67		
68		
69		
70		
71		
72		
73		
74		
75		
76		
77		
78		
79		
80		
81		
82		
83		
84		
85		
86		
87		
88		
89		
90		
91		
92		
93		
94		
95		
96		
97		
98		
99		
100		



CATERPILLAR

FOR SPECIFICATIONS REFER TO THE PROPERTY OF CATERPILLAR
 DRAWINGS AND SPECIFICATIONS ARE THE PROPERTY OF CATERPILLAR
 AND ARE NOT TO BE REPRODUCED OR TRANSMITTED IN ANY FORM OR BY ANY MEANS
 WITHOUT THE WRITTEN PERMISSION OF CATERPILLAR

CABLE-BULK (ELECTRICAL)
 (00 AWG) (ETFE)

338-3732

182