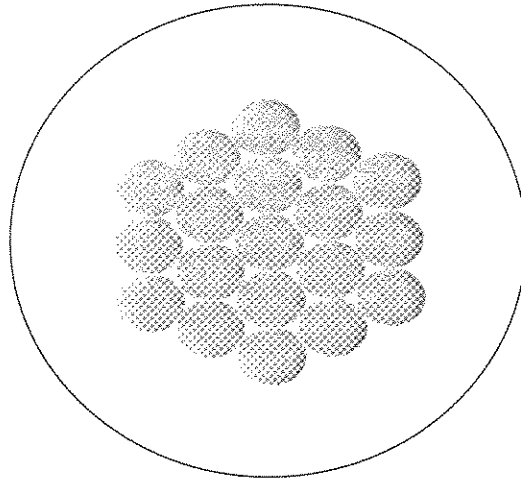


REV.	DESCRIPTION	DATE
0	Initial release.	4/23/2012

General Properties  
Application  
General Composition of Cable

EXRAD 180 16 19/29 BC Powertrain Wire  
Automotive/commercial vehicles  
See Below



**Colors**

- Brown
- Yellow
- Green
- Red
- Blue
- Black
- Red/Wht
- Blue/Wht
- Yellow/Wht
- Black/Wht

**Physical Data**

Description	
1. Conductor:	16 19/29 bare copper
2. Insulation:	EXRAD 180 wall thickness: 16 mil 0.41 mm
3. Print:	N/A

**Dimensions (Nom.)**

inches	mm
0.057	1.45
0.089	2.26

*PLD*  
*4-23-12*


**Electrical Data**

Conductor Resistance::	4.532 ohms/kft 14.869 ohms/km @20° C nominal
Voltage Rating	60 volts maximum

**General Data**

Use:	Applications requiring high temperature and high fluid resistance
Temperature Range:	-40° C to +180° C

Bend Radius:	inches	mm
	0.89	22.6

 <b>CHAMPLAIN CABLE</b> 175 HERCULES DRIVE COLCHESTER, VT 05446 802-664-4200	TITLE	
	16 AWG 19/29 BC EXRAD 180 .016" wall Powertrain wire	
UNLESS OTHERWISE SPECIFIED, DIMENSIONS AND TOLERANCES ARE IN INCHES  DO NOT SCALE THIS DRAWING	DRN.	DATE
	Steve Blum	4/23/2012
	CKD.	DATE
	SIZE	PART NUMBER
	A	TBD
		DOCUMENT NUMBER
		14297
The information on this drawing is the proprietary property of Champlain Cable Corporation, and may not be used, reproduced or disclosed to others, in whole or in part, without written authorization.		PAGE 1 of 1