



INSTALLATION AND OPERATION MANUAL

EZ-VDA2R

Model numbers:
EZ-VDA2R includes power supply with North American plug
EZ-VDA2RX includes worldwide power supply (specify plug)

Video Distribution Amplifier



RDL EZ Series products provide the highest level of value to A/V professionals and A/V users who demand professional quality. For long-term performance, quality and value, you have made the EZ choice. EZ products are made in the USA by RDL, the inventor of application-specific modules bringing decades of experience as the world's leading manufacturer of high-reliability performance products to the A/V industry. Visit the RDL website for hundreds of professional A/V products made in the USA by RDL.



www.rdlnet.com

Decades of Performance, Quality and Value

RDL • 659 N. 6th Street • Prescott, AZ • USA 86301 • Sales: 800-281-2683 • 928-443-9391
Tech Support: 800-933-1780 • 928-778-3554 • RDL Europe Sales & Support: (31) 20-6238-983

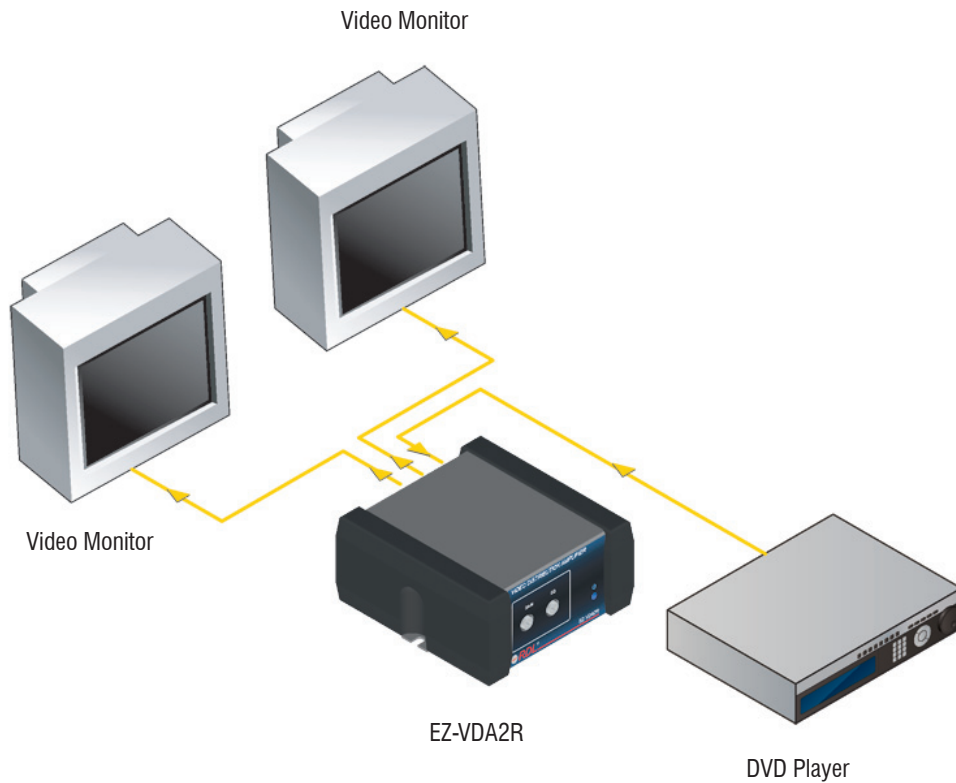
EZ-VDA2R

Video Distribution Amplifier

- Composite Input to Two Composite Outputs
- Front-Panel GAIN and EQ Trimmers
- Operation with NTSC or PAL Signals
- 75 Ω Terminated Input
- Input and Outputs on Gold-Plated RCA Jacks
- Wide Bandwidth > 400 MHz

The EZ-VDA2R is a composite video distribution amplifier with two outputs. The input and outputs are all 75 Ω on RCA connectors. If the outputs are connected to long coaxial cables (typically 100 to 1000 feet) the front-panel gain and equalization trimmers may be adjusted to restore picture clarity. The wide amplifier bandwidth supports high quality video distribution. The EZ-VDA2R is used in stores, houses of worship, restaurants, clubs, home component systems, security and commercial A/V systems.

TYPICAL APPLICATION



www.rdl.net.com . . . www.rdlez.com

GAIN ADJUSTMENT

If long video cables are connected to the output jacks, turn the GAIN control clockwise until the picture brightness appears normal. If short output cables are connected, or if the picture brightness is normal, set the GAIN control fully counter-clockwise.

EQUALIZATION ADJUSTMENT

If long video cables are connected to the output jacks, turn the EQ control clockwise until the picture sharpness appears normal. If short output cables are connected, or if the picture clarity is normal, set the EQ control fully counter-clockwise.

POWER INDICATOR

Glows blue when the product is connected to a valid power source.



24 VDC POWER INPUT

Insert plug from power supply. Rotate 1/4 turn clockwise to lock.

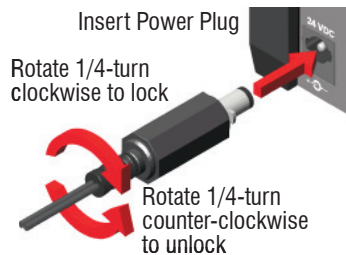
VIDEO OUTPUTS

Connect one or two cables to feed video signals to equipment with 75 ohm composite video inputs.

VIDEO INPUT

Connect a composite video source to the VIDEO INPUT jack. The input jack terminates the source with 75 ohms.

POWER CONNECTION

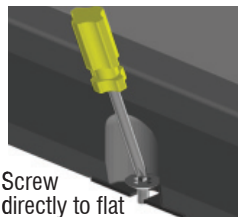


Insert Power Plug

Rotate 1/4-turn clockwise to lock

Rotate 1/4-turn counter-clockwise to unlock

FIXED MOUNTING



Screw directly to flat surface without installing rubber feet.

RUBBER FEET ATTACHMENT



Recess

Bottom View of chassis

Peel backing and stick the 4 rubber feet to chassis in recesses provided.

SELECTED MOUNTING ACCESSORIES Complete accessory listing available at: rdlez.com

EZ-RA6

Rack Adapter for 6 Increments of 1/6 Rack Width



EZ-CC6

Component Chassis for 6 Increments of 1/6 Rack Width



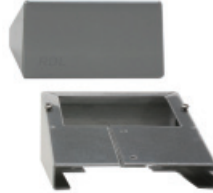
EZ-SMB1

Surface Mount Bezel for 1/6 Rack Width Products



EZ-DC1

Desktop Chassis 1/6 Rack Width



EZ-UCB2

Under-Counter Brackets 1/6 or 1/3 Rack Width



EZ-SD1

Storage Drawer 1/6 Rack Width

Use In Place of Filler Panel
Holds Adapters and Cables
Mounts in EZ-CC6 and EZ-RA6



TYPICAL PERFORMANCE

Input: 75 Ω on RCA jack
Input level: 1 V p-p nominal
Gain: Unity to +6 dB (adjustable)
Bandwidth: > 400 MHz
Coupling: AC
Differential Gain: < 0.1%
Differential Phase: < 0.1 degree
Equalization: Flat to +7 dB @ 50 MHz (adjustable)
Residual Noise: < -90 dB (referenced to 1 V p-p)
Outputs (2): 75 Ω source-terminated on RCA jacks, 1 V p-p nominal (terminated)
24 Vdc power supply current: 20 mA (idle), 30 mA (max.)
Power supply input voltage: 100 to 240 VAC
Warranty: 3 Years; contact RDL technical support department for assistance
Case dimensions: 2.9" (7.4 cm)W x 3" (7.6 cm)D
Mounting size: 1/6 rack width

CE

891-1530

Copyright © 2009 Radio Design Labs, Inc. RDL, Radio Design Labs and the RDL logo are registered trademarks of Radio Design Labs, Inc. Data reflects product at publication time, subject to change without notice. "Made in USA" applies to all EZ products except power supplies.