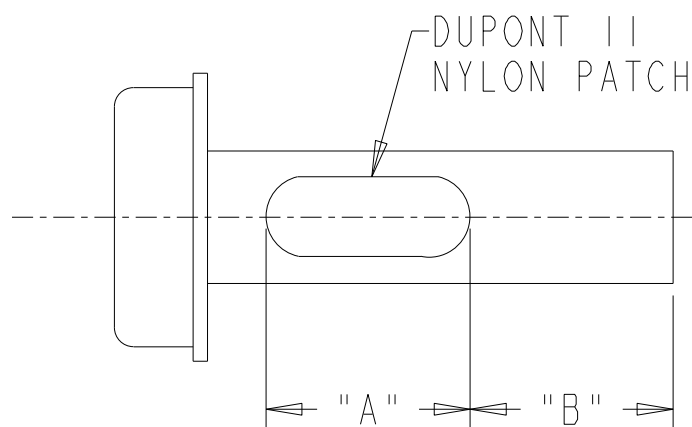


PART NUMBER

FA-230



NOTES:


1. SCREW TO HAVE A DUPONT 11 NYLON PATCH APPLIED APPROXIMATELY "B" THREADS FROM END. (SEE TABLE)
2. THE NYLON PATCH TO BE APPROXIMATELY "A" THREADS IN LENGTH. (SEE TABLE)
3. IF NO "A" OR "B" VALUE IS GIVEN, APPLY PATCH PER INDUSTRY STANDARDS.

| KEITHLEY PART NO. | THD SIZE | LENGTH | HEAD TYPE | HEAD STYLE | MATERIAL | FINISH | PATCH DIM | VENDOR VENDOR P/N |
|-------------------|----------|--------|-----------|---------------------|-----------------|-------------|----------------|-----------------------|
| FA-230-1 | #6-32 | 1/2" | PHILLIPS | PAN HEAD | STAINLESS STEEL | NONE | A=5-6 B=3-4 | |
| FA-230-2 | #8-32 | 1/4" | PHILLIPS | TRUSS HEAD | STAINLESS STEEL | NONE | A=5-6 B=3-4 | |
| FA-230-3 | #6-32 | 3/8" | PHILLIPS | PAN HEAD | STAINLESS STEEL | NONE | A=5-6 B=3-4 | |
| FA-230-4 | #4-40 | 7/16" | PHILLIPS | PAN HEAD | STAINLESS STEEL | NONE | A=5-6 B=3-4 | |
| FA-230-5 | #4-40 | 1-1/4" | PHILLIPS | PAN HEAD | STAINLESS STEEL | NONE | A=5-6 B=3-4 | |
| FA-230-6 | #2-56 | 5/16" | PHILLIPS | PAN HEAD | STEEL | ZINC | A=5-6 B=3-4 | |
| FA-230-7 | #4-40 | 3/8" | SOCKET | SET SCREW CUP POINT | ALLOY STEEL | BLACK OXIDE | A=5-6 B=3-4 | McMaster 91385A108 |
| FA-230-8 | #6-32 | 1/4" | PHILLIPS | PAN HEAD | STAINLESS STEEL | NONE | | |
| FA-230-9 | #6-32 | 1/4" | PHILLIPS | FLAT HEAD UNDERCUT | STAINLESS STEEL | NONE | | |
| FA-230-10 | #4-40 | 1/4" | PHILLIPS | PAN HEAD | STAINLESS STEEL | NONE | | |
| B6 FA-230-11 | #4-40 | 3/8" | PHILLIPS | PAN HEAD | STAINLESS STEEL | NONE | A=5-6 B=3-4 | |
| B7 FA-230-12 | #2-56 | 3/8" | PHILLIPS | PAN HEAD | STEEL | ZINC | A=5-6 B=3-4 | |
| B8 FA-230-14 | #8-32 | 1/2" | PHILLIPS | PAN HEAD | STEEL | ZINC | | |
| B9 FA-230-15 | #4-40 | 5/8" | TORX | FLAT HEAD | STAINLESS STEEL | NONE | A=5-6 B=2-3 | |
| B10 FA-230-16 | #6-32 | 1-3/4" | PHILLIPS | PAN HEAD | STAINLESS STEEL | NONE | A=5-6 B=2-3 | |

ORIGINAL VENDOR: PROGRESSIVE FASTENER

VENDOR P/N: SEE TABLE

RoHS COMPLIANT

| LTR | REVISIONS | APP. | DATE | DRN. | DATE | 2-15-90 |  Keithley Instruments Inc. Cleveland, Ohio 44139 A Tektronix Company |
|-----|-----------|-----------------|------|---------|-----------------|---------|---|
| B4 | 24741 | ADDED -7 | MM | 7/25/00 | CKD. | DATE | |
| B5 | 29273 | ADDED -8 TO -10 | SZ | 3/29/04 | APP. | DATE | |
| B6 | 30182 | ADDED -11 | PS | 12/2/04 | DATE | 3-1-94 | |
| B7 | 40423 | ADDED -12 | JAP | 3/28/05 | FASTENER | | CONFIDENTIAL PROPRIETARY PART NUMBER FA-230 |
| B8 | 44426 | ADDED -14 | JAP | 3/18/08 | | | |
| B9 | 44435 | ADDED -15 | RJL | 8/05/08 | | | |
| B10 | 34273 | ADDED -16 | JAP | 2/21/13 | | | |