

# HITACHI CABLE MANCHESTER

## Customer Specification

HCM - 23100/50

**RFQ #:** 40325

**ITEM DESCRIPTION:** .050 PVC PLANAR RIBBON CABLE, CONSISTING OF 50 CONDUCTORS, 28 AWG, UNSHIELDED, UNJACKETED. (UL) 2651, CSA I A/B

**FLAT PRIMARY:**

**CONDUCTOR:** 28 AWG 7/36 TINNED COPPER  
.015" NOM OD

**INSULATION:** PVC LF GRAY

THE #1 CONDUCTOR IS MARKED WITH A RED POLARITY STRIPE.

U.L. RECOGNIZED AWM STYLE 2651, 105°C, 300V.  
USE: FOR INTERNAL WIRING OF ELECTRONIC EQUIPMENT (SUCH AS COMPUTERS AND ELECTRIC BUSINESS MACHINES) VW-1 AWM.

CANADIAN STANDARDS ASSOCIATION AWM FT1.

**TYPICAL ELECTRICAL CHARACTERISTICS:**

S.E. IMPEDANCE:	105 OHMS (G-S-G @ 3.5 ns)
DIFF. IMPEDANCE:	145 OHMS (G-S @ 3.5 ns)
CAPACITANCE:	14.00 pF/FT (G-S-G @ 1 KHz) 8.90 pF/FT (G-S @ 1 KHz)
TIME DELAY:	1.40 ns/FT NOM
TIME DELAY SKEW:	.035 ns/FT (MAX.)
COND. RESISTANCE:	67.5 OHMS/M' NOM @ 20°C

HITACHI CABLE MANCHESTER, INC. 900 Holt Avenue-East Industrial Park Manchester, N.H. 03109 (603) 669-4347	Drawn By: DSA      Date: 04/21/98 Checked By: JS      Date: 04/21/98 Issued By: MGR      Date: 04/21/98	REV# C
	THIS PRODUCT MADE IN THE U.S.A.	
ITEM: 23100-0050-XXX-XXX-802-P-00100-3984-WE	PAGE 1 of 2 Approved By:      Date:	

# HITACHI CABLE MANCHESTER

## Customer Specification

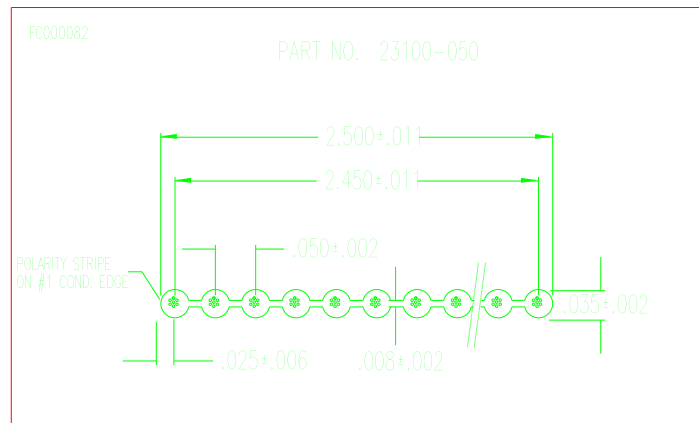
HCM - 23100/50

ENVIRONMENTAL - ROHS COMPLIANT\*

DIRECTIVE 2002/95/EC OF THE EUROPEAN PARLIAMENT AND OF THE COUNCIL ON THE RESTRICTION OF THE USE OF CERTAIN HAZARDOUS SUBSTANCES IN ELECTRICAL AND ELECTRONIC EQUIPMENT.

\*ALLOWABLE LIMITS SUBJECT TO CHANGE

NOTE: COMPLIANT ON DATE OF LATEST REVISION OF HCM SPECIFICATION.



### MARKING:

THE CABLE IS IDENTIFIED WITH THE FOLLOWING PRINT LEGEND:

**E15369**  **AWM STYLE 2651 28 AWG 300V 105C VW-1 - LL50890**  
**CSA AWM I A/B 300V 105C FT1 -- RoHS -- ZZ/DD/YY HR:MN (XXXX)**

WHERE: ZZ = MONTH OF MFG.

DD = DATE OF MFG.

YY = YEAR OF MFG.

HR = HOUR (MILITARY)

MN = MINUTE

XXXX = JOB NUMBER

Rev	Revision	Date	By	Appvd	PAGE 2 of 2
A	ADDED ROHS TO PRINT	06/19/06	ZD	PF	
B	ADDED 105C TO CSA PORTION OR PRINT	04/09/10	JME	KDA	
C	ADDED 300V TO CSA PORTION OF PRINT	04/09/10	JME	JME	