

HITACHI CABLE MANCHESTER

Customer Specification

HCM - 23113/68

RFQ #: 41039

ITEM DESCRIPTION: .025 PVC MICROZIP RIBBON CABLE, CONSISTING OF 68 CONDUCTORS, 30 AWG, UNSHIELDED, UNJACKETED,(UL) 2678, CSA I A/B

FLAT PRIMARY:

CONDUCTOR: 30 AWG 7/38 TINNED COPPER
.012" NOM OD

INSULATION: PVC LF GRAY

THE #1 CONDUCTOR IS MARKED WITH A RED POLARITY STRIPE.

U.L. RECOGNIZED AWM STYLE 2678, 105C, 150V.
USE: FOR INTERNAL WIRING OF ELECTRONIC EQUIPMENT, SUCH AS COMPUTERS AND ELECTRIC BUSINESS MACHINES. VW-1

CANADIAN STANDARDS ASSOCIATION AWM FT1.

TYPICAL ELECTRICAL CHARACTERISTICS:

S.E. IMPEDANCE: 75 OHMS (G-S-G @ 3.5 ns)
110 OHMS (G-S @ 3.5 ns)

CAPACITANCE: 23.30 pF/FT (G-S-G @ 1 KHz)
15.80 pF/FT (G-S @ 1 KHz)

TIME DELAY: 1.62 ns/FT
TIME DELAY SKEW: .030 ns/FT (MAX.)

COND. RESISTANCE: 106 OHMS/1M' @ 20°C

ENVIRONMENTAL - ROHS COMPLIANT*
DIRECTIVE 2002/95/EC OF THE EUROPEAN PARLIAMENT AND OF THE COUNCIL ON THE RESTRICTION OF THE USE OF CERTAIN HAZARDOUS SUBSTANCES IN ELECTRICAL AND ELECTRONIC EQUIPMENT.

*ALLOWABLE LIMITS SUBJECT TO CHANGE

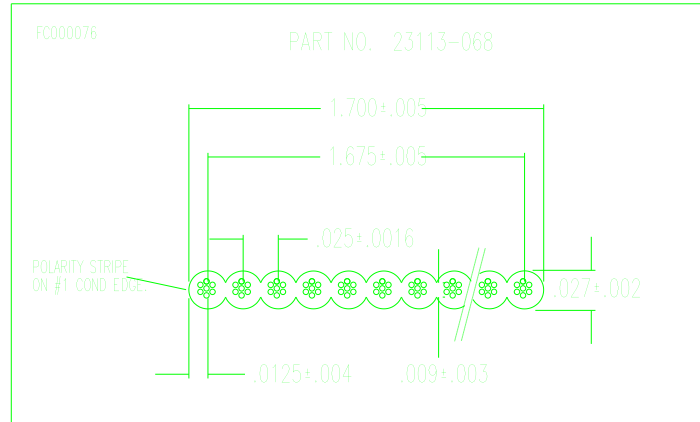
NOTE: COMPLIANT ON DATE OF LATEST REVISION OF HCM SPECIFICATION.

HITACHI CABLE MANCHESTER, INC. 900 Holt Avenue-East Industrial Park Manchester, N.H. 03109 (603) 669-4347	Drawn By: DSA Date: 04/02/98 Checked By: JS Date: 04/02/98 Issued By: MGR Date: 04/03/98	REV# E
	THIS PRODUCT MADE IN THE U.S.A.	
ITEM: 23113-0068-XXX-XXX-802-P-00200-2594-00	PAGE 1 of 2 Approved By: Date:	


HITACHI CABLE MANCHESTER

Customer Specification

HCM - 23113/68



MARKING:

THE CABLE IS IDENTIFIED WITH THE FOLLOWING PRINT LEGEND:
HCM 23113  AWM STYLE 2678 30 AWG 105C 150V VW-1 - LL50890
CSA AWM I A/B 105C 150V FT1 -- RoHS - ZZ/DD/YY HR:MN (XXXX)

WHERE: ZZ = MONTH OF MFG.
DD = DATE OF MFG.
YY = YEAR OF MFG.
HR = HOUR (MILITARY)
MN = MINUTE
XXXX = JOB NUMBER

Rev	Revision	Date	By	Appvd	PAGE 2 of 2
C	UPDATED PRINT & ELECTRICALS	05/17/04	KDA	KDA	
D	CHANGE PRINT LEGEND ADD ROHS	09/16/05	PF	PF	
E	UPDATED PRINT LEGEND TO ADD 105C FOR CSA	08/09/10	DE	JME	