

HITACHI CABLE MANCHESTER

Customer Specification

HCM - 23122/20

RFQ #:

41350

ITEM DESCRIPTION:

DUAL SHIELD RND TO FLAT CABLE, CONSISTING OF 20 CONDUCTORS, 28 AWG, DUAL SHIELDED WITH A PVC JACKET. CM, C(UL)

FLAT PRIMARY:

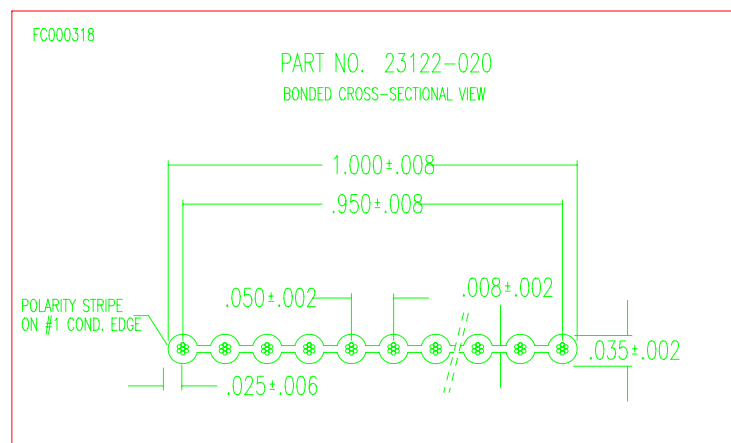
CONDUCTOR:

28 AWG 7/36 TINNED COPPER
.015" NOM OD

INSULATION:

PVC LF

THE #1 CONDUCTOR IS MARKED WITH A RED POLARITY STRIPE.

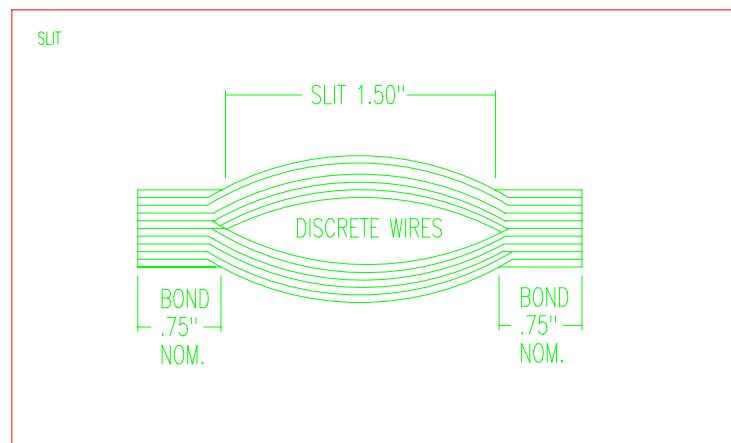


HITACHI CABLE MANCHESTER, INC. 900 Holt Avenue-East Industrial Park Manchester, N.H. 03109 (603) 669-4347	Drawn By: RRC Date: 03/18/97 Checked By: JS Date: 03/19/97 Issued By: RRC Date: 03/19/97	REV# F
	THIS PRODUCT MADE IN THE U.S.A.	
ITEM: 23122-0020-XXX-XXX-000-S-00660-1354-00	PAGE 1 of 3 Approved By: Date:	

HITACHI CABLE MANCHESTER

Customer Specification

HCM - 23122/20



CABLING:

THE EXTRUDED FLAT PRIMARY IS CABLED INTO A ROUND CONFIGURATION WITH A RIGHT HAND LAY AND WRAPPED WITH AN ALUMINUM/POLYESTER TAPE (ALUMINUM SIDE OUT) USING A LEFT HAND LAY. 25% MIN OVERLAP ON TAPE.

BRAID SHIELD:

CONDUCTOR:

10 ENDS 36 AWG TINNED COPPER
85% MIN. COVERAGE

OVERALL JACKET:

PVC LF BLACK
.309" NOM OD
.032" AVG WALL

AGENCY APPROVALS:

UNDERWRITERS LABORATORIES, INC. TYPE CM CLASSIFIED COMMUNICATIONS CABLE FOR GENERAL PURPOSE COMMUNICATIONS USE WITH THE EXCEPTION OF RISERS & PLENUMS, IN ACCORDANCE WITH ARTICLE 800 OF THE NATIONAL ELECTRIC CODE.

U.L. RECOGNIZED AWM STYLE 20381, 105C, 300V.
USE: INTERNAL WIRING OR EXTERNAL INTERCONNECTION OF ELECTRONIC EQUIPMENT, VW-1.

CANADIAN STANDARDS ASSOCIATION AWM FT1.

Rev	Revision	Date	By	Appvd	PAGE 2 of 3
D	UPDATED QUOTE DETAIL	10/07/98	DSA	MG	
E	UPDATED PRINT	12/11/06	ZD	PF	
F	UPDATE TO PRINT LEGEND	10/20/10	DE	JME	

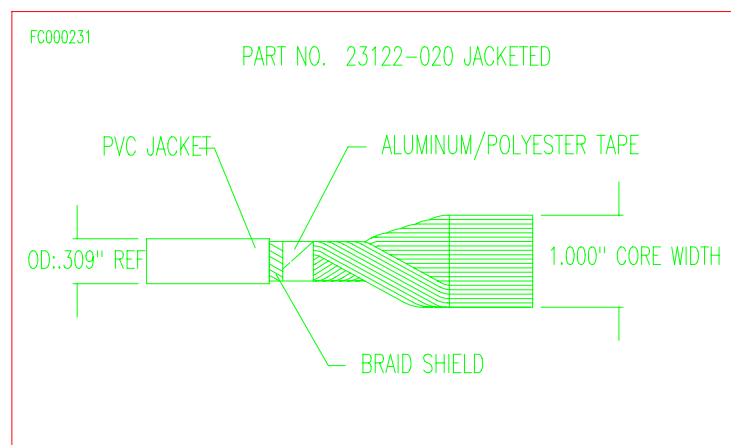
HITACHI CABLE MANCHESTER

Customer Specification

HCM - 23122/20

TYPICAL ELECTRICAL CHARACTERISTICS:

S.E. IMPEDANCE: 65 OHMS (G-S-G @ 3.5 ns)
 CAPACITANCE: 24.5 pF/FT (G-S-G @ 1 KHz)
 TIME DELAY: 1.62 ns/FT NOM
 COND. RESISTANCE: 67.5 OHMS/M' NOM @ 20°C



MARKING:

THE CABLE IS IDENTIFIED WITH THE FOLLOWING PRINT LEGEND:
**HCM 23122 (UL) TYPE CM c(UL) 28 AWG 105C SHIELDED - AWM
 STYLE 20381 300V - LL50890 CSA AWM II B 300V 105C FT1
 - Z/YY (XXXX)**
**WHERE: Z = MONTH OF MFG.
 YY = YEAR OF MFG.
 XXXX = JOB NUMBER**

Rev	Revision	Date	By	Appvd	PAGE 3 of 3
D	UPDATED QUOTE DETAIL	10/07/98	DSA	MG	
E	UPDATED PRINT	12/11/06	ZD	PF	
F	UPDATE TO PRINT LEGEND	10/20/10	DE	JME	