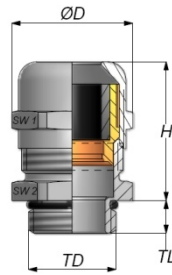
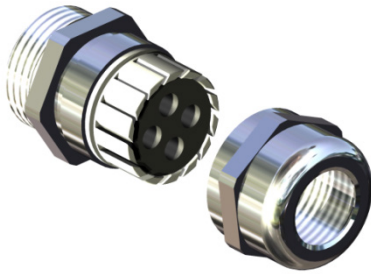


Lutze TOP-T Fittings Metric

Metal Metric



Characteristics:

- Integrated strain relief
- Anti-twist design
- Fitted with 4 hole insert 4x4mm
- Easy to install
- Temperature range -40°C - +100°C / -40°F - +212°F
- Protection class IP68

Fitting Specifications:

Connecting thread	Metric as per EN 60423
Material	Brass, nickel plated
Clamping insert	Polyamide 6
Sealing ring	Neoprene
O-ring	NBR

Part No.	Thread	Clamping Range Ø inch	Clamping Range Ø C	TL mm	SW1 mm	SW2 mm	H mm
METRIC							
FMM20-4x4	M20x1.5	4x0.157"	4x4 mm	8	22	22	35.5
LONG THREAD							
FMM20-L4x4	M20x1.5	4x0.157"	4x4 mm	12	22	22	39.5

Specifications are subject to change without prior notice