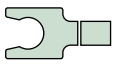
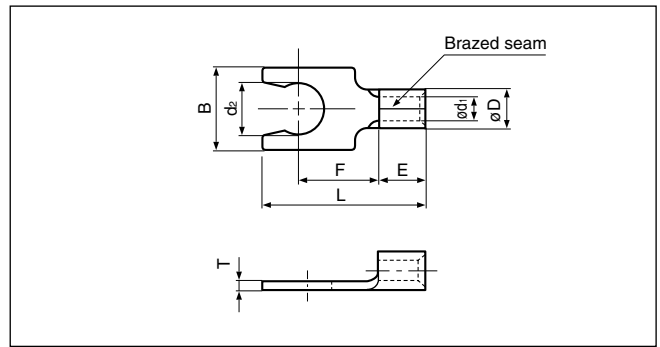
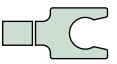


Solderless terminals



# LOCKING SPADE TONGUE (LS type) Non-insulated

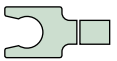


Certificate No.: E42024

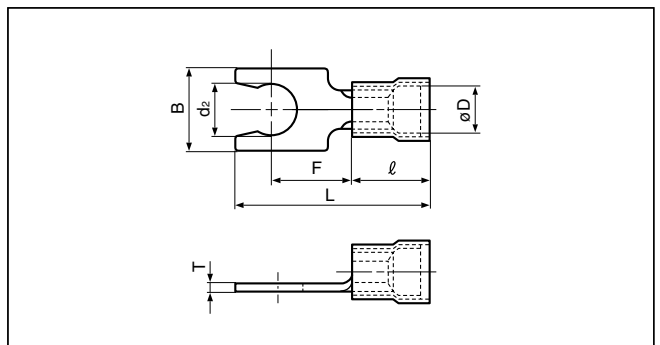
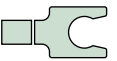
| Applicable Wire<br>AWG#(mm <sup>2</sup> ) | Stud size |        | Part No.   | Standard | Dimensions mm (in.) |            |             |            |            |            |                  |            | Tool No.                                      | Qty/box |
|---|-----------|--------|------------|----------|---------------------|------------|-------------|------------|------------|------------|------------------|------------|---|---------|
|   | American  | Metric |            |          | d <sub>2</sub>      | B          | L           | F          | E          | ø D        | ø d <sub>1</sub> | T          |   |         |
| 22 to 16<br>(0.25 to 1.65)                | 6         | 3.5    | 1.25-3.5LS |          | 3.7 (.146)          | 6.4 (.252) | 13.6 (.535) | 5.9 (.232) | 4.8 (.189) | 3.3 (.130) | 1.9 (.075)       | 0.7 (.028) | YHT-2210<br>YA-1<br>YA-2<br>YA-4<br>BCT-0514L | 1,000   |
|   | 8         | 4      | 1.25-4LS   |          | 4.3 (.169)          | 7.1 (.280) | 16.0 (.630) | 7.2 (.283) |            |            |                  |            |   |         |
|   | 10        | 5      | 1.25-5LS   |          | 5.3 (.209)          | 8.4 (.331) | 17.0 (.669) | 8.2 (.323) |            |            |                  |            |   |         |
| 16 to 14<br>(1.04 to 2.63)                | 6         | 3.5    | 2-3.5LS    |          | 3.7 (.146)          | 6.4 (.252) | 14.0 (.551) | 6.3 (.248) | 4.8 (.189) | 4.0 (.157) | 2.3 (.091)       | 0.8 (.031) | YHT-2210<br>YA-1<br>YA-2<br>YA-4<br>BCT-0514L | 1,000   |
|   | 8         | 4      | 2-4LS      |          | 4.3 (.169)          | 7.1 (.280) | 16.0 (.630) | 7.4 (.291) |            |            |                  |            |   |         |
|   | 10        | 5      | 2-5LS      |          | 5.3 (.209)          | 8.4 (.331) | 17.0 (.669) | 8.4 (.331) |            |            |                  |            |   |         |
| 12 to 10<br>(2.63 to 6.64)                | 8         | 4      | 5.5-4LS    |          | 4.3 (.169)          | 7.9 (.311) | 18.2 (.717) | 7.1 (.280) | 6.8 (.268) | 5.5 (.217) | 3.6 (.142)       | 0.9 (.035) | YHT-2210<br>YA-1, YA-2<br>YA-4<br>BCT-0514L   | 500     |
|   | 10        | 5      | 5.5-5LS    |          | 5.3 (.209)          | 8.4 (.331) | 18.2 (.717) | 7.1 (.280) |            |            |                  |            |   |         |

Note:1) The part numbers indicated in the above table are for products with a brazed seam.  
2) Delivery lead times may vary depending on the product. Contact JST for details.

Solderless terminals



# LOCKING SPADE TONGUE (LS type) Nylon-insulated with copper sleeve



Certificate No.: E42024

| Applicable Wire<br>AWG#(mm <sup>2</sup> ) | Stud size |        | Part No.      | Standard | Dimensions mm (in.) |            |             |            |             |            |            |        | Color   | Tool No. | Qty/box |
|---|-----------|--------|---------------|----------|---------------------|------------|-------------|------------|-------------|------------|------------|--------|---|----------|---------|
|   | American  | Metric |               |          | d <sub>2</sub>      | B          | L           | F          | l           | ø D        | T          |        |   |          |         |
| 22 to 16<br>(0.25 to 1.65)                | 6         | 3.5    | FND1.25-3.5LS |          | 3.7 (.146)          | 6.4 (.252) | 18.4 (.724) | 5.9 (.232) | 9.6 (.378)  | 4.0 (.157) | 0.7 (.028) | Red    | YNT-2216<br>YA-1<br>YA-2<br>YA-4<br>BCT-0514L | 1,000    |         |
|   | 8         | 4      | FND1.25-4LS   |          | 4.3 (.169)          | 7.1 (.280) | 20.8 (.819) | 7.2 (.283) |             |            |            |        |   |          |         |
|   | 10        | 5      | FND1.25-5LS   |          | 5.3 (.209)          | 8.4 (.331) | 21.8 (.858) | 8.2 (.323) |             |            |            |        |   |          |         |
| 16 to 14<br>(1.04 to 2.63)                | 6         | 3.5    | FND2-3.5LS    |          | 3.7 (.146)          | 6.4 (.252) | 18.8 (.740) | 6.3 (.248) | 9.6 (.378)  | 4.7 (.185) | 0.8 (.031) | Blue   | YNT-1614<br>YA-1<br>YA-2<br>YA-4<br>BCT-0514L | 1,000    |         |
|   | 8         | 4      | FND2-4LS      |          | 4.3 (.169)          | 7.1 (.280) | 20.8 (.819) | 7.4 (.291) |             |            |            |        |   |          |         |
|   | 10        | 5      | FND2-5LS      |          | 5.3 (.209)          | 8.4 (.331) | 21.8 (.858) | 8.4 (.331) |             |            |            |        |   |          |         |
| 12 to 10<br>(2.63 to 6.64)                | 6         | 3.5    | FND5.5-3.5LS  |          | 3.7 (.146)          | 7.9 (.311) | 25.4(1.000) | 7.1 (.280) | 14.0 (.551) | 6.5 (.256) | 0.9 (.035) | Yellow | YNT-1210S<br>YA-4<br>BCT-0514L                | 500      |         |
|   | 8         | 4      | FND5.5-4LS    |          | 4.3 (.169)          | 7.9 (.311) | 25.4(1.000) | 7.1 (.280) |             |            |            |        |   |          |         |
|   | 10        | 5      | FND5.5-5LS    |          | 5.3 (.209)          | 8.4 (.331) | 25.4(1.000) | 7.1 (.280) |             |            |            |        |   |          |         |

Note:1) The part numbers indicated in the above table are for products with a brazed seam.  
2) Delivery lead times may vary depending on the product. Contact JST for details.