



Network Infrastructure for the Enterprise

Preferred Parts – North America

PANDUIT[®]

Network Infrastructure for the Enterprise

Today's enterprise IP networks support ever-expanding converged applications for voice, data, and video, as well as functions such as intelligent lighting, security, safety systems, and more.

Panduit Enterprise Networks provide the industry's most comprehensive and holistic portfolio of products and services that enable sustainable, energy-efficient enterprises. Innovative design features provide easy installation, reduced maintenance costs, and improved network reliability and flexibility.

This catalog features the most common offering for an enterprise physical infrastructure deployment. For the complete enterprise offering, please contact your local Panduit representative or visit us at <http://www.panduit.com/en/solutions/enterprise-solutions>.



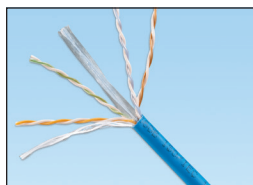
Table of Contents

Copper Cable.....	3	Fiber Enclosures.....	8
RJ45 Patch Cords.....	3	Fiber Adapter Module and Panels.....	8
RJ45 Jack Module.....	4	Racks, Shelves and Accessories.....	8
Patch Panels, Kits and Accessories.....	4	Cable Managers.....	9
Faceplates.....	5	Zone Enclosures.....	9
Surface Mount Box.....	5	Enterprise Cabinets.....	10
Fiber Optic Cable.....	6	Grounding.....	10
Fiber Build Up Kits.....	6	Labeling.....	10
Fiber Connectors.....	6	Security Devices.....	11
Fiber Patch Cords and Pigtails.....	7	Tools.....	11
Cable Ties.....	7		

Copper Cable



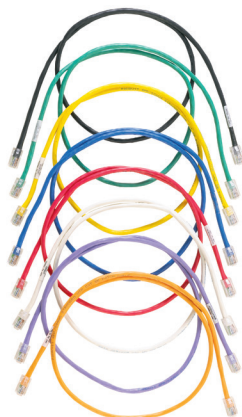
PUP6AM04BU-UG



PUP6004BU-UY

Part Number	Description	UOM	MOQ
Unshielded			
PUP6ASD04BU-UG	Category 6A, 4-pair, small diameter, U/UTP, plenum, Blue.	Ft.	9000
PUR6ASD04BU-CG	Category 6A, 4-pair, small diameter, U/UTP, riser, Blue.	Ft.	9000
PUP6AM04BU-UG	Category 6A, 4-pair, 23 AWG, U/UTP, plenum, Blue.	Ft.	5000
PUR6AM04BU-UG	Category 6A, 4-pair, 23 AWG, U/UTP, riser, Blue.	Ft.	5000
PUP6004BU-UY	Enhanced Category 6, 4-pair, 23 AWG, UTP, plenum, Blue, 1000ft/305m.	Ft.	9000
PUR6004BU-UY	Enhanced Category 6, 4-pair, 23 AWG, U/UTP, riser, Blue, 1000ft/305m.	Ft.	9000
PUP5504BU-UY	Category 5e, 4-pair, 24 AWG U/UTP, plenum, Blue, 1000ft/305m.	Ft.	13000
PUR5504BU-UY	Category 5e, 4-pair, 24 AWG U/UTP, riser, Blue, 1000ft/305m.	Ft.	13000
Outside Plant Cable			
PUO6C04BL-U	Category 6, 4-pair outside plant, 23 AWG, U/UTP construction with polyolefin insulation, Black.	Ft.	9000

RJ45 Patch Cords



UTP6ASD*M**



UTP6ASD*



UTPSP*

Part Number	Description	Std. Pkg. Qty.	Std. Ctn. Qty.
Category 6A 28 AWG			
UTP28X*	Category 6A 28 AWG UTP patch cord, Off White.	1	10
UTP28X*BU	Category 6A 28 AWG UTP patch cord, Blue.	1	10
Category 6A 26 AWG			
UTP6ASD*	Category 6A 26 AWG UTP patch cord, Off White.	1	10
UTP6ASD*BU	Category 6A 26 AWG UTP patch cord, Blue.	1	10
Category 6			
UTPSP*Y	Category 6 UTP patch cord, Off White.	1	10
UTPSP*BUY	Category 6 UTP patch cord, Blue.	1	10
Category 6 28 AWG			
UTP28SP*	Category 6 28 AWG UTP patch cord, Off White.	1	10
UTP28SP*BU	Category 6 28 AWG UTP patch cord, Blue.	1	10
Category 5e			
UTPCH*Y	Category 5e UTP patch cord, Off White.	1	10
UTPCH*BUY	Category 5e UTP patch cord, Blue.	1	10
Category 5e 28 AWG			
UTP28CH*	Category 5e 28 AWG UTP patch cord, Off White.	1	10
UTP28CH*BU	Category 5e 28 AWG UTP patch cord, Blue.	1	10

*Standard lengths include: 3, 5, 7, 10ft.
 Contact Customer Service for additional colors and lengths.
 Bulk packaging available: Add -Q for pack of 25.

RJ45 Jack Module



CJ6X88TGBL



CJ688TGBU

Part Number	Description	Std. Pkg. Qty.	Std. Ctn. Qty.
Unshielded			
CJ6X88TGBL	Category 6A RJ45 UTP Mini-Com [®] Jack, Black.	1	50
CJ6X88TGBU	Category 6A RJ45 UTP Mini-Com [®] Jack, Blue.	1	50
CJ6X88TGIW	Category 6A RJ45 UTP Mini-Com [®] Jack, International White.	1	50
CJ688TGBL	Category 6 RJ45 UTP Mini-Com [®] Jack, Black.	1	50
CJ688TGBU	Category 6 RJ45 UTP Mini-Com [®] Jack, Blue.	1	50
CJ688TGIW	Category 6 RJ45 UTP Mini-Com [®] Jack, International White.	1	50
CJ5E88TGBL	Category 5e RJ45 UTP Mini-Com [®] Jack, Black.	1	50
CJ5E88TGBU	Category 5e RJ45 UTP Mini-Com [®] Jack, Blue.	1	50
CJ5E88TGIW	Category 5e RJ45 UTP Mini-Com [®] Jack, International White.	1	50

Contact Panduit Customer Service for other colors.
Bulk packages available: Add -24 for pack of 24 or -C for pack of 100.

Patch Panels, Kits, and Accessories



CPP24FMWBLY



CPPA48HDWBLY



CPPA48FMWBLY



DP48688TGY



SRB19BLY



SRB19D5BL
SRB19D7BL

Part Number	Description	Std. Pkg. Qty.	Std. Ctn. Qty.
Modular			
CPP24FMWBLY	24-port patch panel, flush mount.	1	10
CPPA24FMWBLY	24-port angled patch panel, flush mount.	1	10
CPPLA48WBLY	48-port angled patch panel with labels, with six CFFPL4 faceplates.	1	10
CPPA48FMWBLY	48-port angled patch panel, flush mount.	1	10
CPP48HDWBLY	48-port, high density patch panel, 1 RU.	1	10
CPPA48HDWBLY	48-port, high density angled patch panel, 1 RU.	1	10
Data-Patch[™] Patch Panels			
DP246X88TGY	24-port, flat , 1 RU, Category 6A RJ45 UTP Data-Patch [™] Patch Panel, Black.	1	10
DP486X88TGY	48-port, flat, 2 RU, Category 6A RJ45 UTP Data-Patch [™] Patch Panel, Black.	1	1
DP24688TGY	24-port, flat, 1 RU, Category 6 RJ45 UTP Data-Patch [™] Patch Panel, Black.	1	1
DP48688TGY	48-port, flat, 1 RU, Category 6 RJ45 UTP Data-Patch [™] Patch Panel, Black.	1	1
DP245E88TGY	24-port, flat, 1 RU, Category 5e RJ45 UTP Data-Patch [™] Patch Panel, Black.	1	1
DP485E88TGY	48-port, flat, 1 RU, Category 5e RJ45 UTP Data-Patch [™] Patch Panel, Black.	1	1
Strain Relief			
SRB19BLY	Strain relief bar.	1	10
SRB19D5BL	Deep strain relief bar, extends 5".	1	10
SRB19D7BL	Deep strain relief bar, extends 7".	1	10
SRB19BLY	Strain relief bar.	1	10
SRB19BLY	Strain relief bar quick release bracket kit.	1	10

Faceplates



CFPL4BL



CFP4

CFPE2

Part Number	Description	Std. Pkg. Qty.	Std. Ctn. Qty.
Furniture Faceplates			
CFFP4BL	Furniture faceplate, 4-port, standard, Black.	1	10
CFPL4BL	Furniture faceplate with labeling, 4-port, standard, Black.	1	10
CFFPHM4BL	Furniture faceplate, 4-port, Herman Miller, Black.	1	10
Classic Faceplates			
CFP2**	Classic faceplate single gang, 2-port.	1	10
CFP4**	Classic faceplate single gang, 4-port.	1	10
CFPL2**Y	Classic faceplate single gang with label, 2-port.	1	10
CFPL4**Y	Classic faceplate single gang with label, 4-port.	1	10
Executive Faceplates			
CFPE2**Y	Executive faceplate single gang, 2-port.	1	10
CFPE4**Y	Executive faceplate single gang, 4-port.	1	10

**Colors available: EI (Electric Ivory), IW (Off White), and WH (White).

Surface Mount Box



CBX2IW-AY

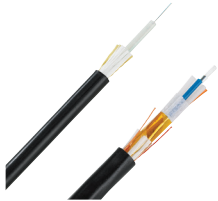
Part Number	Description	Std. Pkg. Qty.	Std. Ctn. Qty.
CBX1IW-A	Surface mount box, 1-port, Off White.	1	10
CBX1WH-A	Surface mount box, 1-port, White.	1	10
CBX2IW-AY	Surface mount box, 2-port, Off White.	1	10
CBX2WH-AY	Surface mount box, 2-port, White.	1	10
CBX4IW-AY	Surface mount box, 4-port, Off White.	1	10
CBX4WH-AY	Surface mount box, 4-port, White.	1	10
CBXF61W-AY	Surface mount box, 6-port, multimedia, Off White.	1	10

Contact Panduit Customer Service for other colors.

Fiber Optic Cable



FODPX24Y



FOCRX12Y

Part Number	Description	UOM	MOQ*
Distribution Cable			
FODPX12Y	12-fiber OM3 multimode OFNP (plenum) rated non-ribbon distribution cable.	Ft.	—
FODPX24Y	24-fiber OM3 multimode OFNP (plenum) rated non-ribbon distribution cable.	Ft.	—
FODRX12Y	12-fiber OM3 multimode OFNR (riser) rated non-ribbon distribution cable.	Ft.	—
FODRX24Y	24-fiber OM3 multimode OFNR (riser) rated non-ribbon distribution cable.	Ft.	—

Part Number	Description	UOM	MOQ*
Indoor/Outdoor Central Tube Cable			
FOCRZ12Y	12-fiber OM4 ONFR (riser) rated indoor/outdoor central tube cable.	Ft.	—
FOCRX12Y	12-fiber OM3 ONFR (riser) rated indoor/outdoor central tube cable.	Ft.	—
FSCR912Y	12-fiber OS2 singlemode ONFR (riser) rated indoor/outdoor central tube cable.	Ft.	—

Additional flame ratings available upon request.
*Contact Customer Service for available lengths.

Fiber Build Up Kits



FO12CB

Part Number	Description	Std. Pkg. Qty.	Std. Ctn. Qty.
Fiber Build Up Kits			
FO12CB	Build up 250µm fiber to 900µm loose buffered coating size; for twelve fibers.	1	1
FO6CB	Build up 250µm fiber to 900µm loose buffered coating size; for six fibers.	1	1

Fiber Connectors



FLCSCBUY



FSCSBUY

Part Number	Description	Std. Pkg. Qty.	Std. Ctn. Qty.
OptiCam™ Pre-Polished Connectors			
FLCDMCXAQY	LC 50/125µm OM3/OM4 multimode duplex connector, Aqua boot.	1	10
FLCSCXAQY	LC 50/125µm OM3/OM4 multimode simplex connector, Aqua boot.	1	10
FLCSCBUY	LC 9/125µm singlemode simplex fiber optic connector for 900µm.	1	10
FLCDSCBUY	LC 9/125µm singlemode duplex fiber optic connector for 900µm.	1	10
OptiCam™ Field Polished Connectors			
FLCSMBLY	LC 50/125µm OM2/OM3/OM4 simplex connector, Aqua boot.	1	10
FLCSCBUY	LC 9/125µm OS2 singlemode simplex connector for 900µm.	1	10
FSCMCXAQ	SC 50/125µm OM2/OM3/OM4 duplex connector, Aqua boot.	1	10
FSCSBUY	SC 9/125µm OS2 singlemode simplex connector, Blue boot.	1	10

Fiber Patch Cords and Pigtails



FX2ERLNLNSNM***



FX23RSNSNSNM***



FX1BN1NNNSNM001



FX1BN3NNNSNM001

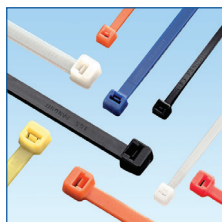
Part Number	Description	Std. Pkg. Qty.	Std. Ctn. Qty.
Patch Cords			
F92ERLNLNSNM002	2-fiber OS2 LC duplex to LC duplex OFNR (riser) rated 1.6mm jacketed cable Std. IL – 2m.	1	10
F92ERLNLNSNM003	2-fiber OS2 LC duplex to LC duplex OFNR (riser) rated 1.6mm jacketed cable Std. IL – 3m.	1	10
FX2ERLNLNSNM001	2-fiber OM3 10GbE LC duplex to LC duplex patchcord – 1m.	1	10
FX2ERLNLNSNM002	2-fiber OM3 10GbE LC duplex to LC duplex patchcord – 2m.	1	10
FX2ERLNLNSNM003	2-fiber OM3 10GbE LC duplex to LC duplex patchcord – 3m.	1	10
Pigtails			
F91BN1NNNSNM001	1-fiber OS2 900µm buffered patchcord no jacket LC to pigtail, Std. IL – 1m.	1	10
F91BN3NNNSNM001	1-fiber OS2 900µm buffered patchcord no jacket SC to pigtail, Std. IL – 1m.	1	10

Length in meters. 1, 2, 3, 5, and 10 meter lengths. Contact Panduit customer service for additional lengths.

Cable Ties



HLS



PLT

Part Number	Description	Std. Pkg. Qty.	Std. Ctn. Qty.
HLS-75R0	Hook and loop roll, 75'L (22.9m), 0.75"W (19.1mm), Black.	1	10
HLS-15R0	Hook and loop roll, 15'L (4.6m), 0.75"W (19.1mm), Black.	1	10
TTS-35RX0	Hook and loop roll, 10 roll pack, low profile, 35'L (10.7m), .75"W (19.1mm), Black.	1	10
PLT3I-C	Cable tie, 11.4"L (290mm), Intermediate, nylon, Natural.	100	1000
PLT3S-C2	Cable tie, 11.5"L (292mm) Standard, nylon, Red.	100	1000
PLT8LH-C0	Cable tie, 27.6"L (701mm), Light-Heavy, weather resistant, Black.	100	2000
PLT4S-M30	Cable tie, 14.5"L (368mm), Standard, heat stabilized, Black.	1000	10000
PLT3S-M2	Cable tie, 11.5"L (292mm) Standard, nylon, Red.	1000	10000
PLT4I-M	Cable tie, 14.5"L (368mm), Intermediate, nylon, Natural.	1000	10000

Fiber Enclosures



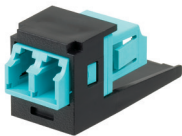
FRME1



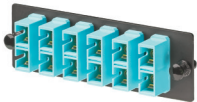
FCE1U

Part Number	Description	Std. Pkg. Qty.	Std. Ctn. Qty.
FRME1	1 RU enclosure; holds three FAPs/cassettes, with two slack spools, and sliding tray	1	1
FCE1U	1 RU enclosure; holds up to four FAPs/cassettes/splice modules with a sliding tray.	1	1
FRME1U	1 RU enclosure; holds up to four FAPs/cassettes; with a sliding tray.	1	1
FRME2	2 RU enclosure; holds up to six FAPs/cassettes; with a sliding tray.	1	1
FRME4	4 RU enclosure; holds up to twelve FAPs/cassettes; with a sliding tray.	1	1
FWME2	Wall mount fiber enclosure with two FAP openings and two slack spools.	1	1
FAPB	Blank fiber adapter panel – reserves space for future use.	1	1

Fiber Adapter Module and Panels



CMDAQSCZBL



FAP6WAQDSCZ

Part Number	Description	Std. Pkg. Qty.	Std. Ctn. Qty.
Fiber Adapter Modules			
CMDSAQLCZBL	OM3/OM4 duplex LC Sr./Sr. Mini-Com™ Module Adapter, Aqua/Black, zirconia split sleeve.	1	10
Fiber Adapter Panels (FAP)			
FAP12WAQDLCZ	OM3/OM4 FAP loaded with twelve LC Duplex fiber adapters (Aqua) zirconia ceramic split sleeves.	1	10
FAP12WBUDLCZ	OS2 FAP loaded with twelve LC duplex fiber adapters (Blue) zirconia ceramic split sleeves.	1	10
FAP6WBUDLCZ	OS2 FAP loaded with six LC duplex fiber adapters (Blue) zirconia ceramic split sleeves.	1	10
FAP6WAQDLCZ	OM3/OM4 FAP loaded with six LC Duplex Fiber adapters (Aqua) zirconia ceramic split sleeves.	1	10
FAP6WBUDSCZ	OS2 FAP loaded with six SC duplex fiber adapters (Blue) zirconia ceramic split sleeves.	1	10

Racks, Shelves and Accessories



R4PCN

Part Number	Description	Std. Pkg. Qty.	Std. Ctn. Qty.
Racks			
R2P	2 post rack, 45 RU, with threaded rails.	1	1
R4PCN	4 post rack, 45 RU with cage nut rails, 760mm deep.	1	1
Rack Accessories			
S1224-C	#12-24 screws.	100	1000
CNWS1224-C	#12-24 cage nut with screws.	100	1000
CNWSM6-C	M6 cage nut with screws.	100	1000

Cable Managers



WMPVHC45E



PRV8



WMPSE

Part Number	Description	Std. Pkg. Qty.	Std. Ctn. Qty.
-------------	-------------	----------------	----------------

Vertical Managers

WMPV22E	NetRunner™ Vertical Cable Manager, front and rear, 22 RU, 4"x 5".	1	10
WMPV45E	NetRunner™ Vertical Cable Manager, front and rear, 45 RU, 4"x 5".	1	10
WMPVF45E	NetRunner™ Vertical Cable Manager, front only, 45 RU.	1	10
WMPVHC45E	NetRunner™ Vertical Cable Manager, front and rear, 45 RU, 6" x 6".	1	10
PRV6	PatchRunner™ Vertical Cable Manager, front and rear 6 inch.	1	—
PRVF6	PatchRunner™ Vertical Cable Manager, front only 6 inch.	1	—
PRV8	PatchRunner™ Vertical Cable Manager, front and rear 8 inch.	1	—
PRV12	PatchRunner™ Vertical Cable Manager front and rear 12 inch.	1	—

Doors

PRD6	PatchRunner™ 6 Inch (152mm) Dual Hinge Door for 84 inches high.	1	—
PRD8	PatchRunner™ 8 Inch (203mm) Dual Hinge Door for 84 inches high.	1	—
PRD12	PatchRunner™ 12 Inch (305mm) Dual Hinge Door.	1	1

Horizontal Managers

WMPSE	PatchLink™ Horizontal Cable Manager, front and rear, 1 RU.	1	1
WMPFSE	PatchLink™ Horizontal Cable Manager, front only, 1 RU.	1	1
WMP1E	Horizontal cable manager front and rear, 2 RU.	1	1
WMPF1E	Horizontal cable manager front only, 2 RU.	1	1

Zone Enclosures



PZICEA



PZICEE

Part Number	Description	Std. Pkg. Qty.	Std. Ctn. Qty.
PZICEA	Active in-ceiling zone cabling enclosure with hinged door gas-assist air cylinders; accepts up to 6 RU of standard 19" patch panels, includes mounting brackets and integrated horizontal slack manager, AC power provisions, fan assembly, air dam, and electrical junction box.	1	—
PZICEE	Economical passive in-ceiling zone cabling enclosure. Accepts to 8 RU of standard 19" patch panels. Includes mounting brackets and integrated horizontal slack manager. White. 23.50"H x 23.50"W x 13.43"D (596.9mm x 596.9mm x 341.1mm).	1	—

Enterprise Cabinets



E6412B2



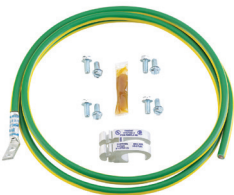
E6212B1

Part Number	Description	Std. Pkg. Qty.	Std. Ctn. Qty.
E6412B2	Enterprise cabinet, 24 RU, single hinge perforated front and rear doors with keyed swing handles, (2) solid single piece side panels with ¼ turn locks, and casters. Fully assembled, Black. Dimensions: 46.7"H x 23.5"W x 42.0"D (1187mm x 600mm x 1070mm).	1	—
E6212B1	Enterprise cabinet, 12 RU, single hinge perforated front and rear doors with keyed swing handles, (2) solid single piece side panels with ¼ turn locks, and casters. Fully assembled, Black. Dimensions: 25.7"H x 23.5"W x 42.0"D (654mm x 600mm x 1070mm).	1	—

Grounding



GB4B0624TPI-1



RGCBNJ660PY

Part Number	Description	Std. Pkg. Qty.	Std. Ctn. Qty.
CNBK	Bonding Cage Nut Kit.	1	—
GB2B0306TPI-1	Grounding busbar, BICSI 1/4" x 2" x 12" (6.4mm x 51mm x 305mm).	1	—
GB4B0624TPI-1	Grounding busbar, BICSI 1/4" x 4" x 20" (6.4mm x 102mm x 508mm).	1	—
GB4B0612TPI-1	Grounding busbar, BICSI 1/4" x 4" x 12" (6.4mm x 102mm x 305mm).	1	—
GB2B0304TPI-1	Grounding busbar, BICSI 1/4" x 2" x 10" (6.4mm x 51mm x 254mm).	1	—
GPQC10-1/0	Access floor grounding clamp, 7/8" (22.2mm) square, 1 - 1 1/8" (25.4 - 28.6mm) round.	1	—
RGCBNJ660P22	Jumper kits, Common Bonding Network (CBN), #6 AWG (16mm ²) jumper, 60" (1.52m) length.	1	—
RGCBNJ660PY	Jumper kits, Common Bonding Network (CBN), #6 AWG (16mm ²) jumper, 60" (1.52m) length.	1	—
RGRKCBNJY	Jumper kit, rack grounding retrofit equipment.	1	—
RGRB19U	Grounding busbar kits, 19" (483mm) length, 20 mounting holes, 5/8" (15.9mm) hole spacing.	1	—
RGRB19Y	Grounding busbar kits, 19" (483mm) length, 14 mounting holes, 1/2" (12.7mm) hole spacing.	1	—
RGS134-1Y	Grounding strip kits, one, 78.65" (2m) x 0.67" (17mm) x 0.05" (1.27mm) strip.	1	—

Labeling



LS8EQ-KIT

Part Number	Description	Std. Pkg. Qty.	Std. Ctn. Qty.
LS8EQ-KIT	Panduit® PanTher™ Hand-Held Label Printing System in kit. Includes LS8EQ printer with QWERTY keypad, one cassette of S100X150VAC self-laminating labels, six AA alkaline batteries, LS8E-ACS, LS8-CASE, LS8-PCKIT, LS8-IB, LS8-WS, quick reference card and operator's manual. USE FOR LABELS THAT MUST BE PRINTED ON THE JOB SITE.	1	1
LJSL5-Y3-2.5	Laser/inkjet, self-laminating label, adhesive polyester, 1.00" W x 1.33" H, 0.47" POA, Clear/White, 52 per package.	1	10
S100X150YAJ	Laser/inkjet, self-laminating label, polyester, 1.00" W x 1.50" L, 0.50" POA, Clear/White.	1	10
S100X150VAC	P1 cassette, self-laminating label, vinyl, 1.00" W x 1.50" H, 0.50" POA, Clear/White.	1	10
PROG-EM2GO	Easy-Mark™ Labeling Software for PC, supplied on USB flash drive. For pre-printing communications labels on laser/inkjet printer.	1	10

Security Devices



PSL-LCAB-BU



FLCCLIW-X



PSL-DCJB



PSL-DCPLRX

Part Number	Description	Std. Pkg. Qty.	Std. Ctn. Qty.
PSL-LCAB-BU	LC duplex adapter blockout device, ten devices (Blue) and one removal tool (Black).	1	20
FLCCLIW-X	LC patch plug lock-in device, ten devices and one removal tool.	10	100
PSL-DCJB-BL	Jack module blockout device, ten block-outs (Black) and one removal tool (Black).	1	20
PSL-DCJB-BU	Jack module blockout device, ten block-outs (Blue) and one removal tool (Black).	1	20
PSL-DCJB	Jack module blockout device, ten block-outs (Red) and one removal tool (Black).	1	20
PSL-DCPLRX-BL	Recessed RJ45 plug lock-in device, ten devices (Black) and one installation/removal tool (Black).	1	20
PSL-DCPLRX-BU	Recessed RJ45 plug lock-in device, ten devices (Blue) and one installation/removal tool (Black).	1	20
PSL-DCPLRX	Recessed RJ45 plug lock-in device, ten devices (Red) and one installation/removal tool (Black).	1	20

Tools



EGJT



TGJT



FCAMKIT

Part Number	Description	Std. Pkg. Qty.	Std. Ctn. Qty.
EGJT	TG jack termination tool.	1	—
TGJT	TG jack termination tool, for high-volume installations.	1	—
CJAST	Copper cable jacket stripper.	1	1
CWST	Copper wire snips.	1	1
PDT110	110 punchdown tool.	1	1
CBOT24K	Cable bundle organizing tool.	1	10
FIELDKIT	Field polish fiber optic termination kit for all field polish connectors.	1	—
FCAMKIT	OptiCam™ Termination Kit for pre-polished connectors.	1	1



PANDUIT®

Panduit Corp.
World Headquarters
Tinley Park, IL 60487

800.777.3300

www.panduit.com