

Features

- Fully configurable for a wide variety of production and signal distribution applications
- Any signal path required in Broadcast production can be integrated into a LightBox or LightCube enclosure.
- Extremely rugged case/enclosures
- Runs on AC or battery
» Anton/Bauer or IDX
- Single mode or multimode configurations.
- Available with a wide variety of optical connectors:
» Single: ST, SC, LC
» Multi: Delphi/PH, MX, OpticalCON, SMPTE 304M
- Can be linked w/ another FieldFiber Unit or rack-mounted configurations
- Designed & built in New York
- SEVEN year warranty

Applications

- ENG
- EFP
- Sports
- Military
- Harsh/Remote locations

HalfCube



LightCube



LightBox
1430



LightBox
1440



BullDog

LightBox, LightCube and BullDog Are The Customizable Solutions For Unlimited Fiber Optic Flexibility

Customize Your Field Unit

The MultiDyne family of highly portable FieldFiber™ units includes the LightBox™, LightCube™, and BullDog™ systems, bringing full camera and signal distribution support to hard-to-reach areas or camera positions located far from the on-site production truck or studio. Rugged enclosures housing vital components ensure reliable operation, even in harsh environment conditions. Typical applications include ENG, sports, military and any field application where battery-powered equipment is required.

All MultiDyne FieldFiber units are fully customizable, offering virtually any signal configuration. Each FieldFiber unit can be linked via tactical fiber cable or hybrid cable to other field boxes or a rack-mounted configuration at the other end. With over 25 LightBrix™ components to choose from, almost any practical signal count can be integrated into a FieldFiber System. Just grab it by the handle and go.

All Signals In One Box

Extend a simple ENG camera or link an OB truck to an eight-camera production, complete with audio, intercom, data and return signals to the set. LightBox and LightCube systems are limited only by the size of the connector panel on each ruggedized enclosure. The modular BullDog is unlimited. Internal optical and electronic multiplexors insure

that all of the signals travel cleanly in each direction in as few fiber strands as possible. Choose virtually any combination of these signals in either direction:

- | | | |
|--------------------------------------|---|---|
| • 1.5 or 3Gb/s HD/SDI | • Party-Line Intercom:
» Clear-Com
» RTS TW
» Reidel Digital | • Camera Control/ Serial Data:
RS232/422/485 |
| • Bi/tri-level sync | • Matrix Intercom Panels:
» Clear-Com Matrix+
» RTS ADAM
» Reidel Artist | • 10/100/GigE Ethernet |
| • Composite analog video | • AES audio | • L-Band |
| • Mic and/or line-level analog audio | • Time Code | • RF/wireless mic antennas |
| • Tally/GPIs | • 4-Wire Intercom | • DVI, RGB/HV |
| | | • HDMI |
| | | • KVM |

Robust and Always On

FieldFiber units can be configured to run on AC Power and/or 12VDC power. Optional V-Mount and Anton/Bauer Gold Mount battery plates are available to insure that the system stays running, even if power on the cord is lost.

MultiDyne Innovation

The FieldFiber systems all incorporate the proven connectivity solutions of MultiDyne's decades of experience outfitting production environments for OB vans and production control rooms to create a finely tuned solution for your most challenging productions.

Designed and built in New York.



BullDog: Unlimited Configuration Possibilities

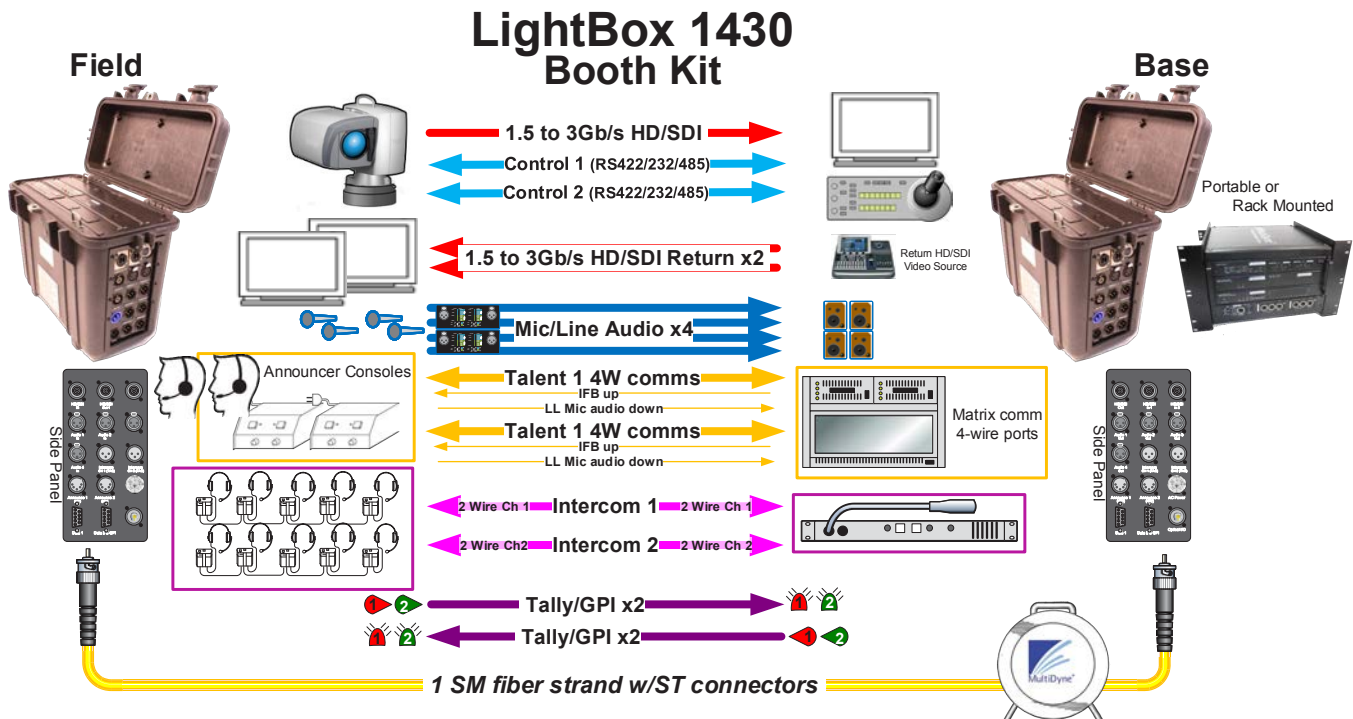
MultiDyne's modular BullDog integration system allows configuration of custom portable fiber transport units using the entire range of LightBrix modules. Interlocking panels, connectors and handles are machined from aircraft aluminum, insuring they can stand up to the harshest handling and environments. While economical and robust BullDog solutions can be created with only the features needed initially, this "erector-set" approach permits expansion in the future as requirements change and grow.



FieldFiber Solutions

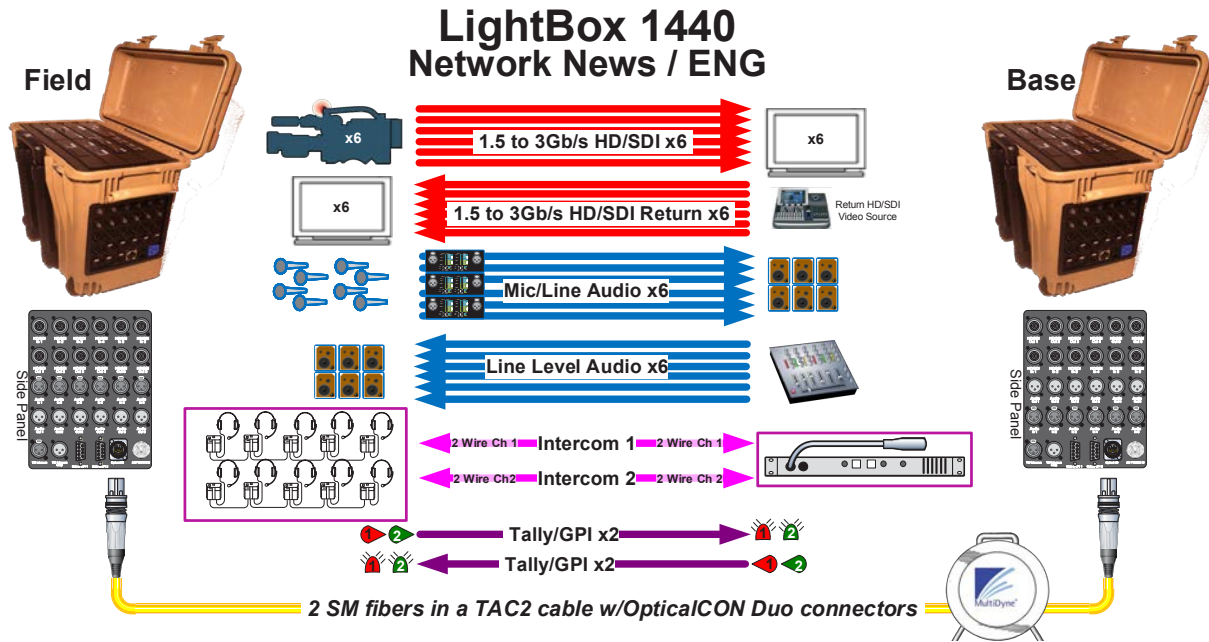
Example #1: Small Sports Booth Kit

When a regional sports broadcaster needs to set up a small Announce Booth with two announcers, a robotic camera, and some additional production personnel, all they need is a single strand of fiber and their LightBox 1430 system.



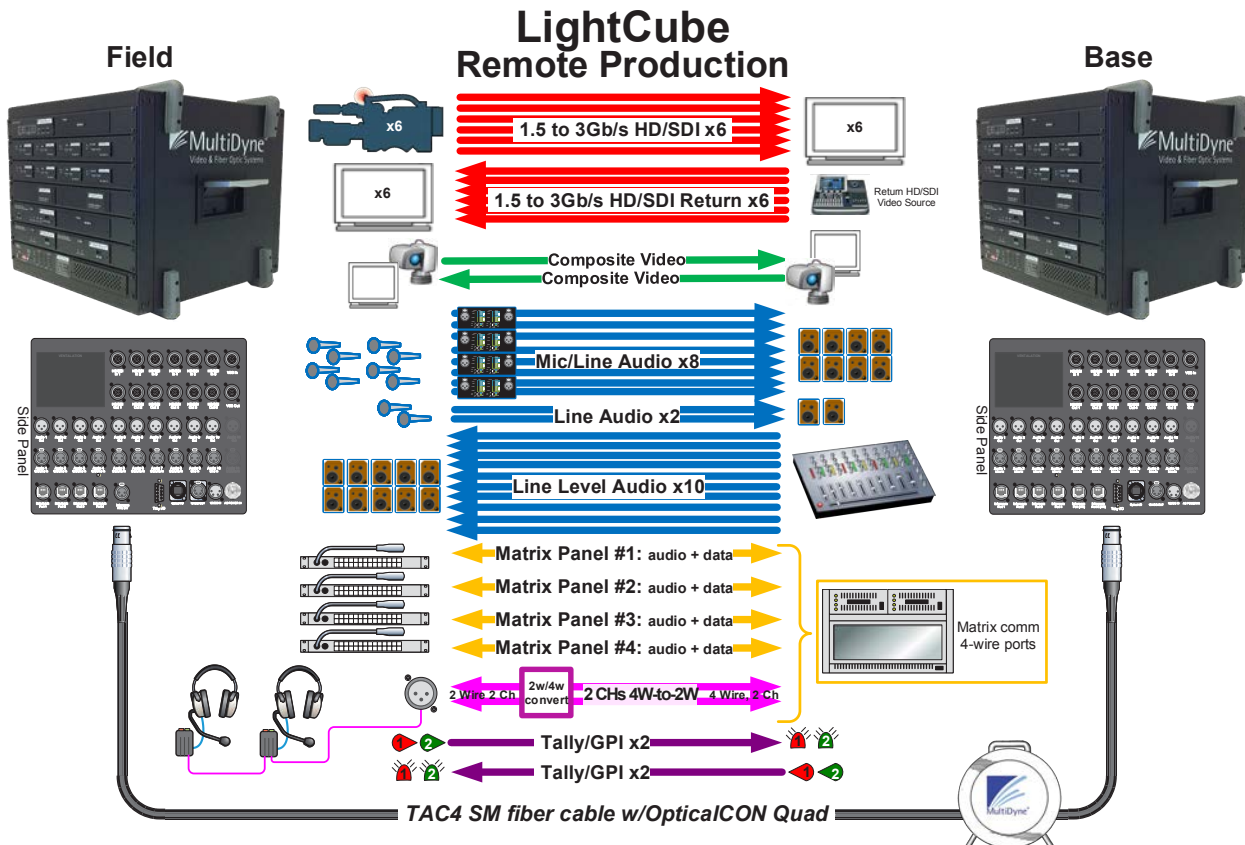
Example #2: Multi-Camera Network News Production

Network news crews around the world depend on MultiDyne LightBox and LightCube systems for single camera links, or for large productions. The six-camera configuration shown below is used by a U.S. network news team that broadcasts weekly concerts by the hottest music acts from a prominent location near their New York studios during their top-rated morning newscasts.



Example #3: LightCube for large remote production

The largest in the MultiDyne Field Fiber Family, the LightCube provides space for up to 25 LightBrix modules and 47 connectors. An entire production can be transported via a single fiber cable using this industry standard workhorse.



FieldFiber Family Components and Accessories:



LightBox 1430
Rugged portable fiber system enclosure: small
Top Panel Capacity: 12 LBU*
Max Connector ports: 15



LightBox 1440
Rugged portable fiber system enclosure: large w/wheels
Top Panel Capacity: 20 LBU*
Max Connector ports: 42



HalfCube
Medium ruggedized fiber system enclosure
Panel Capacity: 16 LBU*
Max Connector ports: 36



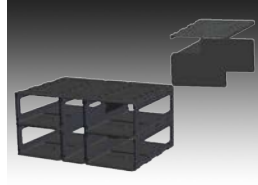
LightCube
Large ruggedized fiber system enclosure
Panel Capacity: 28 LBU*
Max Connector ports: 69



LightBrix Modules
Three (LightBrixUnit) sizes:
A: Triple wide: ...3 LBU
B: Double wide: ...2 LBU
C: Single width: ...1 LBU



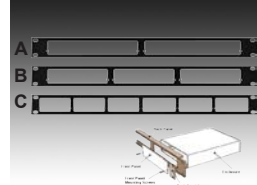
Battery Plates
Optional battery plates provide power if no AC is available, or backup if power is lost.
Anton/Bauer or V-Mount.



Bulldog Modular System
Rugged machined steel components to configure any combination of LightBrix modules & connectors



Cube-RM Kits
19" rack-mounting kits for HalfCube & LightCube systems.



Rack-Mount Kits
For rack-mounting A, B, and C LightBrix modules in stationary environments (trucks, control rooms, etc.)



MC-①②③(h)③(b)④
Fiber optic cable assemblies, various connectors, lengths (TAC1, TAC4, TAC6, TAC12 available)

Ordering Information:

① Fiber Cable

SH..... SMPTE Hybrid cable (wet)
Tx..... Tactical fiber cable (dry)
..... "x" = 1, 2, 4, 6, or 12 SM fiber strands
...Example: "T4" = four-strand "TAC4" cable

② Cable Length

0000-to-9999..... Length in feet (4 digits)

③ Fiber Connector (hub end 1st, bitter end 2nd)

SIP..... SMPTE 304M in-line plug (FUW, wet)
SIR... SMPTE 304M in-line recept (PUW, wet)

D2P..... OpticalCON Duo (NK02, wet or dry)
Q4P..... OpticalCON Quad (NK04, dry)
M2P..... MX Mini ExBeam Plug (dry)
STx/SCx/LCx..... STs, SCs, 2LCs (breakout, dry) Example: "ST4" = four STs
Others (Fischer, Tajimi, more) available

④ Reel

XX..... No reel
SS..... Small reel
SM..... Medium reel
SL..... Large reel
Contact MultiDyne for reel capacities, other options

LightBrix Modules:

	HD-3500	HD-3540	HD-3521	HD-8Pack	HD-12Pack	HD-18Pack	HD-3000	HD-3000-2T	DVM-2000	DVM-2500	DAM-1000	DAM-1500	DAM-2000	DAM-2500	Spider40	FMX-GE1000	DVI-6000	USB-200	SL-2100	FM-501G	LightMic2	Multicomm	JUC-E48	LightPower	
HD/SDI	1	1	1	1-6	1-12	1-18	1	2	1																
Composite Analog Video				1-6	1-12	1-18			1	1															
Sync (bi- & tri-level)		①	①																						
Audio: Analog (balanced) / AES Stereo	4/2	4/2							6/0	8/0	2/0	2/0	6/0	8/0	40/0										
Mic Preamp																						2			
Analog intercom (4W)		2																							
Analog Intercom (2W)																									
2-to-4-wire Intercom conversion																								2	
Control (RS232/422/485)									2>	2	2>	2	2>	2											
GPI/Tally	5		5							1															
Ethernet (10/100/GigE)																	1								
RGB HV, RGsb, YsUV, YcCrCb, UXGA, SUXGA and UXGA, Component.																	1								
DVI Dual Link/RGB-HV, YUV, YPrPb																	1								
DVI-D / HDMI																	1								
USB 2.0																			1						
L-Band																				1					
CATV & RF/Wireless Mics																					1				
Remote power via hybrid fiber cable																									14V
Internal 12VDC/120-220AC power*																									*
Native Fiber Strand Count:	1	1	1	1	1	1	1	1or2	1or2	1	1	1	1	1	1	1	1	1	1	1	1	0	0	0	0
Lambda Count	3	3	3	6	12	18	1	2	2	1	2	1	2	1	2	1	2	1	2	1	1	0	0	0	0
Mechanical Configuration	B	B	B	B	Bx2	Bx3	C	C	C	B	B	B	B	B	B	A	B	B	C	B	B	C	C	N/A	B*

Configuration Notes:

- LightBrix modules come in 1, 2, and 3 LBU widths, and can be integrated into any FieldFiber enclosure.
- Chose FieldFiber enclosures with enough LBU space to accommodate the LightBrix modules & the connectors required.
- *"LightPower" power supply always requires 2 LBUs.
- Up to 18 "Lambdas" (or wavelengths) can be multiplexed onto a single strand of fiber to accommodate the number of fiber strands available in your cables or infrastructure.