



## V-System™ Compatible Mounting Accessories

**EGR enclosures feature V-System-ready sides with small laser knockout holes on a 5-1/4" grid. V-System brackets and accessories use the grid to provide highly flexible mounting options for large and small AV components, power strips, cabling, and even rackrail. Brackets can be used in any combination, vertically or horizontally, to meet the needs of installers.**

V-System accessory brackets provide mounting points for equipment and other system elements such as rackrail and lacer bars. Models are available in fixed and slotted hole patterns, and with various standoffs, for flexibility. Here are some examples:



V-System sub-plates bridge the mounting grid to provide wider mounting surfaces and feature a versatile mounting pattern.

Cable Manager Brackets (6)	Cable Tie Points (15)	8" Cable/Wire Management Ties with Mounting Studs (12)	Pair of Accessory Brackets	Pair of Telescoping Accessory Brackets	Rackrail Brackets (4)	Aluminum Mounting Plate	L-Brackets	Pair of Pull Handles	4 Pack of Gland Grommets	Vent Blocker Kit
CMB-6	CTP-15	TW12-S	EGR-ACCB	EGR-ACCB-T	EGR-RRB	EGR-SUB	LBKT-1.5 (2) LBKT-1.5-8 (8) LBKT-2.5 (2) LBKT-2.5-8 (8)	EGR-HDL	GK-3G GK-1X7G	VBK-P28

Part #	3" Front or Rear Extender	Cable Entry Rear Door	Solid Front Door	Vented Front Door	Plexi Front Door	Rear Rail Kit (Pair)
EGR-4428	EGR-44-EXT3	EGR-RDC44	FD-44	LVFD-44	PFD-44	EGR-RR44
EGR-4028	EGR-40-EXT3	EGR-RDC40	FD-40	LVFD-40	PFD-40	EGR-RR40
EGR-3528	-	EGR-RDC35	FD-35	LVFD-35	PFD-35	EGR-RR35
EGR-2428	-	EGR-RDC24	FD-24	LVFD-24	PFD-24	EGR-RR24
EGR-2128	-	EGR-RDC21	FD-21	LVFD-21	PFD-21	EGR-RR21

3 Space Panel w/ Two 69 CFM Fans	3 Space Panel w/ Two 69 CFM Fans and Proportional Speed Thermostatic Controller	Fan Kit for EGR Rear Door (Two 69 CFM Fans)	Fan Kit for Rear Door w/ Controller (Two 69 CFM Fans)	Skirted Caster Base (adds 4")	Inner Platform Base	Solid Base w/ LKO	1, 2, or 3 Bay Thermolaminate Top	Chassis Support Angles	Wrinkle Powder Coat Finish Blank Panels
EFP-2DC	EFP-2DC-FC	FAN2-DC	FAN2-DC-FC	CBS-EGR-28	BS-EGR-28	SBS-EGR-28	EGR-T1-28*	EGR-CSA-28	WSB1 (1 space)
-	-	-	-	-	-	-	EGR-T2-28*	-	WSB2 (2 space)
-	-	-	-	-	-	-	EGR-T3-28*	-	WSB3 (3 space)
-	-	-	-	-	-	-	-	-	WSB4 (4 space)

\*Custom tops available call for details. Replace 'xx' with AG = Aged Cherry, DC = Dark Cherry, DP = Dark Pecan, DS = Darkstone, EA = Ebony Ash, GS = Graystone, PS = Pepperstone, HM = Honey Maple, LW = Light Walnut, MP = Maple, SG = Shark Gray, WG = Wenge.



# SRB Series Seismic Certified Riser Base and Accessories

## SRB Series Seismic Certified Riser Base

Designed to provide the same cable management facilities as our standard riser bases, but may be used in areas of high seismicity – Zone 4 or Seismic Design Category (SDC) “D”. The SRB Series seismic certified riser bases have been rigorously tested to satisfy the following codes and standards: 2007 & 2010 CBC; 2006, 2009 & 2012 IBC; ASCE 7-05 (2005 Edition) & ASCE 7-10 (2010 Edition) and the 2006 & 2009 editions of NFPA 5000 for use in areas of high seismicity – Zone 4 or Seismic Design Category (SDC) “D”. These are designed for Mission Critical and/or High-Importance Installations in locations with the highest level of seismicity and top floor or rooftop installations including those within UBC and CBC Essential facilities or IBC, ASCE 7, and NFPA 5000 Seismic Use Group III facilities. For all codes, the Importance factor  $I_p$  is 1.5.

With standard 24" height (custom heights available upon request), these riser bases are constructed of substantial 11-gauge steel. Accepts standard angles to support surrounding raised floor tiles. Available for select enclosures, these riser bases require the use of seismic brackets (see below for part #s). Seismic certified riser bases on MRK, VRK, DRK, WMRK and WRK Series



Part #	Description	Accommodates	Seismic Brackets (1) set required per rack	Part #	Description	Accommodates	Seismic Brackets (1) set required per rack
SRB-1-MRK-2624	1 bay riser base	MRK 26" depth racks	MRK-Z4	SRB-2-WRK-3224	2 bay riser base	WRK 32" depth racks	WRK-Z4
SRB-2-MRK-2624	2 bay riser base	MRK 26" depth racks	MRK-Z4	SRB-3-WRK-3224	3 bay riser base	WRK 32" depth racks	WRK-Z4
SRB-3-MRK-2624	3 bay riser base	MRK 26" depth racks	MRK-Z4	SRB-1-WMRK-3124	1 bay riser base	WMRK 31" depth racks	WMRK-Z4
SRB-1-MRK-3124	1 bay riser base	MRK 31" & VRK 31" depth racks	MRK-Z4, VRK-Z4	SRB-2-WMRK-3124	2 bay riser base	WMRK 31" depth racks	WMRK-Z4
SRB-2-MRK-3124	2 bay riser base	MRK 31" & VRK 31" depth racks	MRK-Z4, VRK-Z4	SRB-1-WMRK-3624	1 bay riser base	WMRK 36" depth racks	WMRK-Z4
SRB-3-MRK-3124	3 bay riser base	MRK 31" & VRK 31" depth racks	MRK-Z4, VRK-Z4	SRB-2-WMRK-3624	2 bay riser base	WMRK 36" depth racks	WMRK-Z4
SRB-1-MRK-3624	1 bay riser base	MRK 36" & VRK 36" depth racks	MRK-Z4, VRK-Z4	SRB-1-WMRK-4224	1 bay riser base	WMRK 42" depth racks	WMRK-Z4
SRB-2-MRK-3624	2 bay riser base	MRK 36" & VRK 36" depth racks	MRK-Z4, VRK-Z4	SRB-2-WMRK-4224	2 bay riser base	WMRK 42" depth racks	WMRK-Z4
SRB-3-MRK-3624	3 bay riser base	MRK 36" & VRK 36" depth racks	MRK-Z4, VRK-Z4	SRB-1-WMRK-4824	1 bay riser base	WMRK 48" depth racks	WMRK-Z4
SRB-1-MRK-4224	1 bay riser base	MRK 42" & VRK 42" depth racks	MRK-Z4, VRK-Z4	SRB-2-WMRK-4824	2 bay riser base	WMRK 48" depth racks	WMRK-Z4
SRB-2-MRK-4224	2 bay riser base	MRK 42" & VRK 42" depth racks	MRK-Z4, VRK-Z4	SRB-1-DRK-3124	1 bay riser base	DRK 31" depth racks	MRK-Z4
SRB-3-MRK-4224	3 bay riser base	MRK 42" & VRK 42" depth racks	MRK-Z4, VRK-Z4	SRB-2-DRK-3124	2 bay riser base	DRK 31" depth racks	MRK-Z4
SRB-1-MRK-4824	1 bay riser base	MRK 48" & VRK 48" depth racks	MRK-Z4, VRK-Z4	SRB-1-DRK-3624	1 bay riser base	DRK 36" depth racks	MRK-Z4
SRB-2-MRK-4824	2 bay riser base	MRK 48" & VRK 48" depth racks	MRK-Z4, VRK-Z4	SRB-2-DRK-3624	2 bay riser base	DRK 36" depth racks	MRK-Z4
SRB-3-MRK-4824	3 bay riser base	MRK 48" & VRK 48" depth racks	MRK-Z4, VRK-Z4	SRB-1-DRK-4224	1 bay riser base	DRK 42" depth racks	MRK-Z4
SRB-1-WRK-2724	1 bay riser base	WRK 27" depth racks	WRK-Z4	SRB-2-DRK-4224	2 bay riser base	DRK 42" depth racks	MRK-Z4
SRB-2-WRK-2724	2 bay riser base	WRK 27" depth racks	WRK-Z4	SRB-1-DRK-4824	1 bay riser base	DRK 48" depth racks	MRK-Z4
SRB-3-WRK-2724	3 bay riser base	WRK 27" depth racks	WRK-Z4	SRB-2-DRK-4824	2 bay riser base	DRK 48" depth racks	MRK-Z4
SRB-1-WRK-3224	1 bay riser base	WRK 32" depth racks	WRK-Z4	<b>Custom heights &amp; depths available on request 9"- 24"</b>			

## Protective Grommet Strip

Place this flexible grommet material around openings and knockouts for additional cable protection. Fits any material up to 1/8" thick. Includes 30 ft. of black grommet.



Part #	Description
GR-30	grommet, 30 feet

## Grommets

Grommets protect cables, and can be used on any 4" trade-size electrical knockout or used on 4-1/2" fan knockouts on Middle Atlantic Products top options. Allows for ganging without using expensive electrical fittings. GK-4G gland grommet blocks dust and helps control airflow.

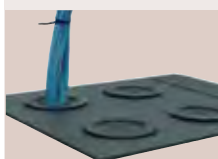


**GK4**  
mounted in ganged ERKs

### Grommet Ring - GK4



### Gland Grommet - GK-4G



shown mounted on MW-4FT top option

Part #	Description	Qty
GK-1X7G	1" x 7" gland grommet ring	4
GK-3G	3" gland grommet ring	4
GK-4G	4" gland grommet	4
GK4	4" grommet ring	4

