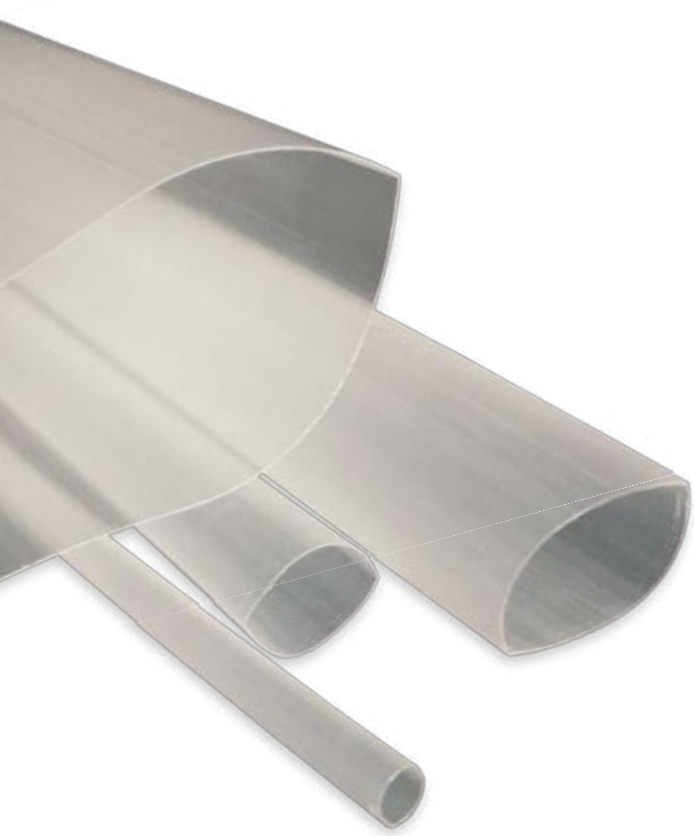


SPECIALTY MATERIALS **HEAT SHRINKABLE TUBING**

HSK-600 KYNAR®

FEATURES

- 2:1 shrink ratio
- Translucent, thin wall, semi-rigid tubing
- Highly flame retardant
- Excellent dielectric properties
- Highly resistant to most industrial fuels, chemicals and solvents
- Outstanding abrasion, cut-through, high impact and high temperature resistance
- High degree of mechanical strength
- Meets UL, CSA and Military specifications



USES

- Applications requiring high-temperature performance
- Electrical insulation and strain relief of high temperature wires, solder joints, terminals and connections
- Automotive wiring, fuse coverings
- Jacketing for resistors, capacitors and other components
- Military wire markers

SPECIFICATIONS

- UL VW-1
- CSA OFT
- AMS 3632
- SAE-AMS-DTL-23053/8



SPECIALTY MATERIALS **HEAT SHRINKABLE TUBING**

HSK-600 KYNAR®

TECHNICAL DATA

- Shrink Ratio: 2:1
- Minimum Recommended Shrink Temperature: 175°C (347°F)
- Operating Temperature Range: -55°C to 175°C
- Longitudinal Shrinkage: +1/-10%
- Physical / Electrical / Chemical Properties:
 - Specific Gravity: 1.7
 - Tensile Strength: 5500 psi
 - Ultimate Elongation: 350%
 - Secant Modulus: (2%) 123000 psi
 - Low Temperature Flexibility: 4 hrs. @ -55°C No cracking
 - Flammability: Self-extinguishing
 - Volume Resistivity: 10¹⁴ ohm-cm
 - Dielectric Strength: 900 vpm
 - Corrosion Resistance: Non-corrosive
 - Fuel, Oil, Solvent, Acids and Alkalis Resistance: Excellent

SPECIFICATIONS

- UL VW-1
- CSA OFT
- AMS 3632
- SAE-AMS-DTL-23053/8

Size	Expanded I.D. Minimum		Recovered I.D. Maximum		Recovered Wall Nominal		Standard Packaging (per box) 4-Foot Lengths
	in.	mm	in.	mm	in.	mm	Box Contents
3/64	.046	1.17	.023	0.58	.010	0.25	1,000'
1/16	.063	1.60	.031	0.79	.010	0.25	1,000'
3/32	.093	2.36	.046	1.17	.010	0.25	1,000'
1/8	.125	3.18	.062	1.57	.010	0.25	1,000'
3/16	.187	4.75	.093	2.36	.010	0.25	800'
1/4	.250	6.35	.125	3.18	.012	0.30	500'
3/8	.375	9.53	.187	4.75	.012	0.30	500'
1/2	.500	12.70	.250	6.35	.012	0.30	400'
5/8	.625	15.88	.313	7.94	.014	0.36	200'
3/4	.750	19.05	.375	9.53	.017	0.43	200'
1	1.000	25.40	.500	12.70	.019	0.48	120'
1 1/2	1.500	38.10	.750	19.05	.020	0.51	96'

- Standard Color: Translucent