

Bottle Shapes, MIL style

- Helashrink 100 Series, with rib

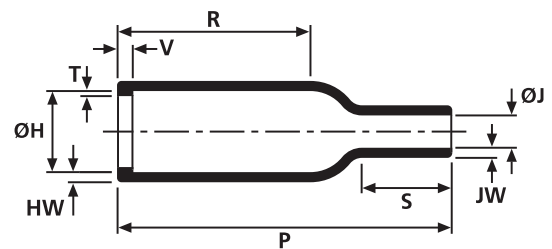
This style is used in conjunction with a circular grooved adaptor providing strain relief and environmental sealing when used in conjunction with one of our complementary adhesives.



104-4 supplied / fully recovered.



a: Expanded form (supplied)



b: Fully recovered form (after heating)

Sizes and Type Table												
Type	ØH min. a	ØH max. b	ØJ min. a	ØJ max. b	P ± 10%	R ± 10%	HW ± 20%	JW ± 20%	V ± 10%	T ± 20%	S nom	
1030-4	12.0	9.8	6.0	2.0	19.0	8.0	1.0	0.5	1.5	0.5	4.6	
1031-4	12.0	9.8	6.0	2.0	15.0	4.0	1.0	0.5	1.5	0.5	4.6	
1037-4	9.0	5.6	9.0	2.0	19.0	9.0	1.0	0.6	1.5	0.6	4.5	
1009-1	9.0	5.6	4.0	3.2	27.0	14.0	1.0	0.5	1.6	0.9	7.5	
113-4	10.7	7.9	4.6	2.0	25.4	14.5	1.3	1.0	3.0	1.0	4.6	
104-4	16.5	7.9	16.5	3.8	25.4	14.2	1.3	1.3	3.0	1.0	6.9	
105-4	23.4	10.4	23.4	5.6	38.1	14.2	1.5	1.5	3.0	1.0	10.2	
106-4	31.0	14.2	31.0	6.6	55.4	22.9	1.8	1.8	3.0	1.0	10.2	
101-4	31.0	17.8	31.0	7.1	67.0	38.1	2.0	2.0	3.0	1.0	17.8	
102-4	36.1	22.4	36.1	8.4	73.7	43.2	1.8	1.8	3.0	1.0	21.0	
103-4	42.7	28.2	42.7	9.9	99.1	54.0	2.0	2.0	3.0	1.7	24.0	
107-4	51.9	35.1	51.9	15.8	124.5	66.0	3.1	3.1	3.0	1.7	40.6	
118-4	66.0	44.4	66.0	20.3	160.5	91.4	3.8	3.8	3.0	2.0	48.3	

All dimensions in mm. Subject to technical changes.

For Material / Adhesive selection and other information please refer to page 10.

Combinations "On request"					
Adhesive	Material				
	B7	G	J	H	L
WM250	√	√	√	√	-
W8	√	√	√	√	-
W24	√	√	√	√	√
W21	√	√	√	√	-
HMT200A	√	√	√	√	-
V9500	√	√	√	√	-
Without Adhesive	√	√	√	√	√

Standard combinations	
Article-No.	Type
410-30480	1030-4-G
410-31001	1031-4-G
410-37001	1037-4-G
410-09001	1009-1-G
401-13480	113-4-G
401-04024	104-4-G
401-05034	105-4-G
401-06036	106-4-G
401-01037	101-4-G
401-02031	102-4-G
401-03041	103-4-G
401-07030	107-4-G
401-18018	118-4-B7