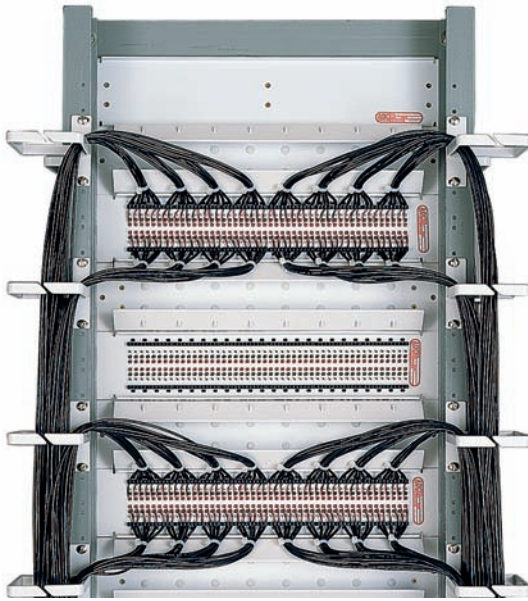




# ICON® Rack-Mount System

Broadcast Products

3 / 0 6 • 1 0 2 1 1 7 A E



I-96 System  
(Rear View)

The ICON® I-96 high-density rack-mount audio cable management system installs in a standard 19-inch (48 cm) EIA equipment rack and is engineered for easy access to front and rear connections. The rack-mounted QCP II or QCP IV punchdown panels are quick to connect, and the feedthrough design allows changing of cross-connection jumpers on the front without disturbing connections on the rear. Multiple I-96 panels can be installed for up to 768 circuits in a fully loaded 7-foot rack.



I-116-D9F  
1 RU Dsub9 Feedthrough Rack-Mount Control Panel Breakout Panel



I-DB25  
2 RU QCP IV/DB-25 Rack-Mount Panel



I-96-E  
2 RU QCP II/EDAC 90-Pin Plug Rack-Mount Panel



I-96-AMP  
2 RU AMP 50-Pin Receptacle Panel (Rear View)

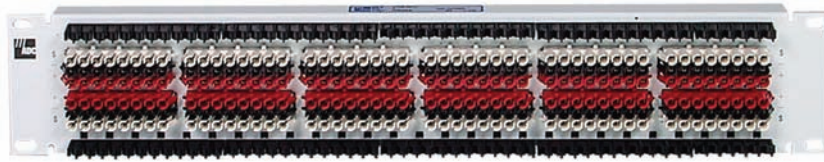


# ICON® Rack-Mount System

## Modular Rack-Mountable Components

The system is built around rack-mountable modular components that you can assemble in different combinations to create the system you require:

- The I-96 QCP II or QCP IV punchdown connection panel terminates and cross-connects 96 balanced audio circuits in 2 RU
- The I-FPB or I-FPD fanning panel dresses and provides strain relief for cables above or below the I-96 panel. Models are available in 1 RU and 2 RU
- Rack-mounted cable troughs and rings are available in various configurations to guide cables in the rack or along rack rails
- I-96 connectors available include QCP II, QCP IV, AMP 50-pin receptacle, and EDAC 90-pin plug



I-96B-MKIV  
2 RU QCP IV Panel



I-VR  
Vertical Ring



I-96B-MKIV  
Rear View Showing Jumpers



I-FPB  
Fanning Panel



I-96S 3 RU QCP II Hinged Termination Panel



I-ET  
Express Trough



I-FL  
Fanning Panel



I-FPD  
Fanning Panel



# ICON® Rack-Mount System

## Ordering Information

Broadcast Products  
3/06 • 102117AE

Description	Ordering Number
<p><b>QCP Panels - EIA Rack-Mount 19"/48 cm</b></p> <p>2 RU panel QCP II cross-connects, 96 balanced audio circuits            2 RU panel QCP IV cross-connects, 96 balanced audio circuits            2 RU QCP II to ELCO/EDAC 3-pin plug, cross-connects, 96 audio circuits            2 RU QCP II to AMP 50-pin receptacle, cross-connects, 96 audio circuits            2 RU QCP II to EDAC 90-pin plug, cross-connects, 96 audio circuits            2 RU QCP II with rear jumpers, cross-connects, 96 audio circuits            2 RU QCP IV with rear jumpers, cross-connects, 96 audio circuits            2 RU QCP IV hinged left, cross-connects, 96 audio circuits, black            3 RU QCP II for 23" rack, cross-connects, 96 audio circuits            1 RU panel Dsub9 receptacles, 1x16            2 RU hinged panel QCP II cross-connects, 96 balanced audio circuits            1 RU panel QCP IV cross-connects, 32 balanced audio circuits            2 RU panel QCP II cross-connects, 48 balanced audio circuits            2 RU panel QCP II to AMP 50-pin receptacle, 52 circuits            1 RU panel QCP II to EDAC 90-pin plug, 52 circuits            1 RU panel QCP IV cross-connects, 16 balanced audio circuit and                1 video bulkhead feedthrough</p>	<p>I-96            I-96-MKIV            I-96-3E            I-96-AMP            I-96-E            I-96B            I-96B-MKIV            I-96S-MKIV-BK            I-96S            I-116-D9F            I-96S-19B            I-32-DES-W            I-48            I-52-AMP            I-52-E            I-CS-V8</p>
<p><b>Fanning Panels - EIA Rack-Mount 19"/48 cm</b></p> <p>2 RU panel with cable rings for routing cables horizontally.            Used with multiple racks with I-FL (listed below) mounted between            racks to route cables vertically and provide additional strain relief</p> <p>1 RU panel with cable rings for routing cables horizontally.            Used with multiple racks with I-FL (listed below) mounted between            racks to route cables vertically and provide additional strain relief</p> <p>2 RU panel with rings for horizontal or vertical cable routing            Includes 2 rings to vertically route cables in the rear; to be used            with a standalone channel rack</p>	<p>I-PPD              I-PPD-1RU              I-FPB</p>
<p><b>Vertical Cable Ring/Spacers</b></p> <p>Functions as a spacer mounted between channel racks and            routes cabling from both the front and the rear of I-FPBs</p> <p>Ring for vertical cable routing; mounts on front or rear rack rails</p>	<p>I-FL              I-VR</p>
<p><b>Express Troughs - EIA Rack-Mount 19"/48 cm</b></p> <p>2 RU express trough for horizontal cable routing between racks            3 RU express trough for horizontal cable routing between racks            4 RU express trough for horizontal cable routing between racks</p>	<p>I-ET-3            I-ET-5            I-ET-7</p>

All products listed above are white unless otherwise noted.