

# Enclosure Options

## Thermal Management Kits for Rear Door

Middle Atlantic Products standard solid rear doors on WRK, MRK and ERK Series enclosures are configurable for achieving optimal active or passive thermal management. Fan, vent and filter kits are available to install after laser knockouts are removed. Fan and vent kits now available for solid split rear doors.



**KO-AWFP2**



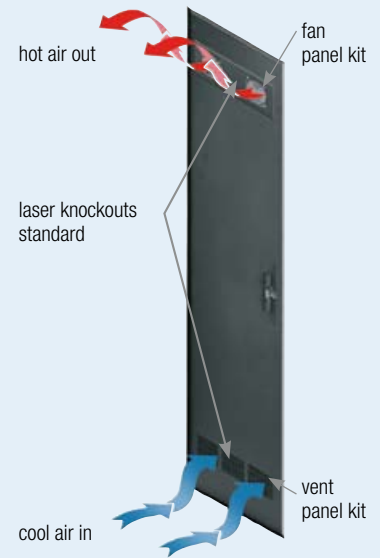
**KO-VT3**



**KO-FILTER3**

WRK, MRK, ERK Standard Solid Rear Doors	
Part #	Description
KO-AWFP2	fan kit with two fans, 190 CFM
KO-VT3	vent panel kit
KO-FILTER3	filter kit
KO-WSB3	blank panel kit

Solid Split Rear Doors	
Part #	Description
KO-CRD-FAN	fan kit with two fans, 190 CFM and two vents
KO-CRD-VT	filter kit



## Optional Doors

Substitute a vented rear door for a solid rear door in selected sizes. Black textured powder coat finish. See web for racks available 'less rear door' (LRD). Fully vented rear doors have 64% open area. Split rear doors with 3 point latch offer 79% open area and require less floor space when accessing rear equipment connections.



Rear Door Part # (Fits WMRK, MRK, VRK, VMRK, WRK Series)				Fits ERK Only	# of Rackspace
Top & Bottom Slot Vented	79% Open Area Split Perf	64% Open Area Perf	Solid Split	Top & Bottom Slot Vented	
-	MW-CLVRD-45	-	MW-CRD-45	-	45
MW-VRD-44	MW-CLVRD-44	MW-LVRD-44	MW-CRD-44	ERK-VRD-44	44
-	MW-CLVRD-42	-	MW-CRD-42	-	42
-	-	MW-LVRD-40	-	ERK-VRD-40	40
-	-	-	-	ERK-VRD-35	35
-	-	-	-	ERK-VRD-27	27
-	MW-CLVRD-24	-	MW-CRD-24	-	24
-	-	-	-	ERK-VRD-21	21
-	-	-	-	ERK-VRD-18	18



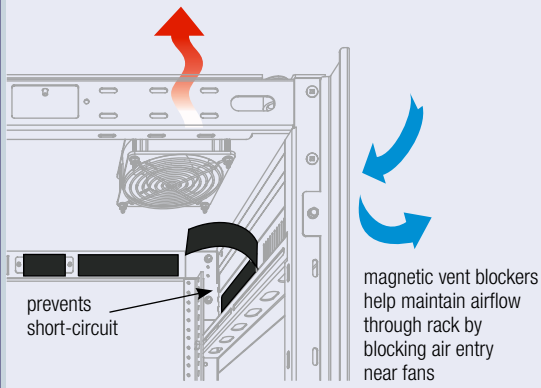
Rear Door Part # (Fits DRK Series)				
Slot Vents Fully Vented	Top & Bottom Slot Vented	64% Open Area Perf	79% Open Area Split Perf	Solid Split
DFVRD-44	DVRD-44	DSVRD-44	DCLVRD-44	DCRD-44



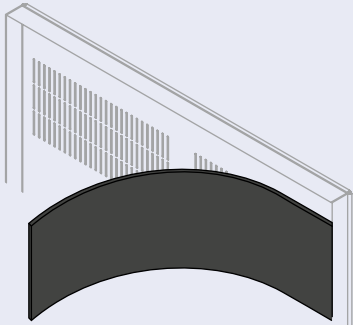


# Vent Blockers and Rear Door Kits

Vent Blockers and Rear Door Kits



**Vent Blockers** mount to the inside of enclosures to block airflow



## Vent Blockers

Vent blockers are used to prevent the recirculation of hot air between top-mount fans and nearby vent openings. Vent blockers should be placed over the enclosure's vents located on the upper front of the enclosure, upper sides, and upper rear door (depending on enclosure).

This will ensure that heated enclosure air will be forced out through the top-mounted exhaust fans instead of re-circulating, keeping equipment cool.

Part #	Used On
VBK-W27-W32	WRK-xx27 & WRK-xx-32
VBK-WSA27	WRK-xxSA-27
VBK-WSA32	WRK-xxSA-32, WR-xx-32*
VBK-E20	ERK-xx20, DWR-xx-26
VBK-E25	ERK-xx25
VBK-SCRK27	SCRK Series
VBK-D17	DWR-xx-17
VBK-SD-22	SR-40-22, DWR-xx-22
VBK-S28	SR-xx-28

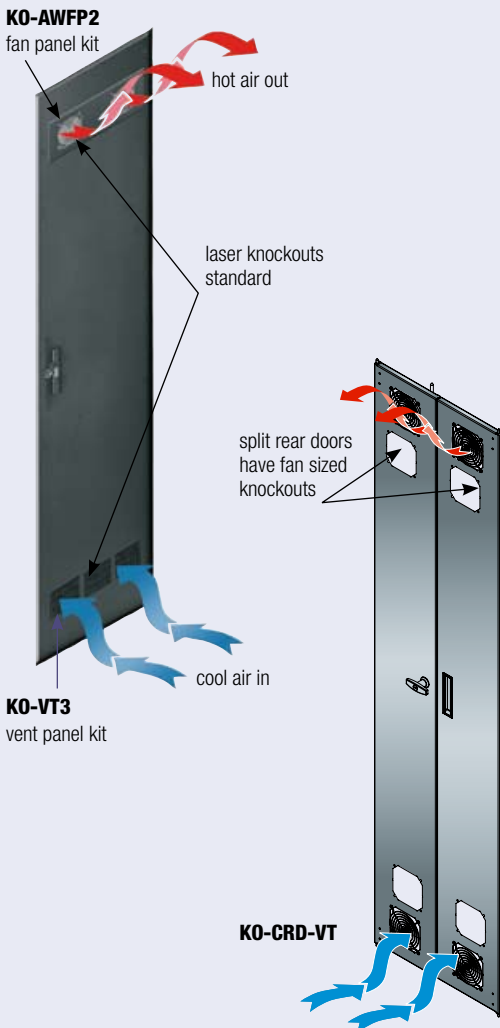
Part #	Used On
VBK-S32	SR-xx-32, DWR-xx-32
VBK-S42	WR-xx-42*
VBK-V	VRK-44-31H/VRK-44-36H
VBK-DRK	DRK Series
VBK-PTRK	PTRK-xx
VBK-PTRK26	PTRK-xx26
VBK-BGR	BGR Series
VBK-BGR-SA	BGR-SA Series

\*When WR is not flush against a wall, block the rear opening with the optional rear access panel, model # WR-RAP-xx

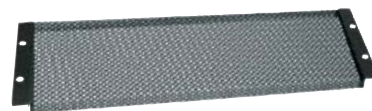
BGR and EGR options are shown on rack series pgs.

## Thermal Management Kits for Rear Door

Middle Atlantic Products standard solid rear doors on WRK, MRK and ERK Series (pg. 35) enclosures are configurable for achieving optimal active or passive thermal management. Fan, vent and filter kits are available to install after laser knockouts are removed from door. Fan and vent kits now available for solid split rear doors.



**KO-AWFP2**



**KO-VT3**



**KO-FILTER3**

Fits WRK, MRK, ERK Standard Solid Rear Doors	
Part #	Description
KO-AWFP2	fan kit with two fans, 190 CFM
KO-VT3	vent panel kit
KO-FILTER3	filter kit
KO-WSB3	blank panel kit

Fits Solid Split Rear Doors	
Part #	Description
KO-CRD-FAN	fan kit with two fans, 190 CFM and two vents
KO-CRD-VT	filter kit

