



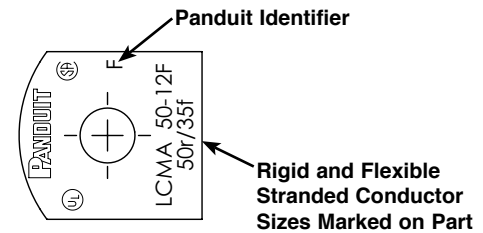
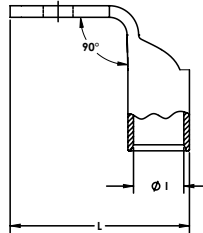
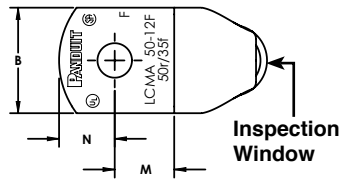
Rigid and Flexible Stranded Metric Conductor, One-Hole, Standard Barrel with Window Lug, 90° Angle



For use with Class 2R Rigid Strand and Flexible Strand Class 5F and 6F Copper Conductors

Type LCMA-F

- Inspection window to visually assure full conductor insertion
- Tin-plated to inhibit corrosion
- UL Listed and CSA Certified to 35 kV** and temperature rated to 90°C when crimped with Panduit tools and dies
- Approved for Marine use by American Bureau of Shipping
- Class 2r, Class 5f and Class 6f wire sizes and stud hole size marked on connector for selection and installation
- Rounded tongue for use in tight spaces
- Internally beveled wire entry for fast and easy installation
- Meets EN61238-1:2003/IEC 61238-1-2003 Class B for 4mm²-240mm² Class 2r wire sizes
- CE compliant sizes 4mm²-240mm² Class 2r wire sizes



Part Number	Copper Conductor Size Class 2r (mm ²)	Copper Conductor Size class 5f/6f ^A (mm ²)	Stud Hole Size (mm)	Figure Dimensions					Std. Pkg. Qty.
				ØI	B	M	N	L	
LCMA10-5F-C	10	—	M5	4.5	11	9.8	6	24.5	100
LCMA10-6F-C	10	—	M6	4.5	11	9.8	6	24.5	100
LCMA10-8F-C	10	—	M8	4.5	13	8.5	8	25.2	100
LCMA10-10F-C	10	—	M10	4.4	14.5	8.5	8	26.2	100
LCMA16-5F-C	16	10	M5	5.5	13	10.3	6.5	26.5	100
LCMA16-6F-C	16	10	M6	5.5	13	10.3	6.5	26.5	100
LCMA16-8F-C	16	10	M8	5.5	13	10.3	6.5	26.5	100
LCMA16-10F-C	16	10	M10	5.5	15	10.2	8	27.9	100
LCMA25-6F-C	25	16	M6	6.9	14	10	8	29.9	100
LCMA25-8F-C	25	16	M8	6.9	15.5	10	8	29.3	100
LCMA25-10F-C	25	16	M10	6.9	15.5	10	8	29.9	100
LCMA35-6F-C	35	25	M6	8.2	15.5	12.3	8.5	34.7	100
LCMA35-8F-C	35	25	M8	8.2	15.5	12.3	8.5	34.7	100
LCMA35-10F-C	35	25	M10	8.2	15.5	12.3	8.5	34.7	100
LCMA35-12F-C	35	25	M12	8.2	21.5	14.5	11.5	40	100
LCMA50-6F-L	50	35	M6	9.8	18	11.5	10	38.4	50
LCMA50-8F-L	50	35	M8	9.8	18	11.5	10	38.4	50
LCMA50-10F-L	50	35	M10	9.8	18	11.5	10	38.4	50
LCMA50-12F-L	50	35	M12	9.8	23	14	11	41.9	50
LCMA70-6F-L	70	50	M6	11.5	20.8	14.5	11.5	42.3	50
LCMA70-8F-L	70	50	M8	11.5	20.8	14.5	11.5	42.3	50
LCMA70-10F-L	70	50	M10	11.5	20.8	14.5	11.5	42.3	50
LCMA70-12F-L	70	50	M12	11.5	20.8	14.5	11.5	42.3	50
LCMA95-8F-L	95	70	M8	13.5	24.5	15	13.5	50.1	50
LCMA95-10F-L	95	70	M10	13.5	24.5	15	13.5	50.1	50
LCMA95-12F-L	95	70	M12	13.5	24.5	15	13.5	50.1	50
LCMA95-16F-L	95	70	M16	13.5	24.5	15	13.5	50.1	50

Visit www.panduit.com/tools for tool and die information.

^AClass 5f conductor only.

**Consult cable manufacturer for voltage stress relief instructions with applications greater than 2000 V.

^ANot CE compliant and not tested to EN 61238-1:2003/IEC 61238-1:2003 for terminations with metric Class 5f or Class 6f flexible stranded conductor.

Continues on next page


**Rigid and Flexible Stranded Metric Conductor, One-Hole,
Standard Barrel with Window Lug, 90° Angle (continued)**

Part Number	Copper Conductor Size Class 2r (mm ²)	Copper Conductor Size class 5f/6f [^] (mm ²)	Stud Hole Size (mm)	Figure Dimensions					Std. Pkg. Qty.
				ØI	B	M	N	L	
LCMA120-8F-L	120	95	M8	15.2	27.5	15.5	14.5	54.2	50
LCMA120-10F-L	120	95	M10	15.2	27.5	15.5	14.5	54.2	50
LCMA120-12F-L	120	95	M12	15.2	27.5	15.5	14.5	54.2	50
LCMA120-16F-L	120	95	M16	15.2	27.5	15.5	14.5	54.2	50
LCMA150-8F-X	150	120	M8	16.5	30.5	18	16.5	60.5	10
LCMA150-10F-X	150	120	M10	16.5	30.5	18	16.5	60.5	10
LCMA150-12F-X	150	120	M12	16.5	30.5	18	16.5	60.5	10
LCMA150-16F-X	150	120	M16	16.5	30.5	18	16.5	60.5	10
LCMA150-20F-X	150	120	M20	16.5	30.5	22	16.5	64.5	10
LCMA185-10F-X	185	150	M10	18.6	33.5	16.5	17.5	62	10
LCMA185-12F-X	185	150	M12	18.6	33.5	16.5	17.5	62	10
LCMA185-16F-X	185	150	M16	18.6	33.5	18.5	17.5	64	10
LCMA185-20F-X	185	150	M20	18.6	33.5	21	17.5	66.5	10
LCMA240-10F-X	240	185	M10	20.8	37.5	21	19.5	71.5	10
LCMA240-12F-X	240	185	M12	20.8	37.5	21	19.5	71.5	10
LCMA240-16F-X	240	185	M16	20.8	37.5	21	19.5	71.5	10
LCMA240-20F-X	240	185	M20	20.8	37.5	21	19.5	71.5	10
LCMA300-10F-5	300	240	M10	23.5	42.5	22	20	77.3	5
LCMA300-12F-5	300	240	M12	23.5	42.5	22	20	77.3	5
LCMA300-16F-5	300	240	M16	23.5	42.5	22	20	77.3	5
LCMA300-20F-5	300	240	M20	23.5	42.5	22	20	77.3	5
LCMAX300-10F-5 [^]	–	300 [*]	M10	26.2	48	26.5	23.5	88	5
LCMAX300-12F-5 [^]	–	300 [*]	M12	26.2	48	26.5	23.5	88	5
LCMAX300-16F-5 [^]	–	300 [*]	M16	26.2	48	26.5	23.5	88	5
LCMAX300-20F-5 [^]	–	300 [*]	M20	26.2	48	26.5	23.5	88	5

Visit www.panduit.com/tools for tool and die information.

^{*}Class 5f conductor only.

^{**}Consult cable manufacturer for voltage stress relief instructions with applications greater than 2000 V.

[^]Not CE compliant and not tested to EN 61238-:2003/IEC 61238-1:2003 for terminations with metric Class 5f or Class 6f flexible stranded conductor.