

4-19

Notionally  
Est # 20105448

Colonial - Lisa

REVISIONS		DATE	APPROVED
A	UPDATED REV STATUS BLOCK (CORRECTED CONTR NO ECN A88L12189)	8-24-15	[Signature]

1. SUGGESTED SOURCE(S) OF SUPPLY - SEE TABLE I
- 1.1 IDENTIFICATION OF THE "SUGGESTED SOURCE(S) OF SUPPLY" HEREON IS NOT TO BE CONSTRUED AS A GUARANTEE OF PRESENT OR CONTINUED AVAILABILITY AS A SOURCE OF SUPPLY FOR THE ITEM(S).
- 1.2 FOR GE ESD-SY ONLY
- 1.2.1 PURCHASE ONLY FROM AN APPROVED VENDOR
- 1.2.2 APPROVAL REQUIRED FROM ESP-SY COMPONENTS ENGINEERING PRIOR TO USE ON NEW DESIGNS.
2. REQUIREMENTS
- 2.1 EACH CONDUCTOR SHALL BE TINNED COPPER, AWG SIZE AND STRANDING SHALL BE IN ACCORDANCE WITH TABLE I. THE CONDUCTORS SHALL BE TYPE C INSULATED WIRES IN ACCORDANCE WITH MIL-W-16876/2 (NAVY), COLOR CODED AS SHOWN IN TABLE II VERSUS THE CONDUCTOR NO.
- 2.2 OVER THE GROUP OF CONDUCTORS SHALL BE A WYLAR TAPE.
- 2.3 OVER THE WYLAR TAPE SHALL BE A TINNED COPPER, BRAIDED SHIELD. ITS MINIMUM COVERAGE SHALL BE 85 PERCENT.
- 2.4 OVER THE SHIELD SHALL BE A POLYURETHANE JACKET HAVING A NOMINAL THICKNESS AS SHOWN IN TABLE I.
- 2.5 FINISHED CABLE SHALL BE FLEXIBLE AND SUITABLE FOR CONTINUOUS USE FROM -55°C TO +80°C.

TABLE I

MANUFACTURER'S ITEM IDENT NO.	NO. OF CONDUCT	AWG NO.	MIN STRANDING	JACKET NOM. THICKNESS	FIG. NO.
1 S10-4618	19	16	19/.0113	.060	1
2 S10-4620	27	16	19/.0113	.060	2
3 S10-4619	7	12	19/.0179	.060	3

SPECIFICATION CONTROL DRAWING

UNLESS OTHERWISE SPECIFIED, DIMENSIONS ARE IN INCHES. TOLERANCES ARE:

2% DECIMALS .020

3% DECIMALS .030

FRACTIONS 1/16

ANGLES ±

DIMENSIONING AND TOLERANCING ARE IN ACCORDANCE WITH ASME Y14.5-1994

CONTR NO	GE 592	DATE	8/24/15
DRAWN BY	[Signature]	CHKD BY	[Signature]
DESIGNED BY	[Signature]	TRNG BY	[Signature]
WRO	[Signature]	REV	2

GENERAL ELECTRIC  
MILWAUKEE, WISCONSIN, U.S.A.

CABLE, POWER, ELECTRICAL

SIZE: 3/4" DIA

REV: C 03538

FORM NO: 77C78109

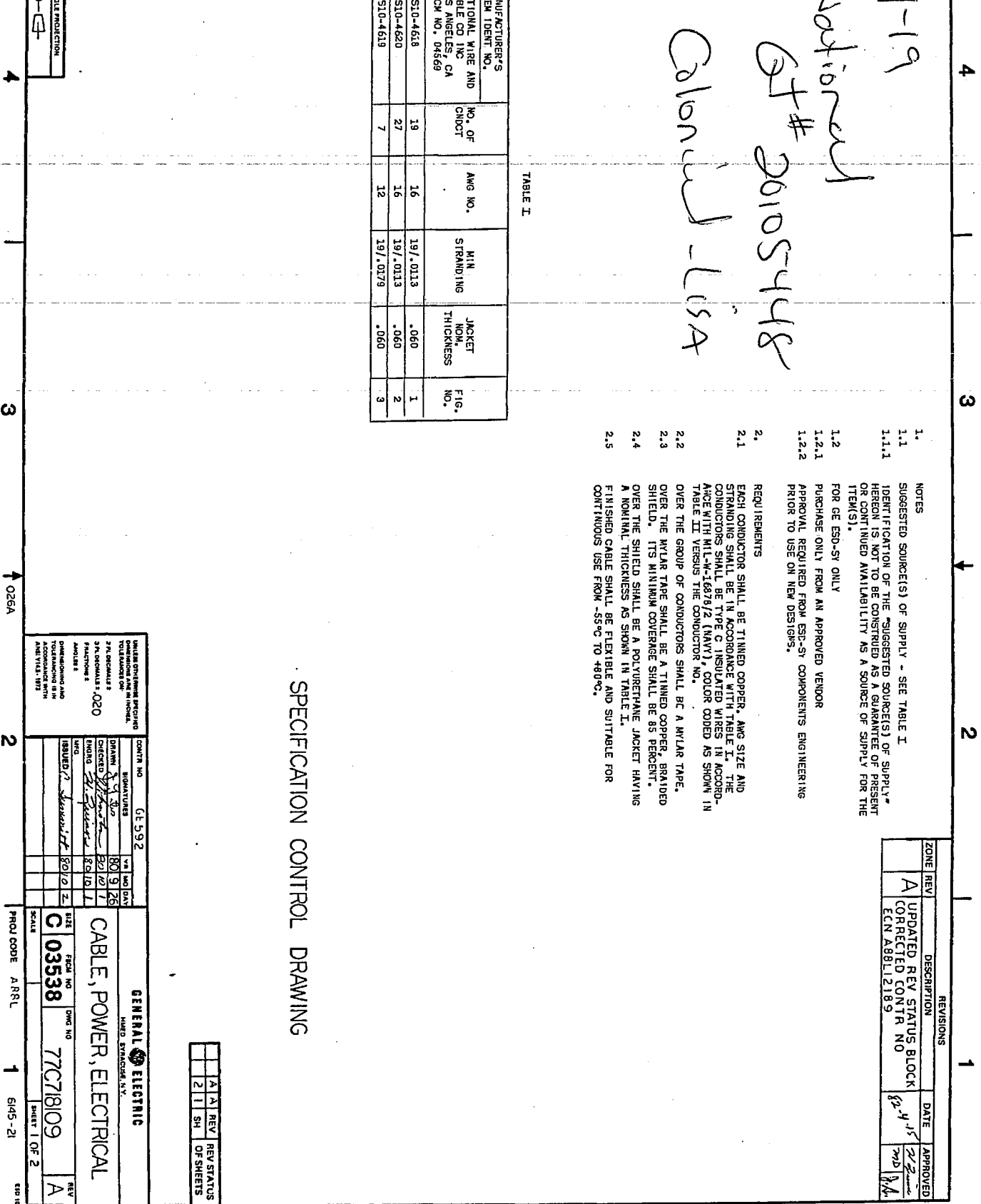
SCALE: AS SHOWN

PROJ CODE: A RRL

SHEET 1 OF 2

REV	DATE	REV STATUS
1		REV
2		SH

4 3 2 1



4 3 2 1

ZONE		REVISIONS		DATE	APPROVED
A	REV	FIG 2	CHNG DIM	6/40	WAS
		ECN	A88L12189		
				6/24/55	W.D. H.

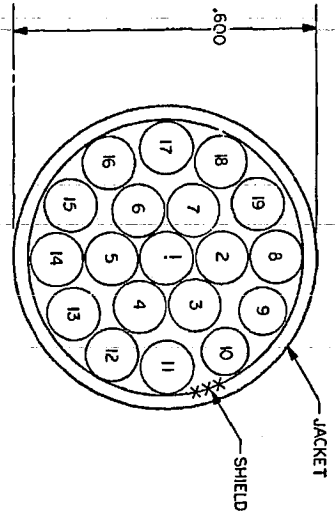


FIGURE 1

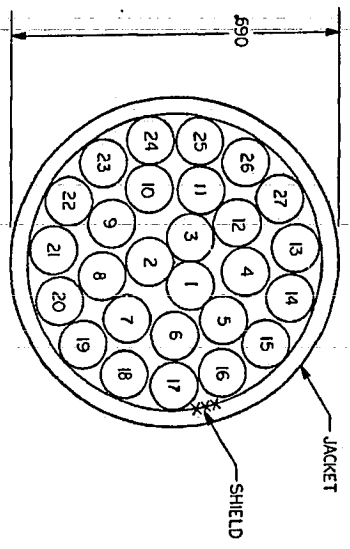


FIGURE 2

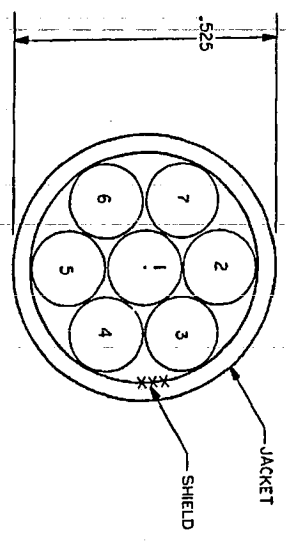


FIGURE 3

TABLE II  
COLOR CODE TABLE

CONDUCTOR NO.	BASE COLOR	WIDE TRACER	NARROW TRACER
1	BLACK	NONE	NONE
2	BROWN		
3	RED		
4	ORANGE		
5	YELLOW		
6	GREEN		
7	BLUE		
8	VIOLET		
9	GRAY		
10	WHITE	NONE	
11		BLACK	
12		BROWN	
13		RED	
14		ORANGE	
15		YELLOW	
16		GREEN	
17		BLUE	
18		VIOLET	
19		GRAY	
20		BLACK	NONE
21		RED	SROWN
22		ORANGE	RED
23		YELLOW	ORANGE
24		GREEN	YELLOW
25		BLUE	GREEN
26		VIOLET	BLUE
27	WHITE	BLACK	VIOLET

**GENERAL ELECTRIC**  
 HED SYRACUSE, N.Y.  
 DRAWN BY: J.S.D.  
 CHECKED BY: J.S.D.  
 DATE: 6/10-70-2  
 SCALE: 5/1  
 SIZE: 1/2" x 3/4"  
 DRAWING NO: C 03538  
 DESIG. NO: 77C718109  
 SHEET: 2  
 REV: A

77C718109 2/A

**Lisa Luft**

**From:** PSTARICH@iewc.com  
**Sent:** Monday, April 19, 2010 2:24 PM  
**To:** Lisa Luft  
**Subject:** Vendor Quote for 600119 Lockheed Martin Shared Service

Sales Quote#: 20105448 Line#: 10 Created By: LLUFT  
Customer: 600119 Lockheed Martin Shared Service  
Cust Quote#: LOCKHEED QUOTE - PAUL  
Customer P/N: 77C718109P002  
Purch Doc#: 6000162389  
Purch Doc Date: 04/19/2010  
Purch Req#: 10638186  
Material: 111111 QQ  
VI RoHS:  
Quantity: 300 FT  
\*\* NC/NR \*\* (Managers Approval Required)  
Price: \$6240.00 per 1,000 FT  
Copper: \$0.0000  
Value: \$1,872.00  
Qty Break: 500.000 Price: 6,240.00  
Qty Break: 1,000.000 Price: 4,740.00  
QQ Desc: 77C718109P002  
Vendor: 10206 NATIONAL WIRE AND CABLE  
Vendor P/N:  
Vendor Min\$Order: \$100.00  
Lead Time: 35 (Calendar Days to IEWC)

\*\*\*\*\*

#####

PLEASE QUOTE  
NATIONAL WIRE  
300'  
77C718109P002  
SPEC TO FOLLOW  
ELECTRICAL POWER CABLE  
04/19/2010 PSTARICH ++++++

500 Ft MIN S10-4620 A Special purpose cable. GE Ref. P/N 77C718109P002 Rev. A.

This cable is non cancelable, non returnable and non RoHS Compliant.

If imposed by purchase order, the price does not include PQR-1029 test. Check with office.

Quoted Lead Time: 35 Calendar Days  
Quoted as FIRM Price.  
\*\*\* Non Cancellable Non Returnable \*\*\*  
Quoted RoHS: NO  
Minimum Order Quantity: 500 FT  
Minimum Order Amount: 100.00 USD  
Ship From City: LOS ANGELES  
Ship From State: CA  
Ship From Country: US

Freight Terms: COLLECT

Supplier Quote Number: 041910-005, V1

Completed on 04/19/2010 by HECTOR SOTO

\*\*\*\*\*