

Rackmount Lighting

Rackmount Lighting



Spec. #
96-01044
for full
product
info.

Retractable LED light provides evenly distributed illumination for component viewing.



PDLT-815RV-RN
shown closed



LT-1RA
shown closed



PDLT-815RV-RN
shown with light
out and lit

Part #	# of circuits	Amperage	Rear Outlets	Surge Protection	Cord Length	Chassis depth	Finish
PDLT-815RV-RN	1	15 Amp	8	Yes, 2-stage with remote notification	9'	13-1/2"	black powder coat
PDLT-815RVA	1	15 Amp	8	Yes	9'	13-1/2"	black brushed and anodized
LT-1R			light only		9'	13-1/2"	black powder coat
LT-1RA			light only		9'	13-1/2"	black brushed and anodized

Gooseneck Rack Lights

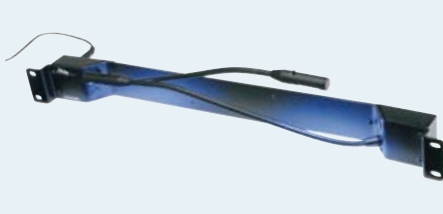
These bright rack lights (187 Lumens*) allow for more rack visibility, and the flexible strong gooseneck lets you direct the light where it is needed most. The reliable, long lasting LEDs have a 20,000 hour bulb life, and these lights include an on/off button for instant control. Available as single light with USB connector or 120V adapter, or as a rackmount panel with dual gooseneck lights. (*Contact us for details.)



LT-GN



LT-GN-PL



LT-GN-PNL



LT-GN-PNL shown in use

Part #	Description	Powered By
LT-GN	gooseneck LED light with USB connector	PDLT-815RVA, PD-915RV-RN, LT-1Rx or any computer w/ standard USB port
LT-GN-PL	gooseneck LED light with 120V adapter	any 120V power outlet, including vertical power strips
LT-GN-PNL	one rackspace rackmount panel with dual gooseneck LED lights	any 120V power outlet, including vertical power strips

Gooseneck Magnetic LED Worklight

This ultra bright worklight illuminates the inside of racks, for easy viewing of equipment and cabling during system installation and servicing. 32 LED lights are positioned at the ideal angle for high visibility and brightness – measured to be 395 Lumens*. Flexible 16" long gooseneck allows light to be directed where it is needed most, and the strong, scratch resistant magnetic base attaches to any steel surface.

(*Contact us for details.)

Part #	Description
LT-GN-WL	magnetic worklight, gooseneck, Includes 32 LED Lights



LT-DEC LED Light



Spec. #
96-01046
for full
product
info.

Designed to fit any standard Decora® device opening, the LT-DEC opens and illuminates when pressed. Running on a standard included 12 VDC power supply, multiple units can be daisy-chained together to use only one outlet with the JDC-12X18 jumper. The jumper reduces the number of power supplies required for an installation and can be used to power the LT-DEC light and TEMP-DEC temperature display, see pg. 121. Pre-configured panels are available with select pre-installed Decora products.

Part #	Description
LT-DEC	retractable LED light
LT2P	one space panel, pre-configured with 2 LT-DEC lights
LT2-T1P	one space panel, pre-configured with 2 LT-DEC lights, 1 TEMP-DEC temperature display
JDC-12X18	18", 12 volt DC jumper wire, 2 pieces



LT-DEC
shown with
light out and lit



LT2P



LT2-T1P





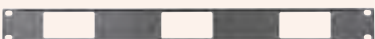
UCP Panels, Rackmount Chassis and Access Panels



DECIP-1X1



DECIP-1X2



DECIP-1X3



DECIP-1X4



16 laser-cut knockouts

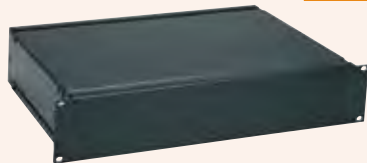
UNI-1

UNI-1-C

incorporates a 2-5/8" shelf with tie-points for cable strain relief

 EIA/TIA Compliant

Spec. # 96-004 for full product info.



CH2

Panels for Decora® Devices

One space panels mount any low-voltage Decora device directly onto the rackrail of a standard 19" enclosure. Panels accommodate as many as four devices including the RPS Series remote power switch, LT-DEC light and the TEMP-DEC temperature display. Pre-configured panels are available with pre-installed Decora mount products for simplified ordering, see pg. 114 for more details. Constructed from one-piece flanged steel (with an open area of 1.62" between flanges), black powder coat finish.

Part #	Description
DECIP-1X1	1-3/4" (1 space) mounts up to 1 Decora devices
DECIP-1X2	1-3/4" (1 space) mounts up to 2 Decora devices
DECIP-1X3	1-3/4" (1 space) mounts up to 3 Decora devices
DECIP-1X4	1-3/4" (1 space) mounts up to 4 Decora devices

Part #	Description
LT2P	pre-configured with 2 LT-DEC lights
LT2P-T1P	pre-configured w/ 2 LT-DEC lights, 1 TEMP-DEC temperature display
T1P	pre-configured w/ 1 TEMP-DEC temperature display

Universal Connector Panel

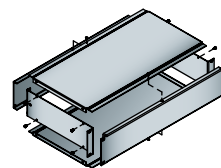
The UNI Series laser-cut connector panels feature knockouts designed to accept a number of connectors, including XLR and Neutrik. The innovative design allows mounting of both male and female connectors to the same holes simply by knocking out the correct pattern. The UNI-1-C incorporates a 2-5/8" strain relief shelf with tie-points for cable management. Made from one-piece flanged steel, black powder coat finish.

Part #	Laser-Cut Knockouts	Racking Height
UNI-1	16	1-3/4" (1 rackspace)
UNI-2	32	3-1/2" (2 rackspace)
UNI-1-C	16	1-3/4" (1 space) - includes cable management

CH Chassis

With its aesthetically-balanced, screwless flush-mounted faceplate, our CH Chassis features a 16-gauge all-steel body finished in a black powder coat. Front and rear panels are made from aluminum for easy machining. The front faceplate additionally features a black brushed and anodized finish, while the rear faceplate is finished in a black powder coat.

Part #	Racking Height	Depth
CH1	1-3/4" (1 rackspace)	10"
CH2	3-1/2" (2 rackspace)	10"
CH3	5-1/4" (3 rackspace)	10"

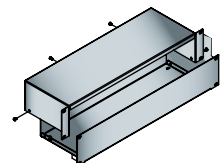


front and rear aluminum panels detach for simplified machining

Econo Chassis

Providing a high quality rack chassis at an affordable price, the EC Series features a quick-to-disassemble two piece design incorporating a 16-gauge steel face, back and bottom, and 20-gauge steel top and sides. Black powder coat finish.

Part #	Racking Height	Depth
EC-1	1-3/4" (1 rackspace)	6"
EC-2	3-1/2" (2 rackspace)	6"
EC-3	5-1/4" (3 rackspace)	6"



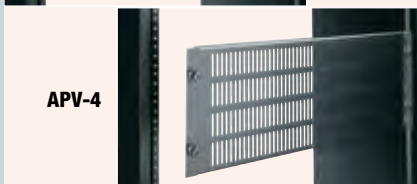
two piece design for easy assembly



EC-2



AP-4



APV-4

Access Panels

Available in 2, 4, and 6 space models, these hinged access panels provide quick passage to rack interiors. Solid and vented panels available. Fabricated from easily machinable 13-gauge black powder coated aluminum, these access panels are perfect for those situations where access to the rear of connector panels is required. Captive 10-32 threaded thumbscrews require no tools to open and will not get lost.

Solid Part #	Vented Part #	Univ Mounting Part #	Racking Height
AP-2	APV-2	APM-2	3-1/2" (2 rackspace)
AP-4	APV-4	APM-4	7" (4 rackspace)
AP-6	APV-6	APM-6	10-1/2" (6 rackspace)

