

# LUTZE Network Connectivity Products

## Industrial Network Connectors

### Application

- Industrial Ethernet connectivity
- Power over Ethernet
- Cat6a

### Characteristics

- IDC - Insulation Displacement Connector
- Cable entry: straight or 90°
- Zinc die-cast housing
- Quick connect technology
- Field wireable
- Easy to install

### Technical Data

Temperature	-40°C - +85°C/ -40°F - +185°F
Protection class	IP20
Transmission frequency	10 Gigabits/s
Rated current	Max 1.0A per contact
Shielding	360°
Contact material	Spring steel 0.8 µm gold-plated
Conductor OD	AWG 27-22
Cable OD	5 – 9 mm, straight 5.5 – 10 mm, 90°
Approvals	UL
Item specific certification:	490128, 490129, 490151 CC-link IE Field

## RJ45 IDC Industrial Connector Cat6a



CC-Link IE  
Field

Part No.	Description	Cable Cross section	Color Code
490128	RJ45 – M 8 pol. Cat6a	Solid 24/1-22/1 Stranded 27/7-22/7	T568B
490129	RJ45 – M 8 pol. Cat6a	Solid 24/1-22/1 Stranded 27/7-22/7	T568A
490138	RJ45 – M 8 pol. Cat6a	Solid 26/1-24/1 Stranded 27/7-24/7	T568B
490151	RJ45 – 4x90° 8 pol. Cat6a	Solid 24/1-22/1 Stranded 27/7-22/7	T568B

### Application

- Industrial Ethernet connectivity

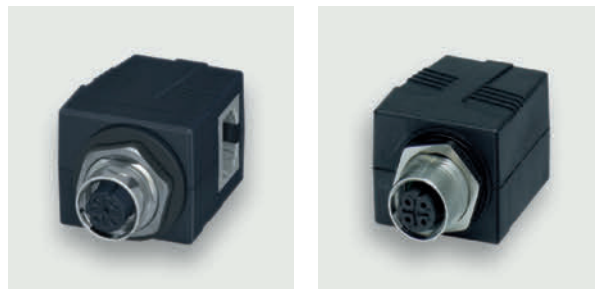
### Characteristics

- 17 mm cut out installation
- Female / Female 4:4 or 8:8
- Easy to install

### Technical Data

Temperature	-25°C - +85°C/ -13°F - +185°F
Protection class	IP 67 in inserted operation
Rated current	Max 1.0A per contact
Shielding	360°
Contact material	gold-plated phosphor bronze
Dimensions	29.5 x 29 mm

## M12 / RJ45 Panel Pass Through



Part No.	Description	No. Poles	Transmission Performance
490105	M12 / RJ45 F/F 90° Cat5	4	100 Megabit/sec
490106	M12 / RJ45 F/F 180° Cat5	4	100 Megabit/sec
490107	M12 / RJ45 F/F 90° Cat5e	8	1 Gigabit/sec
490108	M12 / RJ45 F/F 180° Cat5e	8	1 Gigabit/sec