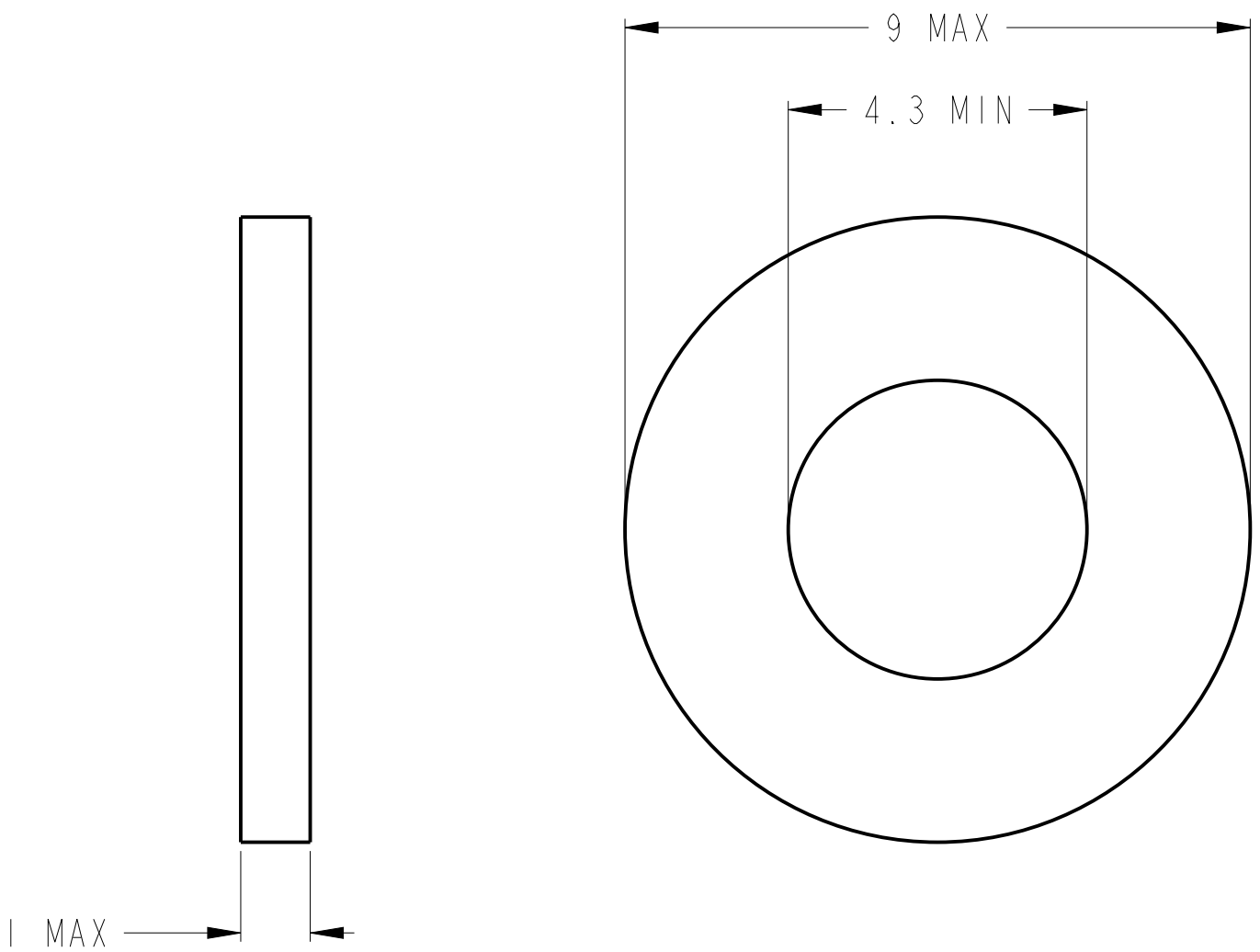
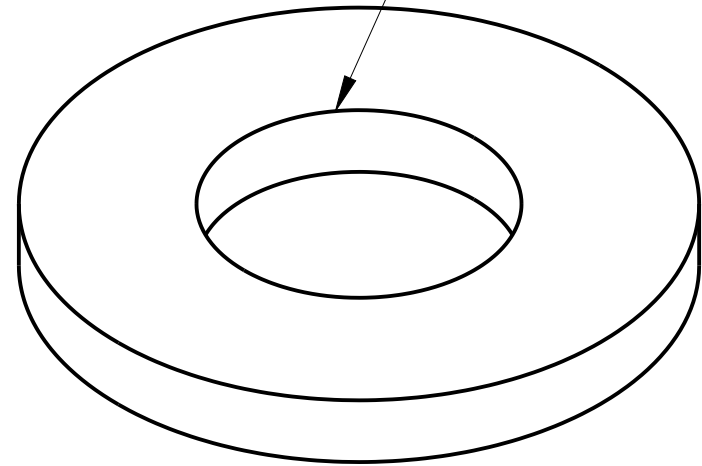


THIS DRAWING CONTAINS INFORMATION PROPRIETARY TO TEKTRONIX, INC., AND WHEN DISTRIBUTED OUTSIDE TEKTRONIX, INC., IS SUPPLIED FOR IDENTIFICATION, ENGINEERING EVALUATION AND/OR INSPECTION PURPOSES ONLY AND MAY NOT BE USED AS A BASIS FOR MANUFACTURE OR SALES OF PRODUCTS WITHOUT WRITTEN PERMISSION FROM TEKTRONIX, INC. IF THIS DRAWING IS FURNISHED UNDER ANY UNITED STATES GOVERNMENT CONTRACT, IT IS FURNISHED AS LIMITED RIGHTS DATA AND SHALL NOT BE EITHER RELEASED OUTSIDE THE GOVERNMENT, OR USED, DUPLICATED, OR DISCLOSED IN WHOLE OR IN PART FOR MANUFACTURE OR PROCUREMENT, WITHOUT THE WRITTEN PERMISSION OF TEKTRONIX, INC., EXCEPT FOR: (1) EMERGENCY REPAIR OR OVERHAUL WORK BY OR FOR THE GOVERNMENT, WHERE THE ITEM OR PROCESS CONCERNED IS NOT OTHERWISE REASONABLY AVAILABLE TO ENABLE TIMELY PERFORMANCE OF THE WORK; OR (2) RELEASE TO A FOREIGN GOVERNMENT AS THE INTERESTS OF THE UNITED STATES MAY REQUIRE; PROVIDED THAT IN EITHER CASE THE RELEASE, USE, DUPLICATION OR DISCLOSURE HEREOF SHALL BE SUBJECT TO THE FOREGOING LIMITATIONS. THE LIMITED RIGHTS CLAIMED HEREIN ARE NOT SUBJECT TO AN EXPIRATION DATE. IF THIS DRAWING IS REPRODUCED IN WHOLE OR IN A PART, THIS ENTIRE LEGEND BLOCK MUST APPEAR ON ALL REPRODUCED COPIES.

REV	REF	DESCRIPTION OF CHANGE	CHK BY	DATE
A		RELEASED FOR PRODUCTION DRAWING UPDATE ONLY, NO GEOMETRY CHANGES FROM REV. 02	MT	18MAR14

FOR M4 SCREW SIZE



3. ALL MATERIALS AND PROCESSES SHALL BE DFE COMPLIANT IN ACCORDANCE WITH TEKTRONIX STANDARD 062-9541-00

2 DIMENSIONS AND APPLIED FINISHES TO COMPLY WITH TEKTRONIX STANDARD 062-9540-00 (AS APPLICABLE)

1. DIMENSIONING AND TOLERANCING PER ASME Y14.5M - 1994

NOTES: UNLESS OTHERWISE SPECIFIED

		TEKTRONIX, INC. P.O. BOX 500 BEAVERTON, OR 97077-0001 USA	
RELEASED FOR PRODUCTION TOOLING	SIGNATURE MATT CLARK	DATE 18MAR14	
DWN MARGIE THOMPSON ENGR MARGIE THOMPSON CHKR MATT CLARK PROD -----		DIMENSIONS ARE IN MILLIMETERS TOLERANCES: UNLESS OTHERWISE SPECIFIED DEC ± --   ANLR ± -- °	
		SCALE NONE	FIRST USED ON PA4000
MATERIAL 2 CARBON STEEL			
FINISH 2 CLEAR ZINC PLATE			
TITLE WASHER, FLAT, M4, ZINC PLATE 68-035			
CODE IDENT NO 80009	SIZE B	PART NUMBER 210-1628-00	SH 1 OF 1
			REV A

DO NOT SCALE DRAWING  
PTC